



GRAND BAY HOTEL

B E I J I N G

北京海湾半山温泉酒店



轻松释然，随心而动

我们酒店的地理位置得天独厚，距离北京市区约68公里，距首都机场仅有45公里，四周环绕着众多风光旖旎的自然景点，驾车20分钟均可轻松抵达：桃园仙谷、黑龙潭、清凉谷、南山滑雪场、君山高尔夫等。

Relax and Reconnect with Your Senses

Ecological Miyun is located in most prominent place in Beijing district, only 68km away from center of Beijing, 45km away from Beijing Capital International Airport. Within 20 minute drive to Tao Yuan Valley, Black Dragon Park, Cool Valley, Nanshan Ski Resort and Junshan driving range.

A photograph of a hillside covered in dense green trees. At the top of the hill, a large sign reads "GRAND BAY HOTEL". The sky is clear and blue. In the foreground, there are blurred green leaves from a tree on the left side.

GRAND BAY HOTEL



酒店周边
Hotel Surrounding



1 健身中心

健身中心位于酒店北翼一层。结束了一天的旅途之后，您将进入我们健身中心，使用先进的有氧训练器材挥洒身心，或是让我们的私人教练对您一对一教学，为健康充电。在这里您也可以冥想、做瑜伽，亦或是练习太极舒缓筋骨。

Fitness Centre is located on the first floor of the hotel's North Wing. State of the art gymnasium loaded with latest fitness equipments, personal trainer, yoga and taichi.

2 网球中心

酒店为您配备了专业的网球中心体育馆，多样化的运动项目选择将为您带来前所未有的极致体验。

Tennis Court
The Hotel provides the professional tennis court for you to enjoy the healthy fitness. And we have the multi-function and diversified sports, which can be chosen by you in our tennis court.

3 儿童俱乐部

位于酒店南翼花园层，海湾儿童俱乐部为您全家共享亲子欢乐带来最完美的服务体验。您与您的孩子可在儿童俱乐部共同享受亲子游戏的乐趣，而多种儿童游戏项目更让您与家人带来最温馨的互动体验。

Kids club
Our kids club is located on the garden floor of the hotel's South Wing; it provides varies of different family games for you and your children to share the fun, which can create the most unforgettable memories for your whole family.

4 宠物中心

无论是喵星人还是汪星人，亦或者是您独一无二的心头好，海湾宠物中心都能给您最心爱的宠物无微不至的关怀。

Pet Club
We will take care of your pet while you stay at the hotel, no matter cats or dogs, especially your most favorite pet friends.

5 中心花园区

中心花园区拥有面积逾700平方米的户外草坪，无论您想在此地筹备时尚盛典还是鸡尾酒会，这里都将是您举办成功活动的理想之地。

Central Garden Area
No matter what kind of activity you want to hold in our hotel, wedding party or cocktail reception, our more than 700 square meters event lawn must make you everything imaged.



密溪(关)路 MIXI (GUAN) ROAD

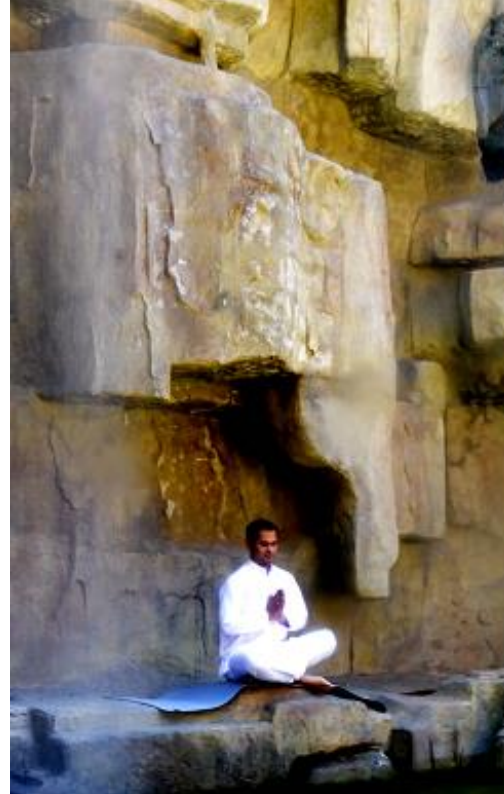
探索密云 Explore Miyun

- 酒店距君山高尔夫俱乐部约4公里
Jun Shan Only 4km from hotel.
- 酒店距桃源仙谷约13.3公里
Taoyuan Fairyland is 13.3km from hotel
- 酒店距南山滑雪场约16.1公里
Nanshan Skiing Resort is 16.1km from hotel
- 酒店距黑龙潭约16.6公里
Heilongtan Park is 16.6 km from hotel
- 酒店距清凉谷约30.8公里
Qinglianggu 30.8 km from hotel
- 酒店距密云蜜蜂大世界约40
The Bee of the World is 40 km from hotel





北京海湾半山温泉酒店
GRAND BAY HOTEL



世界养生酒店联盟
Healing Hotels of the World



世界养生酒店联盟 Healing Hotels of the World

北京海湾半山温泉酒店经过世界养生酒店联盟（Healing Hotels of the World，以下简称HHOW）创始人及总裁Anne Biging女士，及Claudia Roth女士严格地评估，荣幸成为了HHOW在中国的第一家白金级成员酒店。

Grand Bay Hotel Beijing assessed by Mrs Anne Biging who is the founder and CEO of Healing Hotel of the world and Mrs. Claudia Roth be very honored to become the first premium member in China





瀑布酒廊
Lobby Bar



瀑布酒廊 Waterfall Lounge

瀑布酒廊位于酒店大堂，共设有52个座位。在这里您可以呷饮一杯，或者与亲朋好友共享下午茶时光。

The Waterfall Lounge is located on the lobby with a total of 52 seats. A creative seasonal cocktail menu is always available and offers a contemporary concept of the afternoon tea.



酒店客房
Guest Room

酒店客房 Guest Room

品质保证

我们329间客房与套房的空间非常宽敞，每间客房均配有TOTO全自动洁身器，热带雨林花洒，以及pad智能控制系统，以及TWG茶叶。宽敞的露台可欣赏迷人的自然美景，呼吸清新的山间空气，使您达到最佳状态。房间内设施配备完善，让您轻松享受休闲时光。

Rest Assured

Each of our 329 guest rooms and suites offer spacious accommodation. Equipped with a TOTO automatic washlet toilet implement, rainforest showers, a personalized Pad control system and TWG tea. The spacious balconies are designed to let you be at your best and feel rejuvenated by the clean mountain air and scenic views. Everything you need for a rejuvenating stay.



酒店客房 Guest Room

- 宽敞阳台
- Pad 智能操作系统
- 欧舒丹沐浴产品
- TOTO全自动马桶
- 贵妃榻可变为加床
- 私汤入室
- 高速无线网络
- 49寸液晶电视

- Expansive balcony
- Pad control system
- L'Occitane shower products
- TOTO automated washlet
- Chaise longue could be metamorphosed into extra bed
- Private Tang Chi
- Wi-Fi access
- 49 inch LCD





餐厅和酒吧
Restaurant & Bar

加·咖啡 Cafe · Plus

加·咖啡西餐厅位于酒店一层，共设有156个座位，餐厅为您提供品种丰盛的中西式自助早、晚餐以及全天的零点服务。

Café·Plus western restaurant located on 1st floor with 156 seats which is provided a variety of Chinese and Western breakfast and dinner buffet, we also offer a whole day a la carte service.



海湾壹品 Grand Elite

海湾壹品中餐位于酒店二层和酒店三层，共设有220个座位，主要经营粤菜、淮扬菜、传统川菜、本地养生菜的综合特色菜系。

The Grand Elite Chinese Restaurant located on hotel 2nd floor and 3rd floor with 220 seats. Focuses on Modern Cantonese, Huaiyang and traditional Sichuan cuisine along with a local healthy preservation of the characteristics of complex.





会议与婚宴 Conference & Wedding

成功活动的保障

Your Guarantee of a Successful Event

您的商务活动和会议具有至关重要的意义，必须确保无任何差错地顺利实施。酒店拥有逾3,000平方米的会议场地包括了一个1,100平方米的大宴会厅、一个500平方米的剧院式场地、一个700平方米的户外草坪和七个多功能厅。

More than 3,000 square meters of function room space. The Grand Ballroom is 1,100 square meters large, 1 theatre with 500 square meters, 1 event lawn with 700 square meters and 7 function rooms and meeting rooms featuring a wide range of high-end communication equipment.





会议设施

1100平方米Indaba会议中心
室外活动空间
多功能厅
投影仪
音像和视频设备
无线网络
会议书写板
LED显示器

Conference facilities

1100 high-tech Indaba Conference Centre
Accompanying outdoor event space
Function room
Multiple room setups available
AV/TV equipment
Wireless internet
Flip charts
LED screen setup available

大宴会厅 Grand BallRoom





多功能厅 Function Room

会议室 Meeting Room

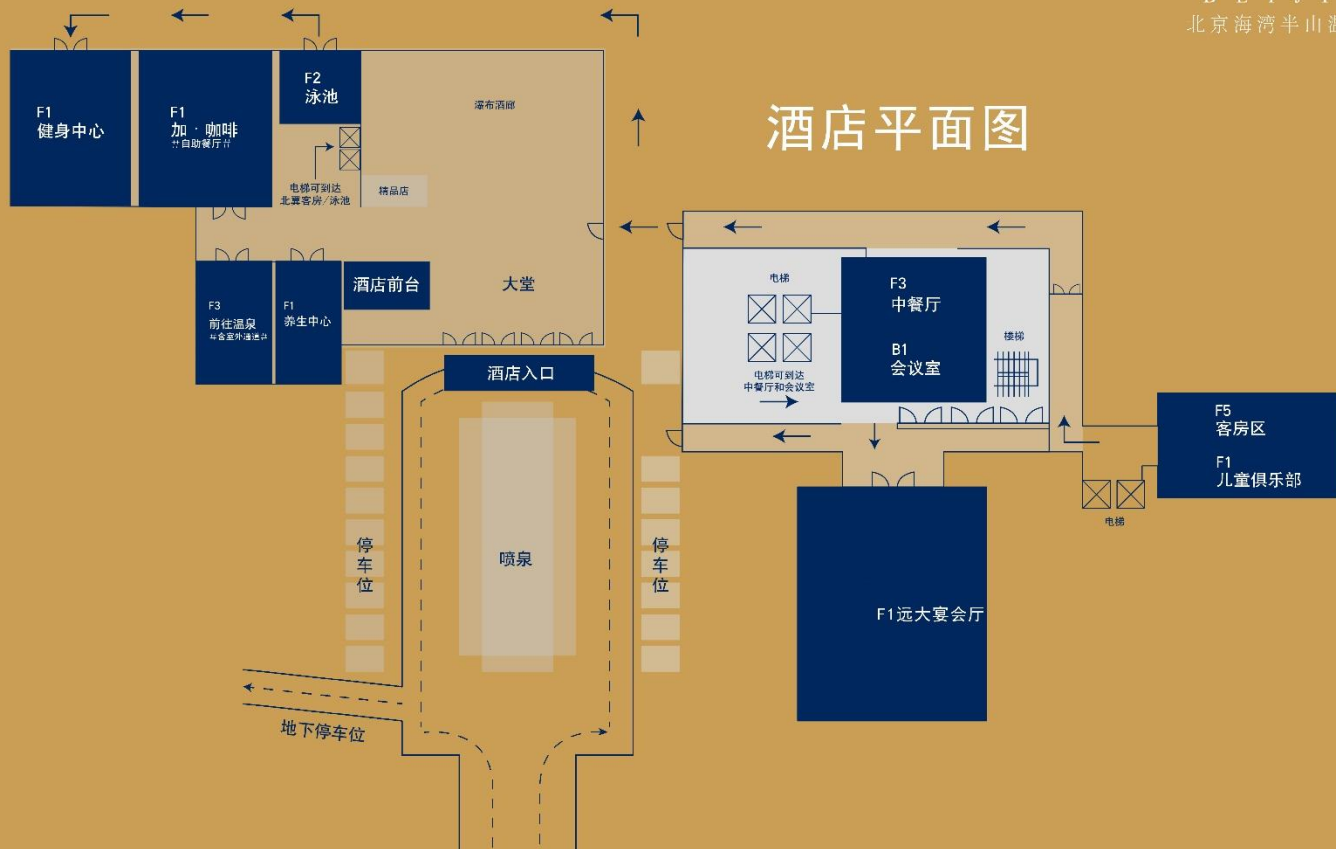


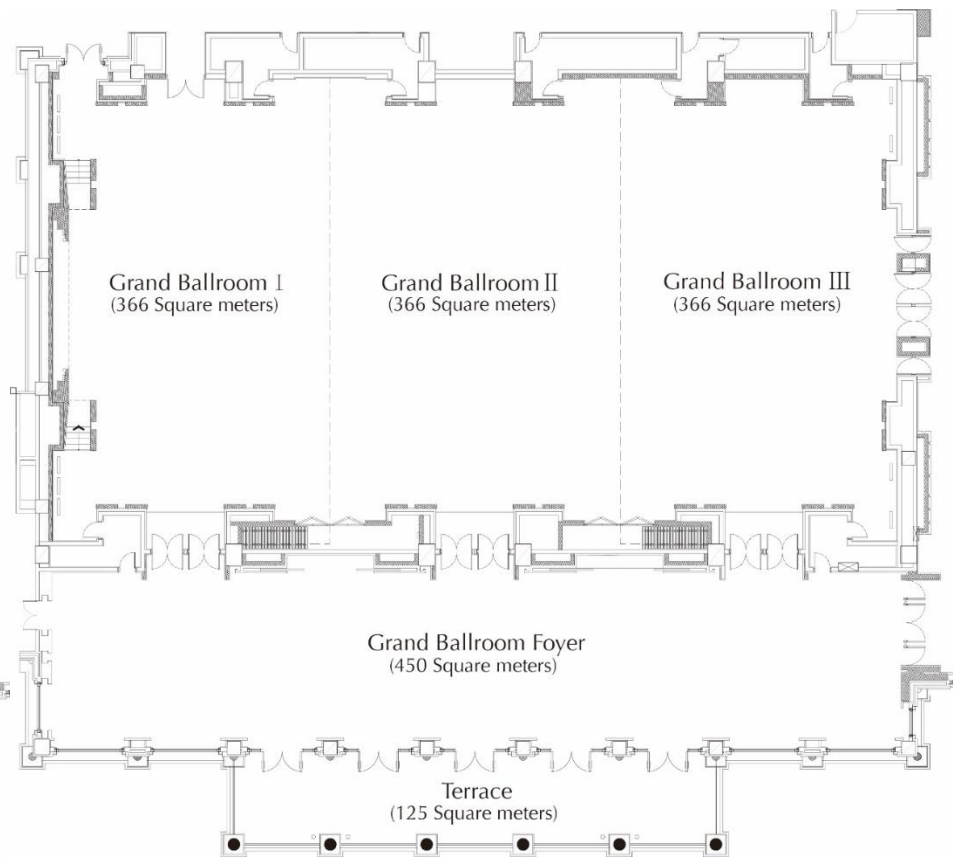
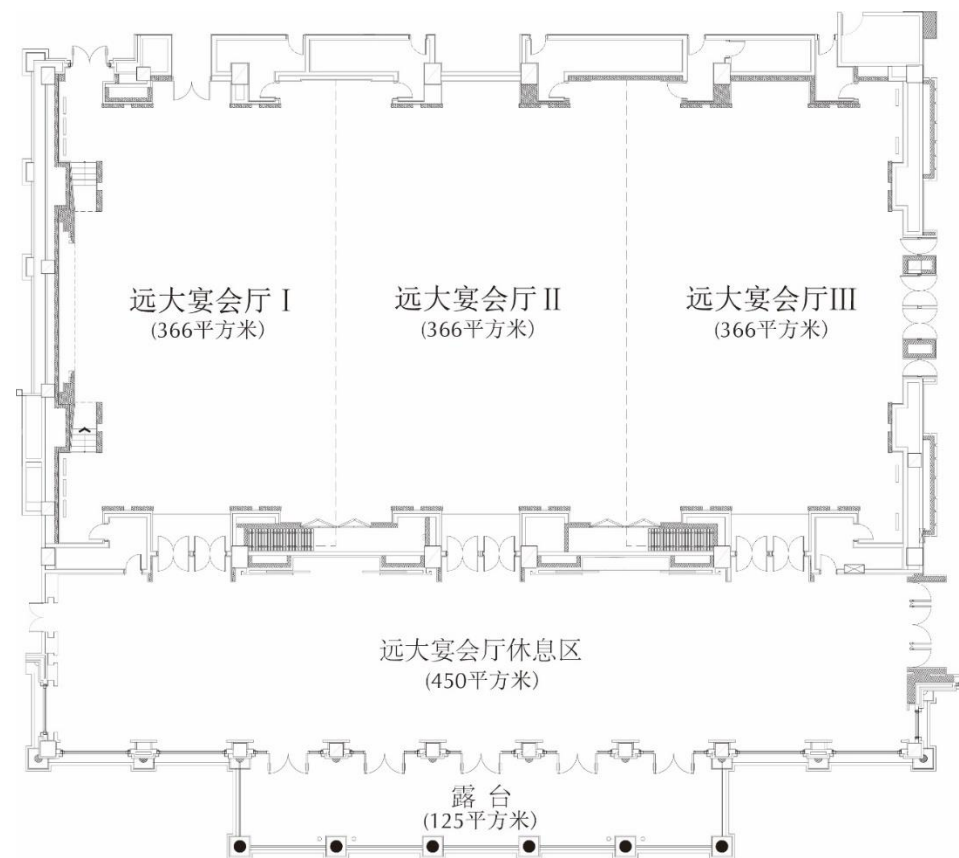
会议室 Meeting Room

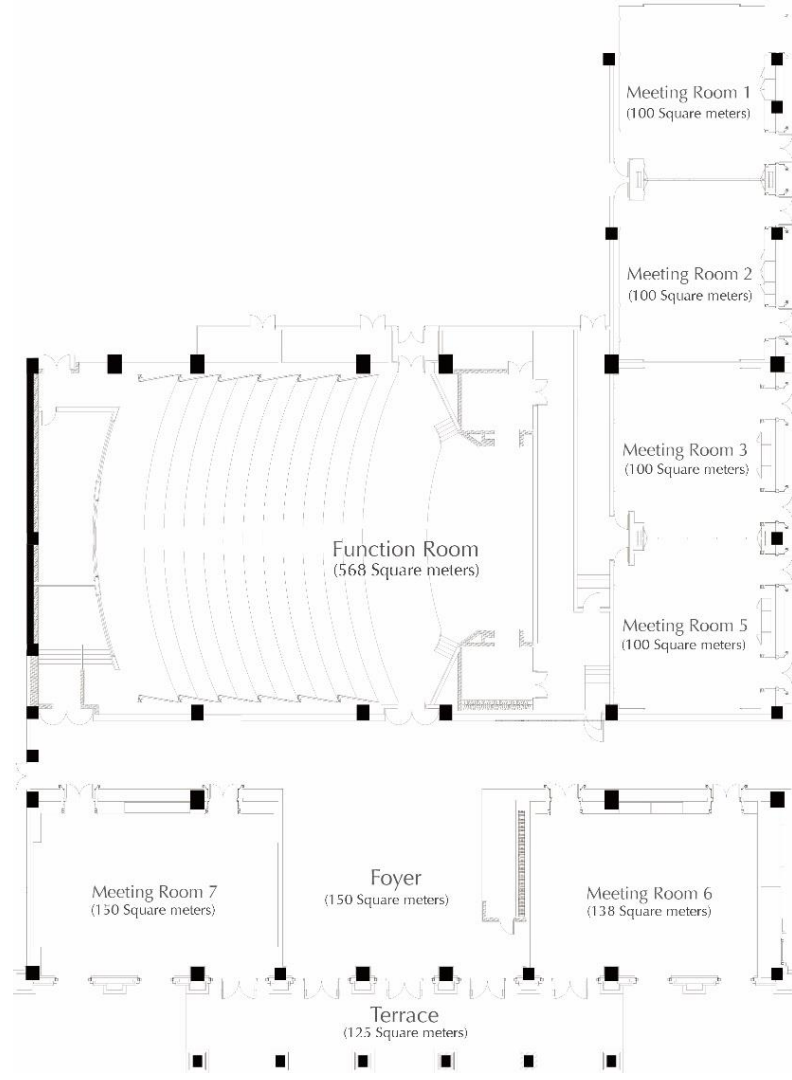
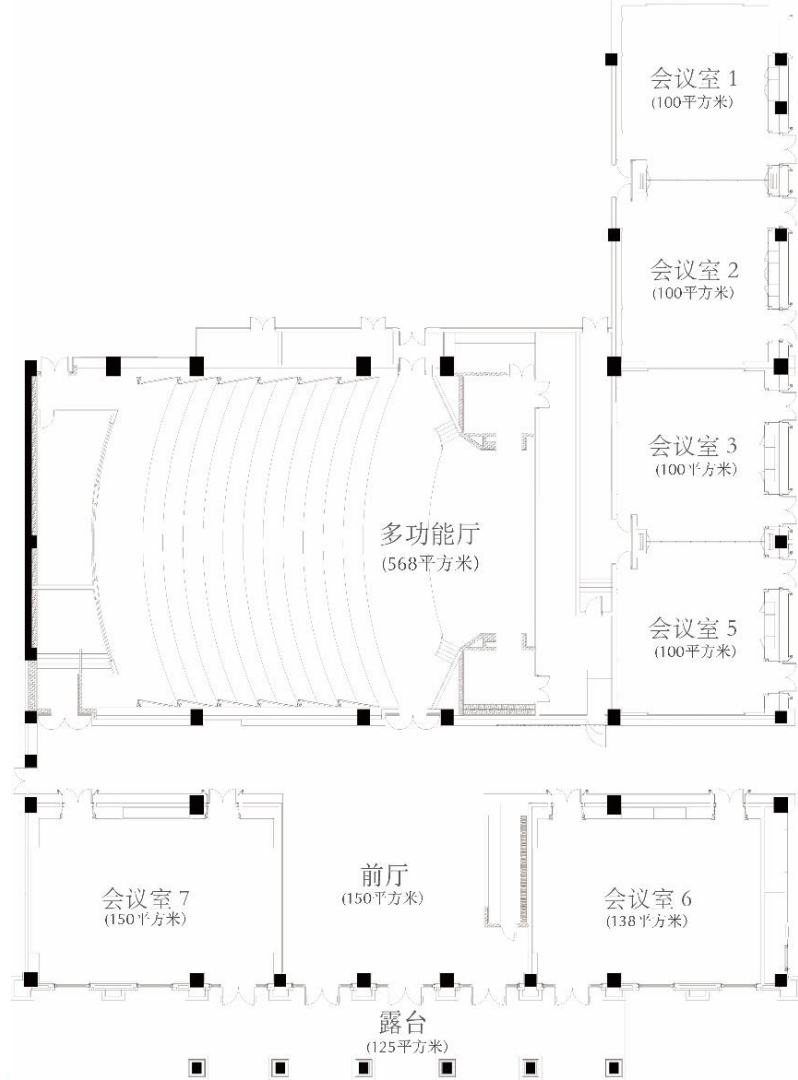


会议室 Meeting Room











养生中心
Healing Centre

养生中心 Healing Centre

在我们的养生中心，您会感受到源自古印度（阿育吠陀）西方和中医疗法的治疗与习俗。所有的护理原料均是经过精心挑选并满足个人的身体类型，且配有高级豪华皮肤护理产品。

You will find healing, rituals derived from ancient Indian(Ayurveda), Western and Chinese therapies. Carefully selected ingredients for your treatment to suit individual body types, sitting side by side with advanced luxury skin care products.



The image shows the interior of a Himalayan salt therapy room. The walls are constructed from large, irregular blocks of pink Himalayan salt, creating a textured, cave-like environment. The lighting is warm and reddish-pink, emanating from the walls and floor. In the foreground, there are two black wicker armchairs facing each other, with a small round table between them holding a white cloth. To the right, there is a wooden fence-like structure. The overall atmosphere is relaxing and therapeutic.

喜马拉雅盐蒸房 理疗砭石房 HIMALAYAN PINK SALT THERAPY

喜马拉雅盐晶石主要成份中含有碘、钾、钙、镁、铁等矿物质84种，是普通矿盐的十多倍。都是对人身有益的元素。这84种元素是2亿8千万年前，首批单细胞生物的组成元素，是地球上生物生命的源头。盐蒸房具有4-14微米的远红外线，可深入人体内部升温，可达到深层排汗的效果。

HIMALAYAN Salt contains 84 kinds of minerals that are good for the body, such as iodine, potassium, calcium, magnesium and iron, which is more than ten times of ordinary mineral salt. These elements were the first of the first single-celled organisms to be the source of life on earth, 280 million years ago. Salt therapy room has 4-14 micron far infrared ray, can heat deep layers of body to achieve deep perspiration effect.



理疗砭石房 BIAN STONE THERAPY

据黄帝内经记载：砭、针、灸、药是中医传统的四大医术；“砭”又称砭术，是中国最早的中医外治法。“砭术”产生于中国新石器时期，它是针灸、刮痧、推拿、按摩的前身。

According to Tadtional Chinese medicine, any disease can be caused by the imbalance of human body. Bian Stone therapy is effective in regulating Qi, blood, Yin and Yang; opening collateral channels; dispelling rheumatism and clearing away heat and thus tranquilizing the mind.

祈日式 瑜伽 Yoga Time

活动时间：每日早晨 07:30-08:30

活动地点：瑜伽室

Activity Time: Every Saturday & Sunday

Venue: Yoga Room





四季养生半山汤池 Four Seasons Private Tang Chi in Mountain

春生、夏长、秋收、冬藏。在自然界中，四时气候之异，决定了生命体的不同状态，温泉养生，也因此不同。先人总结为“春日洗浴·升阳固脱；夏日浴泉·暑温可祛；秋日泡泉·肺润肠蠕；冬日洗池·丹田温灼”。因四季有不同景象，即使泡在同一水汤池，也有不同的心情和效果。北京海湾半山温泉酒店致力于给客户完美的泡汤体验，携手300多年历史的雷允上药业集团，独家秘制四季不同药包，以提供最适当季养生效果的功效。



游泳健身 Swimming to Keep Fit

新陈代谢 按摩全身 四季恒温。

Metabolic massage whole body four seasons constant temperature.



体育中心 Sports Center

酒店拥有2000平米独立室内体育场馆，坐落在酒店北侧，可以满足运动爱好者多功能一站式体验。场地包含网球场；篮球场；羽毛球场的多功能可变换的专业场馆，场馆具备高品质中央空调空气净化系统，配有更衣室及淋浴间，为您精心营造更加健康舒适的运动环境及丰富的非凡海湾入住体验。



儿童俱乐部 Kids Club

位于酒店南翼花园层一层，占地1200平米，为您全家共享亲子欢乐带来最完美的服务体验，多种儿童游乐项目有：淘气堡乐园、魔鬼滑梯、无敌蹦床、超大600平米的蓝色海洋球世界、梦想树屋、卡通小车，小小花店、水果超市、智力玩具等.....这里是乐趣缤纷的探险之旅，是孩子们自由主张的个性王国，一系列精彩纷呈、独一无二的游乐设施为孩子们开启一次次趣味十足的冒险之旅。

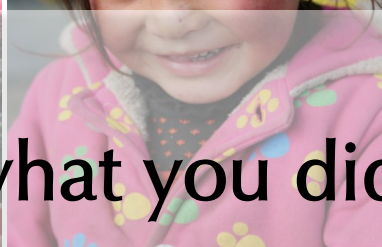
On the first layer in the south garden of the hotel ,cover an area of 1,200 square metres , bring your family the most perfect service experience for sharing parenting joy .There are many kinds of rides for children : naughty castle park , the devil slide , invincible trampoline , a huge blue ocean ball world of 600 square metres , dream tree house , cartoon car , a small flower shop , fruit supermarket , intelligence toys... This is a fun and colorful adventure , also a free kingdom for children . A series of splendid and unique amusement facilities open fun adventures for the children time and time again.

A wide-angle photograph of a modern fitness center. The room features a light-colored wooden floor and a ceiling with recessed lighting and long, horizontal light fixtures. On the left, a row of treadmills is positioned against a wall with large windows that look out onto a blue sky. To the right, there are various exercise machines, including a large piece of equipment with multiple pulleys and weights. The overall atmosphere is clean, bright, and professional.

健身中心 Fitness Center

结束了一天旅途之后，您可进入我们的健身中心，使用先进的有氧训练器材，为健康充电。此外，您也可以大显身手，纵身于室内温水泳池中畅游一番。

Energize yourself with a choice of the latest cardio equipment in our gymnasium. You can also take a refreshing dip or a few energizing laps in our indoor heated pool.



大爱无言
Love be wordless but what you did



曲朗多多小学中秋捐赠
Qu Lang Duoduo Primary School

嫣然天使基金

Smile Angel Foundation



企业责任 Corporate Responsibility

2016年中国远大集团旗下珠海海湾大酒店以及北京密云海湾半山温泉酒店发起“海湾秋月-捐赠曲朗多多学校”的公益项目。无论在北京还是在珠海，“海湾人”都抱着一个共同的信念就是通过大家的努力，帮助更多的孩子继续他们的学业，获得应有的教育。在大家的共同努力下2016年共完成了198,661元，2017年共完成了153,885元的善款捐赠，2018年温暖继续……

China Grand enterprises' Grand Bay View Hotel, Zhuhai and Grand Bay Hotel, Beijing launched a joint public welfare program. Whether Grand Bay Hotel people are in Beijing or in Zhuhai, they hold a common faith - with their efforts, they can help more and more children continue their study and achieve their education they deserved. As a result, every hotel people have contributed to raise a donation of ¥198,661 in 2016.



电子阅读 Press Reader

几千份的报纸和杂志在一个App中呈现。
Thousands of newspapers and magazines in One app.

如何使用本项服务:

- 请连接到酒店的无线网络
- 请登陆 <http://library.perssdisplay.com>

————— 或者 —————

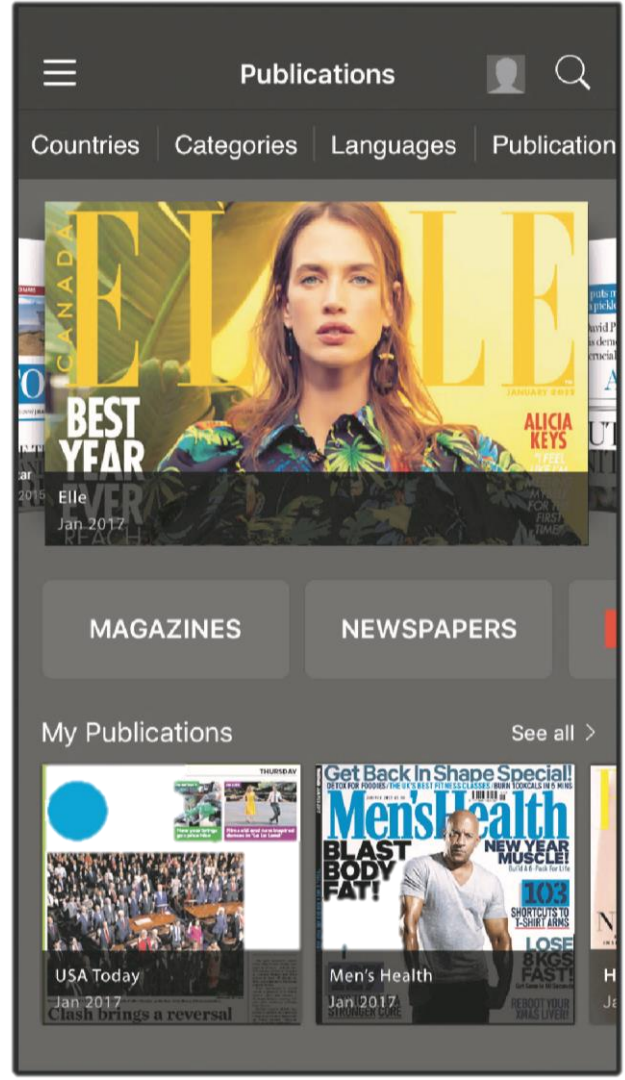
- 从你的应用商店下载Press Reader的应用
- 打开Press Reader的应用，选择您喜欢的读物，享受阅读的乐趣

How to access the services?

- Connect to our Wi-Fi network
- Visit <http://library.perssdisplay.com>

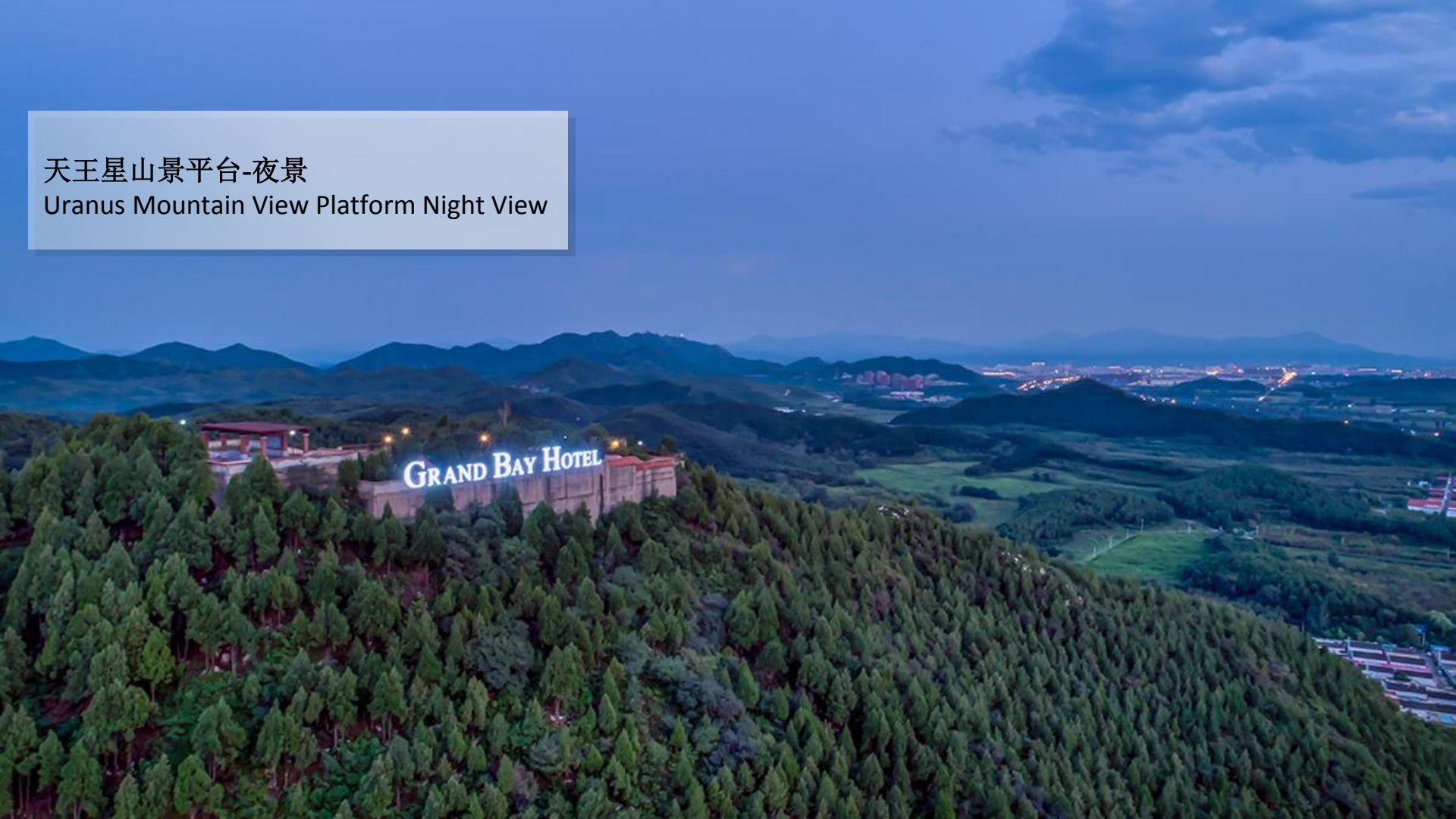
————— OR —————

- Download the Press Reader APP from your app store
- Launch Press Reader. Select your title and enjoy reading



天王星山景平台-夜景

Uranus Mountain View Platform Night View



An aerial night photograph of a large resort complex built into a mountain. The main building is a large, multi-story structure with a blue roof and warm interior lighting. To its left, a winding road or cable car track is illuminated. In the foreground, there are several smaller buildings, including a large residential-style complex with many units, and a circular swimming pool. The surrounding landscape is dark and forested, with distant city lights and mountains visible under a twilight sky.

酒店全景-夜景

Hotel Panorama - Night View

联系我们 | Contact us

中国北京市密云区密溪路36号 邮政编码 101500

No.36 Mixi Road, Miyun Beijing 101500, P.R. China

电话 Tel: 010 6100 6666

传真 Fax: 010 6100 0066

邮箱 Email: reservation.bj@gbvh.com

