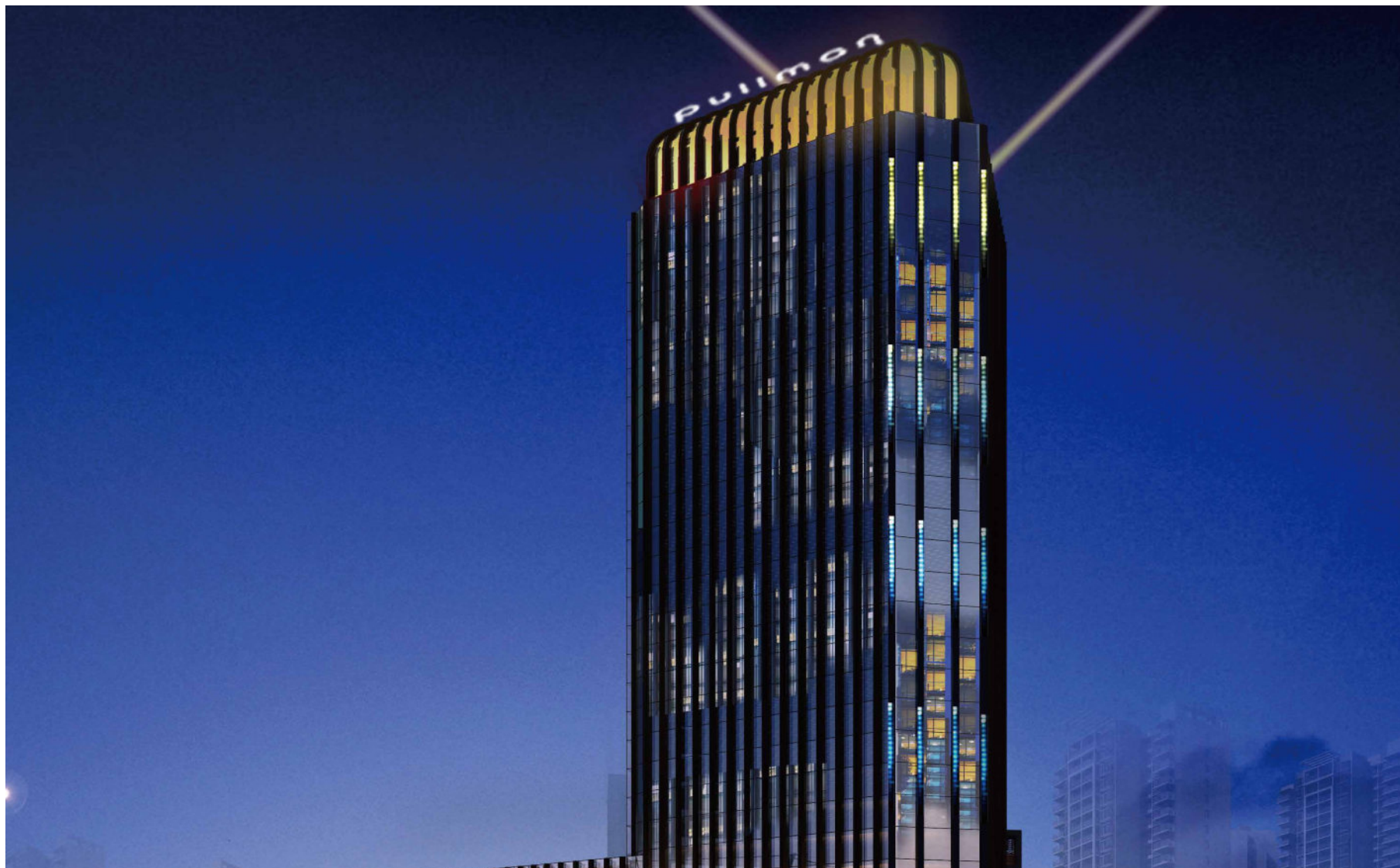


Pullman Guiyang

贵阳铂尔曼大酒店



Our world is your playground
我们的世界就是你的游乐场





Guiyang

贵阳

Guiyang is the capital of Guizhou Province, which is located in the heart of south-east area, is an important eco-leisure resort city.

贵阳，贵州省省会，西南地区重要的中心城市，全国重要的生态休闲度假城市。

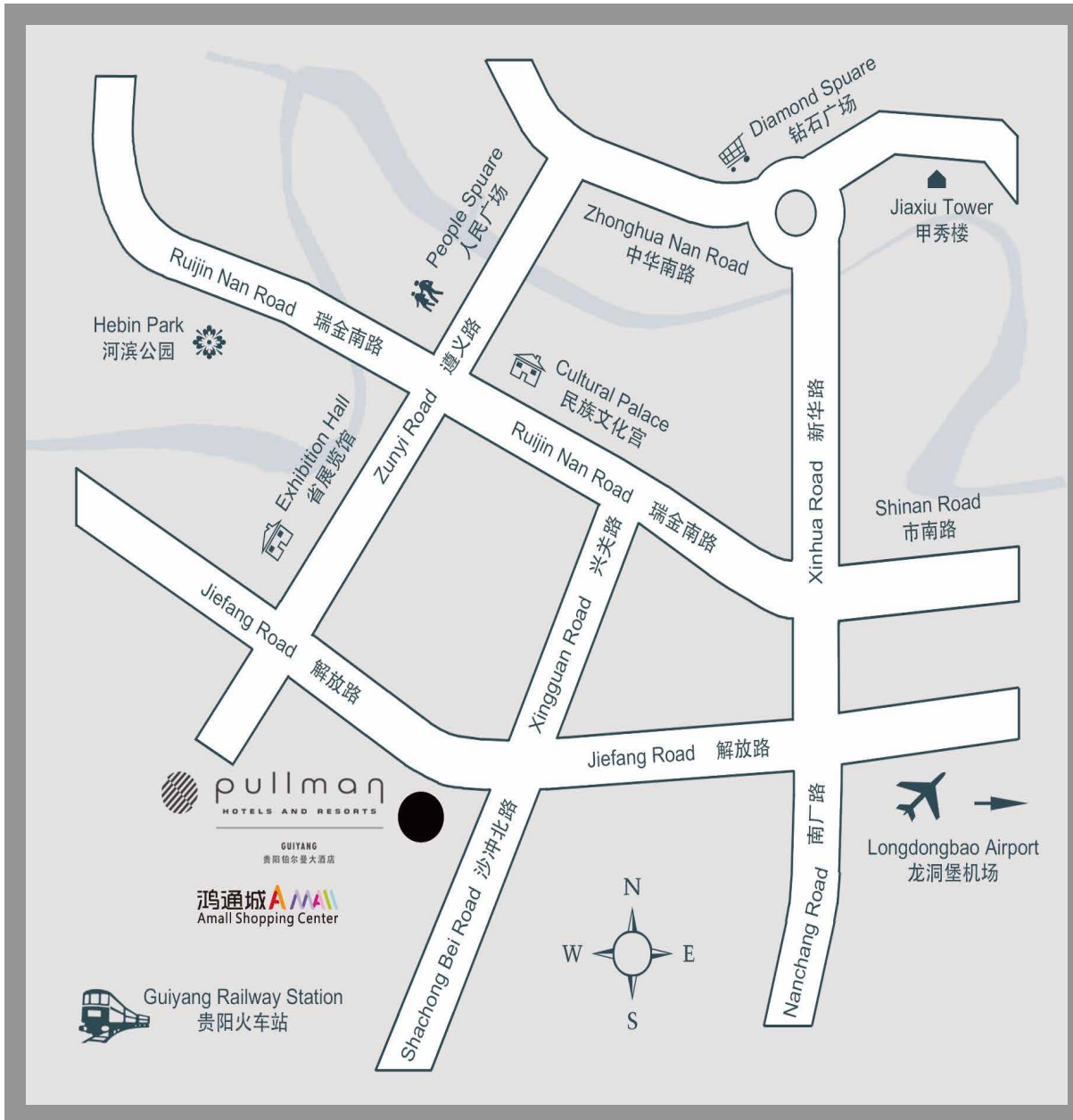
Guiyang is as famous as its beautiful scenery and humanity resource of tourism as the comfortable weather with warm winter and cool summer. The beautiful environment and pleasant climate have earned Guiyang such titles as First National Forest City of China and China's Best City for summer vacation.

贵阳是重要的交通枢纽及商贸旅游服务中心，是自然和旅游资源的富集之地，更以其冬暖夏凉的宜人气候而著称为中国避暑之都。

DIRECTION GUIDE

抵达酒店路线

- From Guiyang Longdongbao International Airport: 12 Km
距离贵阳龙洞堡国际机场: 12公里
- From Guiyang Railway North Station: 13 Km
距离贵阳北站: 13公里
- From Guiyang Railway Station: 0.6 Km
距离贵阳火车站: 0.6公里
- From Guiyang city center: 2 Km
距离贵阳市中心: 2公里
- From Jiaxiu Pavilion: 1.5 Km
距离甲秀楼1.5公里
- From Hebin Park: 1.5 Km
距离河滨公园: 1.5公里
- From Qianling Mountain Park: 7 Km
距离黔灵山公园: 7公里



Tourism and attractions

旅游休闲

■ Jiaxiu Pavilion

甲秀楼

A landmark of Guiyang is Jiaxiu Pavilion, also called the First Scholar's Tower. It is situated on Fuyu Bridge over the Nanming River. Originally built in 1598 in the Ming times, the pavilion is magnificent and unique, and of great culture significance for the city. Jiaxiu Pavilion is a three-storey tower rising 20 meter (66 feet) high. Green tiles, red pillars, engraved windows and white stone parapets make the tower superb and striking. Ascending the tower you can get a good view of the surrounding city scenery.

甲秀楼是贵阳市的标志性建筑，位于贵阳市城南的南明河，是建在河中的巨石上。甲秀楼始建于明，但是后来被毁坏重建，并改名“来凤阁”。在清代重建以后，并恢复甲秀楼的名称。甲秀楼一共有三层，栏杆的材料是白石，甲秀楼整体高20米。甲秀楼面前便是南明河，南明河与其他河流汇为涵碧潭。甲秀楼的侧面是“浮玉桥”，连接着南明河两岸，桥上有一座叫“涵碧亭”的小亭。甲秀楼是全国重点文物保护单位。

■ Qianling Mountain Park

黔灵山公园

It is 5A National Tourism Attractions.

It is one of the biggest inner-city parks in China. It is a natural forest park in Guiyang with high mountains and a crystal clear lake. In addition to such natural scenes as ancient trees, lakes, ponds and lotus, the park boasts many spots of historical interest.

The park is also home to some 400 monkeys, the 3,900-hectar forest park is located in the southeastern part of the city. It is China's earliest and largest forest park ever built in a city. In summer, as the temperature is two degree lower than the other part of the city, the park is an ideal summer resort.

黔灵山公园是国家AAAA级旅游景区，位于贵阳市中心区西北，是一座综合性的游览公园。因素有“黔南第一山”之称的黔灵山而得名，是国内为数不多的大型综合性城市公园之一。以明山、秀水、幽林、古寺、圣泉、灵猴而闻名遐迩。园内峰峦叠翠，古木参天，林木葱茏，古洞清涧，深谷幽潭，景致清远。自古是贵州高原一颗璀璨的明珠。



■ Qingyan Ancient Town

青岩古镇

Qingyan Ancient Town is one of the major four towns in Guizhou Province which has been preserved for more than 620 years. In there, exquisites and well-crafted old building of the Ming and Qing Dynasties were arranged nicely, with the carved beams and painted rafters and overhanging eaves and multi-layered cornices of temples and pagodas overlooking each other. Because of its leisurely antique feelings, Qingyan Ancient Town is regarded as one of the most charming towns in China.

Besides, another amazing features of Qingyan Ancient Town is that there is not only an old temple, but also a cathedral and Christian Church, because of this, it is called “three religions hand in hand.”

青岩古镇，它是贵州四大古镇之一，迄今已有620多年的历史。古镇内设计精巧、工艺精湛的明清建筑交错密布，寺庙、楼阁画栋雕梁、飞鱼重檐相间。悠悠古韵，被誉为中国最具魅力小镇之一。

青岩古镇还有一个令人称奇的特点：镇内不仅有古老的寺庙、还有肃穆的天主教堂和基督教堂，被人称为“三教并存”。



■ Huangguoshu Waterfall

黄果树瀑布

With a height of 77.8m and a width of 101m, Huangguoshu Waterfall is a rare gigantic waterfall in Karst region and one of the most beautiful and splendid well-known waterfalls in the world. It is also the only one in the world which can be observed from six directions: up and down, front and rear, right and left. Huangguoshu Waterfalls the center of this scenic spots, surrounded by 18 other waterfalls, with very different styles and various forms. They are appraised as the biggest waterfall group in the world by the World Guinness Headquarter and are recorded in the Guinness Book of World Records.

黄果树瀑布是国家重点风景名胜区，吉尼斯纪录评选的世界最大瀑布群，首批国家5A级旅游景区。

大瀑布高77.8米，宽101.0米，河水滔滔奔腾而下，宏伟之势，令人感慨水之壮美。黄果树风景区还有大小18个瀑布，庞大的瀑布“家族”，雄、奇、险、秀，风格各异，各有其美。在体会瀑布之气势磅礴之后，在下游7千米处的天星桥则适合漫步细赏，观赏石、树、水的美妙结合，玲珑秀美，大自然的手笔，一方水土的神韵，不可错过。



■ Wanfenglin

万峰林

Welcome to Wanfenglin, be in the company of mountains, waters and fields and enjoy the splendid karst landscapes. In there, a host of activities are offered: hiking, rafting, fishing, mountain climbing, bicycling and rock climbing... also you can just relax yourself, smelling flowers, having fine food and being a sightseer. Whichever you like, you will find the activities of your taste.

万峰林，是国家地质公园和国家AAAA级旅游景区，是中国西南三大喀斯特地貌之一，堪称中国锥状喀斯特博物馆，被誉为“天下奇观”。

登山而览，山峰如春笋般拔地而起，连绵不断，有的像骆驼，有的像猴子，有的像狮子……下瞰平畴，万顷如锦，一湾清流由南而西，有十数布衣村寨依水而立，十足农家光景。

阡陌间，一漏斗地状自成一方“八卦田”，农人依时而稻，各色纷呈，妙且美，仿佛天成镶嵌画。

■ Mount Fanjing

梵净山

Thanks to Buddhism, Mount Fanjing gains its fame from it. Cluster of temples like Four Great Huang An (emperor temples) and Forty-Eight Jiao An (temples situated at the lower parts of Mount Fanjing) scattering in Mount Fanjing areas earn Mount Fanjing the “Buddhist and Taoist rites” status. And among the five famous Buddhist Mountains in China, it is the only Taoist rite of Buddha Maitreya.

位于武陵山腹地的铜仁，有一座千年文化名山“梵净山”。它与山西五台山、浙江普陀山、四川峨眉山、安徽九华山齐名的中国第五大佛教名山。进入梵净山，全境山势雄伟，层峦叠嶂；陡谷深，群峰高耸；溪流纵横，飞瀑悬泻。栖息着黔金丝猴、珙桐、紫薇等珍稀动植物，其主峰“蘑菇石”是著名的一道景观，古老地质形成的特殊地质结构，塑造了它千姿百态、峥嵘奇伟的山岳地貌。



■ A Mall 鸿通城

The A Mall is located in Shachong Road, construction area of the mall reach to 21 thousand meters, it's a big comprehensive Shopping Center which cover shopping, leisure, catering, entertainment and financial etc.

It is deeply popular for the customers and there are more than 300 thousand people get into the mall every day, particularly the numbers of the customers will reach to 700 thousand in the Golden Holiday, it's one of the most popular shopping mall in Guiyang. Inside it, the function of the every floors is very clear, the structure of the goods is very complete. In other words, almost you can find anything you want inside it.

贵阳鸿通城位于沙冲路交汇处，东临沃尔玛、贵州茶城，南面以达高桥路直达贵阳火车站；西靠二七路；北抵解放路与浙江商城、苏宁电器隔路相望。

是贵阳首家全概念购物中心，商场面积达21万平方米，一站式家庭娱乐休闲购物中心。涵盖了诸多新鲜、时尚、科技的元素，将购物、餐饮、休闲、娱乐、文化等业态有机的融合为一体。在这里，你几乎可以买到任意你所想要的东西。



■ No.27 Road Snack Street 二七路小吃街

Guiyang No.27 Snack Street is located in the Jiefang Road and Shachong Road junction, it is a 400 meters commercial walking snack street which cover food, travel, leisure food street. There are more than 80 stores operates various characteristics food from different parts of Guizhou Province and 24 hours open.

贵阳鸿通城二七路小吃街位于贵阳市南明区解放路及沙冲路交界处，集美食、旅游、休闲于一体的美食街。全长近400米的商业步行小吃街，鳞次栉比的排列着80个商铺档口，经营着各种来自贵州各地，极具贵州特色的美食，并且24小时营业。





Rooms

客房

383 well appointed guest rooms
equipped with:
383间设备齐全的客房均配备:

- All 5-star standards
五星级标准配置
- Free Wi-Fi and internet
access
免费无线及网络端口
- Yoga mat
瑜伽垫
- Separate bath and rain
shower
独立淋浴间和浴缸
- iPod player
播放器
- Coffee machine for Executive
Floor
行政楼层咖啡机
- Mini bar
迷你吧

Room types and Inventory

客房种类

383 well-appointed guest rooms
(257 King Bed Rooms、126 Twin Bed Room)

Including:

- 43 Basic Rooms (32m²)
- 240 Deluxe Rooms (42m²)
- 81 Executive Rooms (42m²)
- 13 Deluxe Suites (78m²)
- 5 Executive Suites (78m²)
- 1 Presidential Suites (170m²)

383间设施齐备的客房
(257间大床房、126间双床房)

包括:

- 43间标准客房 (32平方米)
- 240间豪华客房 (42平方米)
- 81间行政客房 (42平方米)
- 13间豪华套房 (78平方米)
- 5个行政套房 (78平方米)
- 1 间总统套房 (170平方米)



Executive Floor

行政楼层

- Express check-in/check-out
快捷入住及退房服务
- Daily Happy Hour at Executive Lounge
行政酒廊每天享受欢乐时光
- Free Wi-Fi and internet access
免费无线及网络端口
- Late check-out until 2:00 pm
延迟退房至下午2点

Executive floor offers a lot of added value benefits, such as breakfast, cocktail happy hour and more.
入住行政楼层, 可在专属的行政酒廊享受自助早餐
精致的鸡尾酒会欢乐时光以及其它尊贵服务。





Lobby Lounge 大堂吧

Business Hours 营业时间: 10:00 – 23:00

Venue 地点: 1st Floor 一楼

It serves different selections of alcohol and soft drinks, cocktails and patisserie.

It is a relaxing place for unwinding or business deals.

乐韵悠扬的大堂吧特备各式香醇咖啡、名品酒水、特色小食以及健康，甘美的果汁和茶！轻松悠闲的美好时光从这里开始！



La Provence 普罗旺斯西餐厅

Business Hour 营业时间:

06:30 - 10:00 (From Monday to Thursday)(周一至周四)自助早餐; 06:30 - 10:30 (Weekend) Buffet breakfast (周末) 自助早餐

11:30 - 14:00 Buffet Lunch自助午餐; 17:30 - 21:30 Buffet Dinner 自助晚餐

Venue地点: 5th Floor 五楼

An all-day dining restaurant serves a sumptuous buffet as well as an international a la carte menu.

优雅舒适的普罗旺斯西餐厅位于酒店五楼，
提供华丽丰盛的自助餐及零点美食。

La Provence
普罗旺斯西餐厅





Outside Garden 户外花园

Venue地点: 5th Floor 五楼

With a grass and a fountain, it is a best choice for afternoon tea,
BBQ, outdoor wedding and party.

位于酒店五楼户外的是市内最大的1000平米空中户外花园, 花园适合下午茶、烧烤、户外婚礼以及派对, 是您绝佳的选择!



Meeting&Banquet Facilities

会议及宴会设施



Meeting&Banquet Facilities

会议及宴会设施

- 840m pillar-free multi-functional Grand Ball-room
840平方米无柱式大宴会厅
- 5 flexible meeting rooms
5个多功能会议室
- Equipped with slide project & overhead projector
幻灯机及高射投影仪
- Wi-Fi access throughout all meeting rooms.
无线宽带网络覆盖所有会议场所
- A range of innovative coffee breaks and "chill-out" spaces.
多套铂尔曼“创意茶歇”及“休憩空间”
- Professional Event Manager is ready to handle every details with creativity and precision.
专业会务经理为您量身定制富有创意的会议策划及周密细节安排。





840m pillar-free multi-functional Grand Ballroom
840平方米无柱式大宴会厅



Wedding@Pullman 铂尔曼婚礼





准 备 好 了？

很快，您就要说出人生中最重要的YES


我 愿 意！

贵阳铂尔曼大酒店为您的重要时刻带来个性化婚礼定制服务，
专属宴会经理、创新优质的宴会餐饮、
美好的婚礼会场及布置

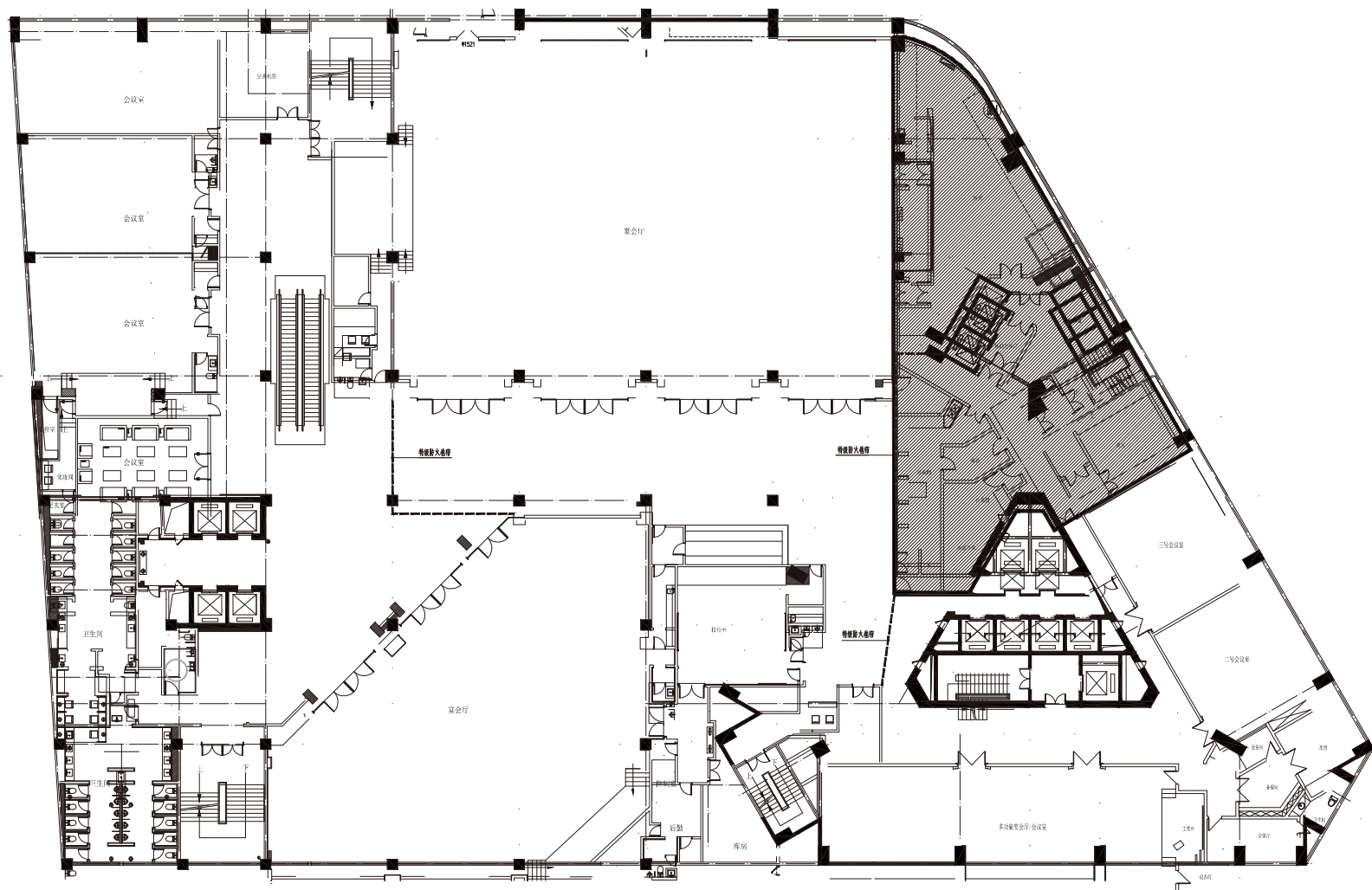


Meeting rooms and capacity services

会议室规格

Category 类型		Area(m ²) 面积	HEIGHT(m) 高度	 BOARDROOM 董事会型	 U-SHAPE U型	 CLASSROOM 课桌型	 THEATRE 剧院型	 COCKTAIL 鸡尾酒会	 BANQUET 宴会式
Grandball Room1	大宴会厅1	420	9.2	/	60	210	350	150	225
Grandball Room2	大宴会厅2	420	9.2	/	60	210	350	150	225
Grandball Room	大宴会厅	840	9.2	/	/	420	700	300	450
Diamond Room	钻石厅	545	4.3	/	/	150~200	400	200	270
Jade Room1	翡翠厅1	120	3.9	30	24	40	70	30	50
Jade Room2	翡翠厅2	95	3.9	30	24	40	70	30	50
Jade Room3	翡翠厅3	110	3.9	30	24	40	70	30	50
Jade Room	翡翠厅	325	3.9	60	60	120	210	60	150
Vip Room	董事厅	70	3.8	20	18	/	/	/	/
Blue Diamond Room	蓝宝石厅	207.2	3.9	60	60	80	130	80	80
Prince Room	王子厅	300	3.9	/	60	100	200	100	200

三楼平面图



Wellbeing 康乐设施



Pullman Guiyang is soothing and relaxing, with an indoor heated swimming pool, fitness center and spa available for You.

Personal service and the highest level of attention and care are extended throughout your stay to assure you have a unique experience.

贵阳铂尔曼大酒店是您休息放松的港湾，您可以敬请使用室内恒温游泳池，健身中心和水疗中心。

在这片城市绿洲享受舒适快乐的生活，恢复精力，重现活力。



Venue地点：4th Floor 四楼

Welcome 恭候您的光临



雅高酒店集团二维码



贵阳铂尔曼大酒店二维码

Fancy us? Follow us!
粉我吧！了解最新动向及活动

PULLMAN GUIYANG
贵阳铂尔曼大酒店

NO.100 JIEFANG ROAD, NANMING DISTRICT-GUIYANG 550007-GUIZHOU PROVINCE P.R.CHINA

中国贵州省贵阳市南明区解放路100号-邮编550007

T.电话 +86 (0) 851 8866 6668 - HOTEL@PULLMAN-GUIYANG.COM

www.pullmanhotels.com.cn - www.accorhotels.com.cn