



LE MERIDIEN EMEI MOUNTAIN RESORT
峨眉山恒邦艾美度假酒店

Le **MERIDIEN**
EMEI MOUNTAIN RESORT
峨眉山恒邦艾美度假酒店

N 29°36' E 103°29'
DESTINATION UNLOCKED
探索世界 揭秘目的地



OVERVIEW

总览

INTRODUCTION

简介

With a compelling location right next to the entrance to Mount Emei Scenic Area, Le Meridien Emei Mountain Resort is the ideal place to unlock this compelling destination. Cultural heritage meets modern hospitality as you discover Emei Mountain. Explore some of the most historical and religious sites through sensorial moments and unexpected experiences. Unlock your destination with authentic and thought-provoking experiences at every turn.

峨眉山恒邦艾美度假酒店位于峨眉山风景区入口，可谓是探索这个非凡目的地的绝佳出发点。开启峨眉山之旅，品味文化遗产的底蕴，感受这里的现代风情与热情好客。探索部分古老的宗教遗迹，唤醒感官，邂逅意想不到的体验。领略目的地处处洋溢着的本土风情，激发无限创意与灵感。



LOCATION

地理位置

1 km from Emeishan Railway Station, 3 minutes' drive.

距峨眉山高铁站1公里，车程约3分钟。

1 km from Emeishan Tourism Passenger Transport Center, 3 minutes' drive.

距离峨眉山旅游客运中心1公里，车程约3分钟。

1.7 kms from the Mount Emei, 5 minutes' drive.

距离峨眉山景区1.7公里，车程约5分钟。

5kms from Emeishan City Center, 10 minutes' drive.

距离峨眉山市中心5公里，车程约10分钟。

60kms from the Leshan Giant Buddha, 30 minutes' drive.

距离乐山大佛45公里，车程约40分钟。

115 kms from Chengdu Shuangliu International Airport, transfer High Speed Rail to Emeishan in Terminal 2, 1 hour drive.

距离成都双流国际机场115公里，可在T2航站楼乘坐高铁前往峨眉山，车程约1小时。



UNIQUE SELLING POINTS

独特卖点

The only five star hotel of international brand in Emeishan area.

峨眉山地区唯一一家国际品牌五星酒店。

Sitting at the foot of Mount Emei, backed on Exiu Lake.
坐拥峨眉山，背靠艾美湖，可直观金顶和四面佛。

338 stylish rooms and suites, area from 50 sqm, twin bed with 1.37m.

338间时尚休闲的客房和套房，房间面积50平米起，双床房均为1.37米宽床。

11 meeting rooms with full facilities suit all kinds of meetings and banquets, one of the largest ballroom is 800 sqms.

11间设施齐全的会议室满足不同类型的会议及宴会需求，其中最大的宴会厅有800平方米。

Inspired dining choices is offered in Latest Recipe, including lakeside BBQ.

新食谱全日餐厅和艾美轩中餐厅提供独具匠心的用餐选择。





GUEST ROOM/SUITE
酒店客房/套房

GUEST ROOM/SUITE

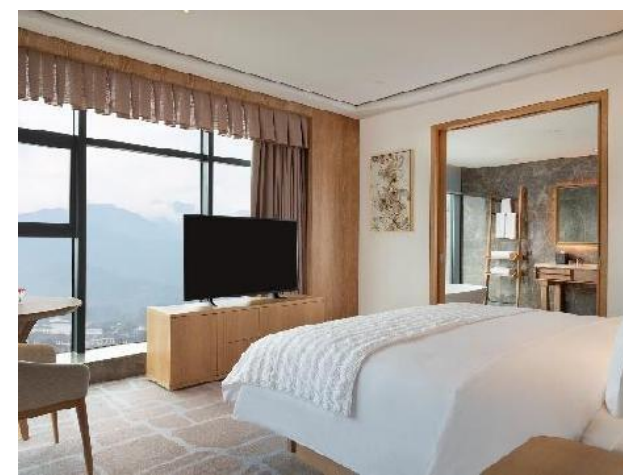
酒店客房/套房



Classic Room
经典客房



Deluxe Suite
豪华套房



Discovery Suite
探索套房



Family Suite
家庭套房



Ambassador Suite
大使套房



Presidential Suite
总统套房

GUEST ROOM/SUITE

酒店客房／套房

Room Type 房型	Quantity 数量	Sqm. 面积
Classic Room 经典园景房	76	50
Deluxe Room 豪华湖景房	146	50
Chic Room 别致山景房	45	50
Family Room 汽车亲子房（猪猪侠主题）	10	50
Discovery Family Room 探索家庭花园房（猪猪侠主题）	28	50
Family Suite 家庭套房（超级飞侠主题）	10	60
Deluxe Suite 豪华套房	8	65
Discovery Suite 探索套房	5	85
Ambassador Suite 大使套房	7	170
Presidential Suite 总统套房	1	450
Accessible Room 残疾人房	2	50
Total 总数	338	N/A

Total Twin-bed rooms: 161 Rooms; Suites: 33 rooms;
双床总数：161间/大床总数：177间（含套房：31间）

FAMILY ROOM

亲子房

Offering different themed of Super Wings and GG Bond family rooms with 3 different room types, the Super Wings room is Loft room, which bring more inspirations to children. GG bond themed room is spacious and comfortable, GG bond car themed room is also equipped with car and Legos, which stimulate children's unlimited creativity.

酒店设有“超级飞侠”和“猪猪侠”两个卡通主题及三种不同房型亲子客房，超级飞侠更是Loft房型，带孩子更多灵感。猪猪侠主题的探索客房宽敞舒适，猪猪侠汽车主题房还配有小汽车及乐高玩具，激发孩子无限创意。





MEETINGS/BANQUET

会议/宴会

INTRODUCTION

简介

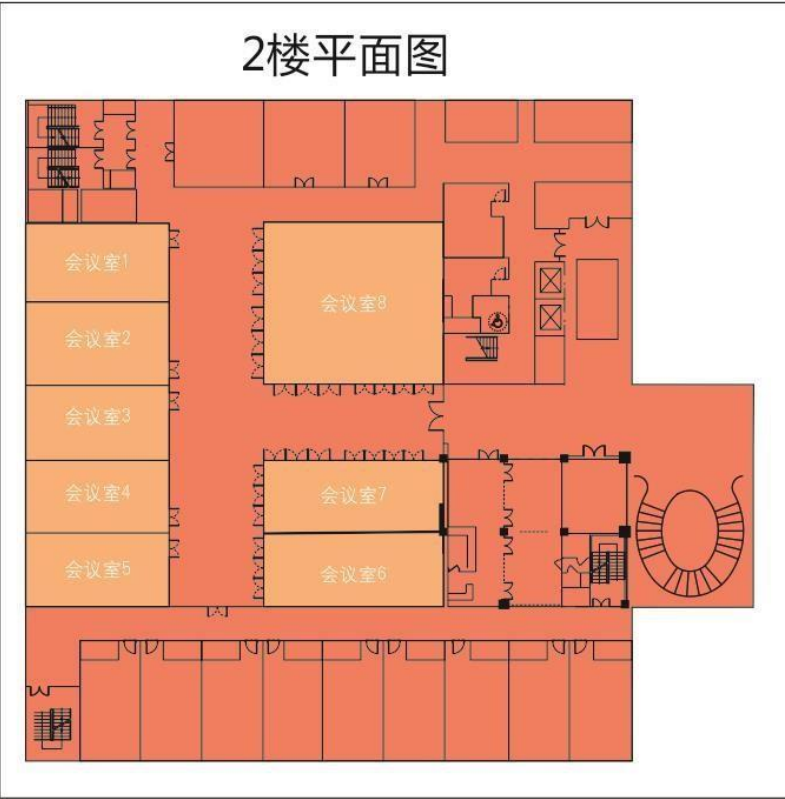
The hotel has 3,600 square meters of flexible event space, including a banquet hall of 800 square meters, a wide lawn of 800 square meters and 10 conference rooms of various sizes, making it an ideal venue for business meetings, social events and wedding banquets. The business center of the hotel is ready to provide a variety of excellent support services for every event, including advanced audio-visual equipment and high-speed Internet access.

酒店共有 3,600 平方米灵活多变的活动空间，设有面积多达800平方米的宴会厅，800 平方米的宽阔草坪以及 11 间规模不一的会议室，是圆满举办商务会议、社交聚会和婚庆宴请的理想场地。酒店的商务中心则随时为您提供各种支持服务，全力为每一场活动提供卓越的服务与先进的技术，包括先进的视听设备和高速网络接入。

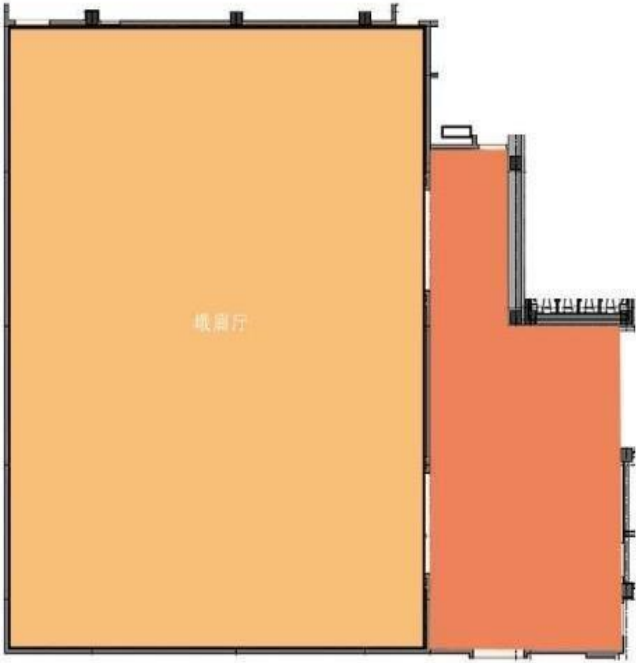
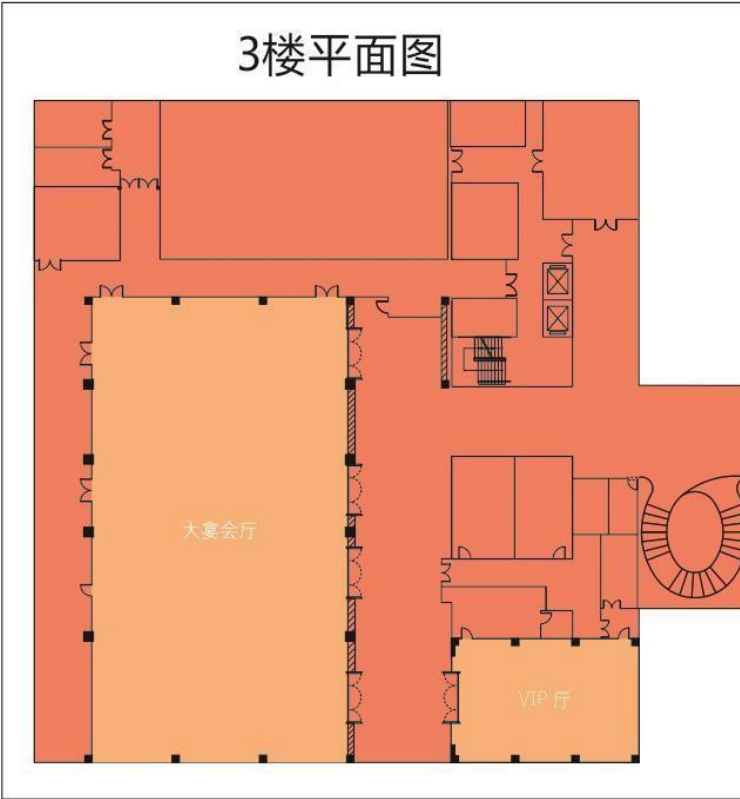


FLOOR PLAN
平面图

2楼平面图



3楼平面图



DETAILED INFORMATION

具体信息

Name of Room 会议室	Dimensions (m) 尺寸 (m)	Height (m) 高度	Sqm. 面积	Theater 剧院式(人)	Classroom 课桌式(人)	U-Shape U型(人)	Banquet 宴会式(人)	Cocktail 鸡尾酒会式(人)	Boardroom 董事会式(人)
Grand Ballroom 大宴会厅	35*21	8	800	700	420	/	450	350	/
Ballroom 1 宴会厅1	17*21	8	400	288	168	/	200	/	/
Ballroom 2 宴会厅2	17*21	8	400	288	192	/	200	/	/
Emei Ballroom 峨眉厅	28*21	4	540	384	240	/	310	/	/
VIP Room 贵宾室	15*9	4	150	120	63	66	80	50	42
Meeting Room 1 会议室1	11*5.5	4	70	49	30	33	30	20	36
Meeting Room 2 会议室2	11*6	4	70	49	30	33	30	20	36
Meeting Room 3 会议室3	11*5	4	70	49	30	33	30	20	36
Meeting Room 4 会议室4	11*5	4	70	49	30	33	30	20	36
Meeting Room 5 会议室5	11*5	4	70	49	30	33	30	20	36
Meeting Room 6 会议室6	14*5	4	100	72	36	39	30	30	42
Meeting Room 7 会议室7	14*5	4	100	72	36	39	30	30	42
Meeting Room 8 会议室8	14*13	4	200	/	/	/	80	80	/
Lawn A A区草坪	/	/	800	200	/	/	/	/	/
Lawn C C区草坪	/	/	800	200	/	/	/	/	/



LOUNGE/RESTAURANT

大堂吧/餐厅

LATITUDE 29

北纬29° 大堂吧

Offering creative cocktails, craft whiskeys, sparkling libations and an extensive wine list, as well as an all-day bar menu, illy espresso and lattes are complemented by local éclair flavors.

提供一系列独具创意的鸡尾酒、手工酿制的威士忌、口感清爽的起泡酒以及种类繁多的葡萄酒，您可在此品尝意利浓缩咖啡和拿铁咖啡，同时享用当地风味的闪电泡芙。

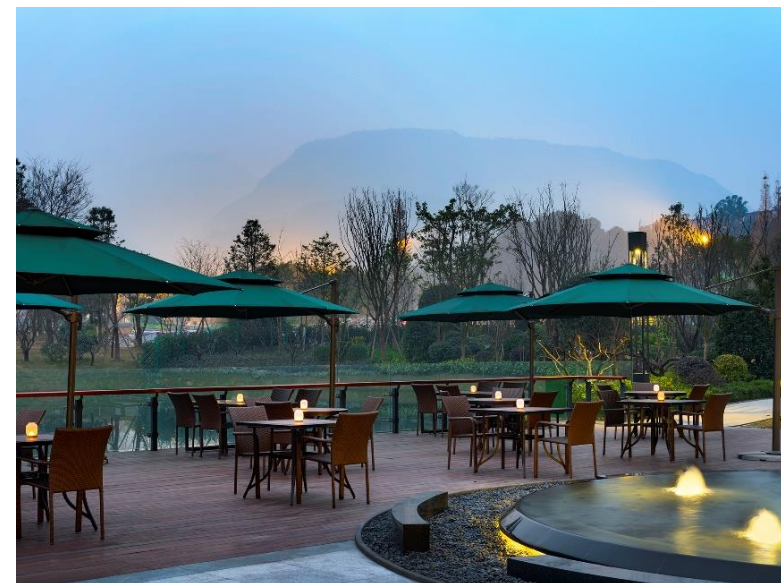


LATEST RECIPE

新食谱餐厅

Our guest's curiosities and palates are sure to be stimulated by refined cuisine prepared with the freshest ingredients at our Latest Recipe.

全天候特色餐厅采用新鲜的食材制作出各种精致菜肴，极力挑逗每一位食客的好奇心与味蕾。



LEMERIDIEN CHINESE RESTAURANT

艾美轩

Le Meridien Chinese Restaurant supply Sichuan cuisine and Cantonese cuisine with seasonal ingredients. The restaurant has a spacious and comfortable hall and 5 private boxes named by Mount Emei scenic spots.

艾美轩中餐厅以简约时尚的中式装饰为主，提供新派川菜与经典粤菜。餐厅设有宽敞舒适的大厅，及5间以峨眉山景点命名的私人包厢。精选当季食材与海河鲜等，让宾客体验川粤之精髓。

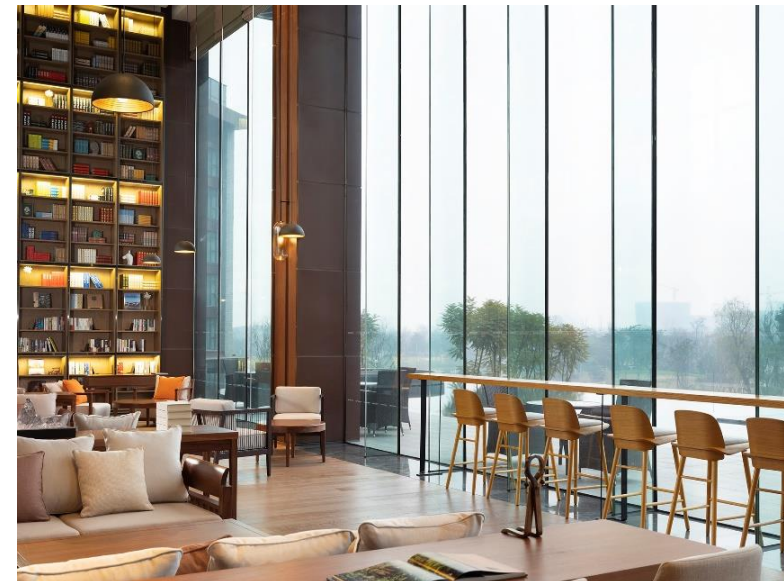


LE MERIDIEN BAR

艾美吧

Le Meridien Bar provides an ideal space for reading and relax, also can see the Le Meridien Lake and Mount Emei through the panoramic window.

充满文艺气息的艾美吧为宾客提供理想的阅读和休憩空间，透过全景落地窗观赏艾美湖及远眺峨眉山。





OTHER FACILITIES
其他设施

OTHER FACILITIES

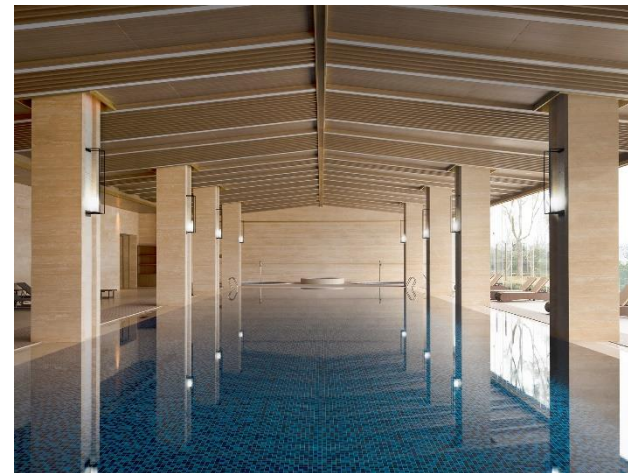
其他设施



Le Meridien Lake
艾美湖



Outdoor Pool
泡池



Indoor Swimming Pool
室内恒温游泳池



Fitness Center
健身中心



Tea House
茶艺室



Incense Room
品香室



BRAND EXPERIENCES

品牌体验

BRAND EXPERIENCES

品牌体验



Café Culture
咖啡文化



Sparkling
气泡酒计划



Éclair
闪电泡芙



Signature Breakfast
艾美特色早餐



Eye Openers
大开眼界计划



EMEI MOUNTAIN
峨眉山景区

INTRODUCTION

简介

Mount Emei lies on the northern latitude 30° southwest of Sichuan province. There will be "Samantabhadra Bodhisattva, son of the Buddha. Mount Emei, figurehead of the Mountain" from time immemorial. Mount Emei abundant in natural and cultural heritage. Reputation as "vegetable kingdom, animal paradise, geological museum, Buddhist paradise" a Buddhist holy land, Dojo of Samantabhadra Bodhisattva. UNESCO have been enrolling Mount Emei into world cultural and natural heritage list.

峨眉山位于神秘的北纬30°附近，雄踞在四川省西南部。自古就有“普贤者，佛之长子，峨眉者，山之领袖”之称。峨眉山自然遗产极其丰富，素有天然“植物王国”、“动物乐园”、“地质博物馆”之美誉。文化遗产极其深厚，是中国佛教圣地，被誉为“佛国天堂”，是普贤菩萨的道场。以其“雄、秀、神、奇、灵”的自然景观和深厚的佛教文化，被联合国教科文组织列入《世界文化与自然遗产名录》。





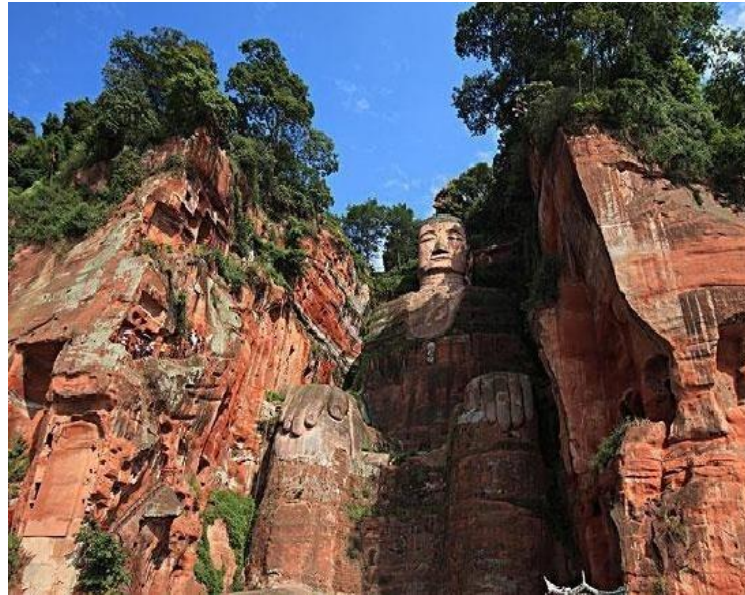
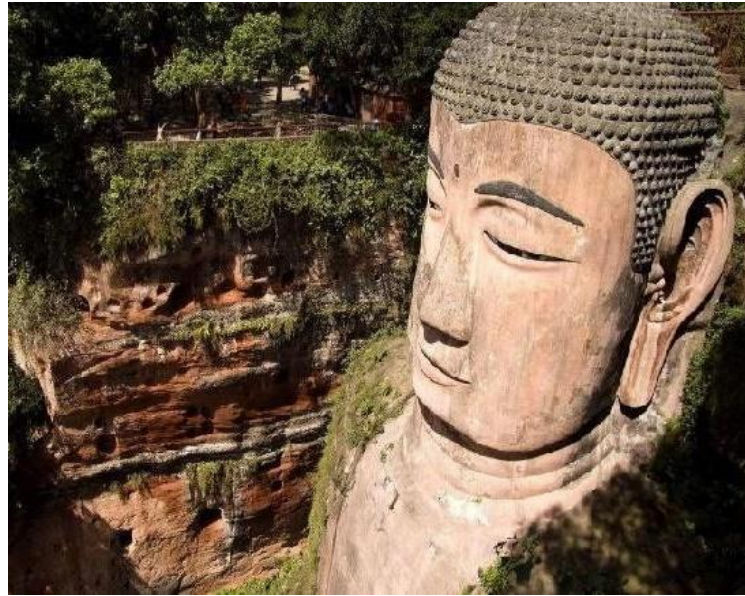
LESHAN GIANT BUDDHA
乐山大佛景区

INTRODUCTION

简介

Leshan giant Buddha scenic area is located in Leshan City, river confluence place of the Minjiang River, Qingyi River, Dadu River. The Leshan Giant Buddha on the other side of the river, scenic area constitute by Mt. Lingyun, MaHaoYan tomb, Mt. Wuyou, Giant sleeping Buddha. Tour area over 8 sq.km, beautiful landscape, culture and the hospitality of Leshan, belong to Emei mountain national scenic spot, a famous scenic tourist resort.

乐山大佛景区位于乐山市，岷江、青衣江、大渡河三江汇流处，与乐山城隔江相望。景区由凌云山、麻浩岩墓、乌尤山、巨形卧佛等组成，游览面积约8平方公里。景区集聚了乐山山水人文景观的精华，属峨眉山国家级风景区范围，是闻名遐迩的风景旅游胜地。





LOCAL DISHES

本地美食

LOCAL DISHES

本地美食



Fries Chuanchuanxiang
油炸串串



Beef from Suji
苏稽跷脚牛肉



Bobo Chicken
钵钵鸡



Jellied Bean Curd
豆腐脑



Beef Cake
咔饼



Spicy Hot Soup
麻辣烫



DESTINATION EXPERIENCES

目的地体验

DESTINATION EXPERIENCES

目的地体验



Climbing Mount Emei
登峨眉山



Gaoqiao Town
高桥里



Martial Art
武术



Paraglider
滑翔伞



Tea Picking
采茶



Rare Botanical Garden
珍稀植物园



Lakeside BBQ
湖畔烧烤



Mount Emei Museum
峨眉山博物馆



MUST-VISIT ATTRACTIONS

周边旅游景点

DESTINATION EXPERIENCES

周边旅游景点



Mount Emei Scenic Area
峨眉山风景区



Leshan Giant Buddha
乐山大佛景区



The Giant Buddhist Temple
大佛禅院



Jiayang Narrow-Gauge Train
嘉阳小火车



Exiu Lake
峨秀湖



Panda Ecologic Park
仙芝竹尖熊猫生态园



Leshan Ebony Cultural Museum
乐山乌木博览园



Primitive Forests In Heizhu Gully
黑竹沟原始森林



No. 555, Mingshan Road South Section, Emeishan City, Sichuan Province, China
T+ 86 833 532 8888
www.lemeridien.com/emeimountain

中国四川省峨眉山市名山路南段555号
电话：+86 833 532 8888
官方网址：www.lemeridien.com/emeimountain

Le **MERIDIEN**
EMEI MOUNTAIN RESORT
峨眉山恒邦艾美度假酒店