

WESTIN®

---

# 海口威斯汀酒店 The Westin Haikou

---

崭新网红地标 奢享城市之巅



## 海口概览 City of Haikou

---

海口地处海南岛北部，北濒琼州海峡，为海南岛的政治、经济、文化、商业及运输中心。海口被誉为“椰城”，为中国最大的滨海城市；蓝天、碧海、沙滩、椰林、文化遗址以及当地特色美食，营造悠然恬适的惬意生活。三面环海，拥有绵长的海岸线，同时，海口位于江海交汇处，是重要的港口城市。

Haikou is recognized as one of China's "Outstanding Tourism Cities" known for its clean air and beautiful sunshine, which is also political, economic, technological and cultural center of Hainan.

**WESTIN®**

The Westin  
Haikou

酒店概览

Hotel Overview





# 位置优越 Location

俯瞰海口湾区，独揽江海胜景  
毗邻世纪大桥，链接城市绿道  
簇拥三大公园，畅享健康生活

With lush, serene Century Park, Evengreen Park and Binhai Park at our doorstep, the Haikou Bay around the corner, the Westin Haikou, offers perfect balance in breathtaking surroundings.





# 交通便利 Convenience

Convenience



至国贸金融商业区，3km，10分钟车程

To CBD, 3km, 10-minute drive

至海南日月广场免税店、海控全球精品（海口）免税城，5km，10分钟车程

To China Duty Free MOVA, Hainan Duty Free MOVA, 5km, 10-minute drive

至N次方公园、海南友谊阳光城，3km，9分钟车程

To N° Park, FRIENDSUNNYCITY, 3km, 9-minute drive

至海口东站，8km，20分钟车程

To Haikou East Railway Station, 8km, 20-minute drive

至海口美兰国际机场、海口美兰机场免税店，25km，40分钟车程

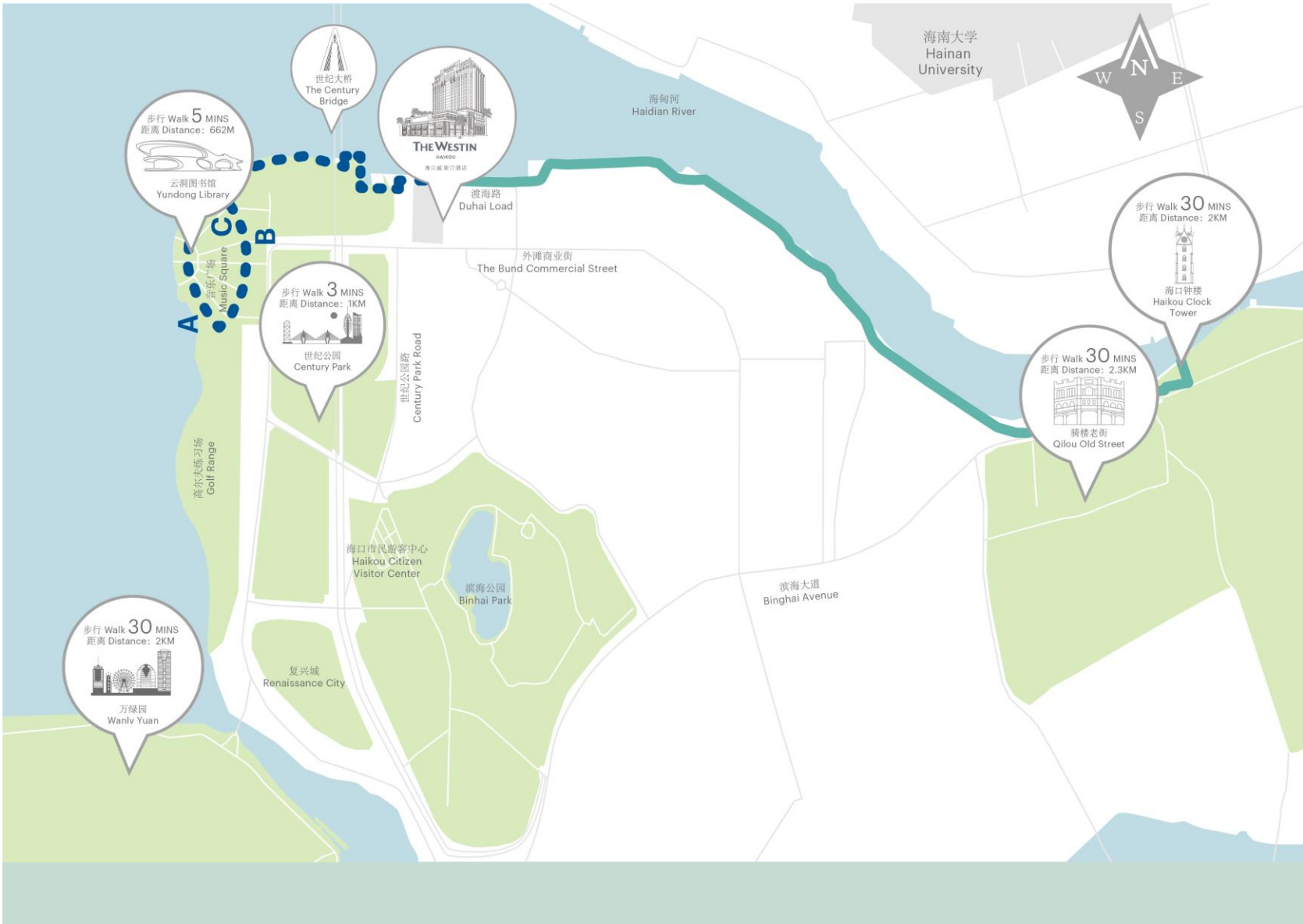
To Haikou Meilan Airport, Haikou Meilan International Airport DF, 25km, 40-minute drive

至海南国际会展中心，17km，30分钟车程

To International Convention & Exhibition Center, 17km, 30-minute drive

至海口观澜湖免税城深圳免税，17km，30分钟车程

To TIMESDF, 17km, 30-minute drive



# 绿道慢生活 Healthy Walk Path

环绕酒店的健康绿道，西起丽晶路，东至龙珠桥，沿线串联钟楼、骑楼老街、世纪大桥、万绿园、世纪公园等城市景观，有机串联的“城市观光旅游新链条”。远眺大海，近观椰影，海风徐徐，令人心旷神怡，感受着这座城市的绿色慢行休闲系统。

Surrounding the hotel's healthy walk path, from Lijing Road to Longzhu Bridge, route Haikou Clock Tower, Qilou Street, Centry Bridge, Evengreen Park, Centry Park. Looking at the sea from afar, watching the coconut trees closely, the sea breeze slowly makes you feel relaxed and happy.

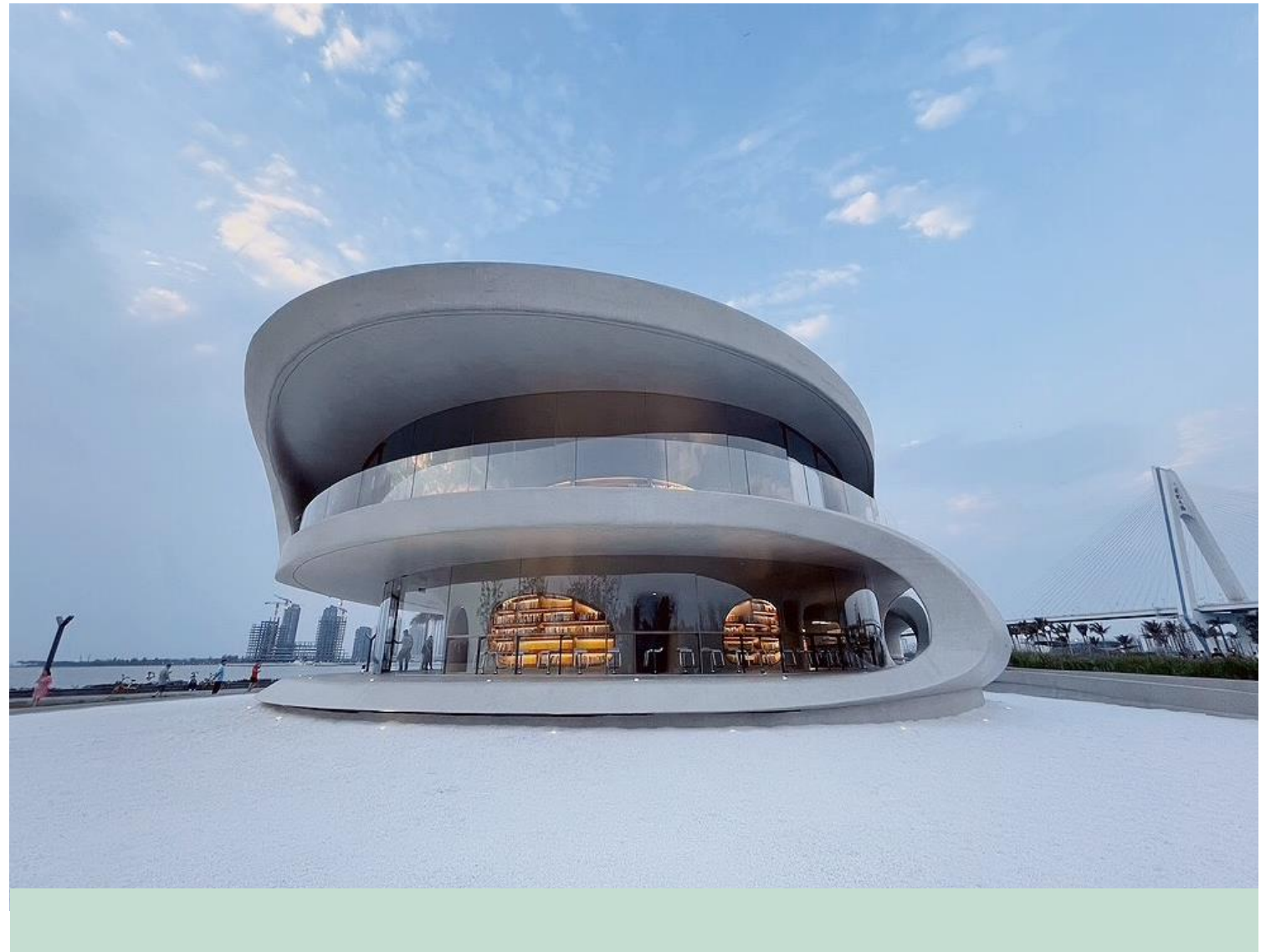


# 全新网红地标—云洞图书馆 Wormhole Library

距离 Distance: 662M      步行 Walk **5** MINS

被英国《泰晤士报》称为2021年最期待建成的建筑作品，造型采用“洞”的概念，二层引入“晓岛”阅读空间，总面积近700平方米，存放万本图书，包含咖啡厅、阅读区和屋顶露台。

The most expected building by <The Times>.  
Wormhole Library is a public space with functions of a small library and coastal walkway station.

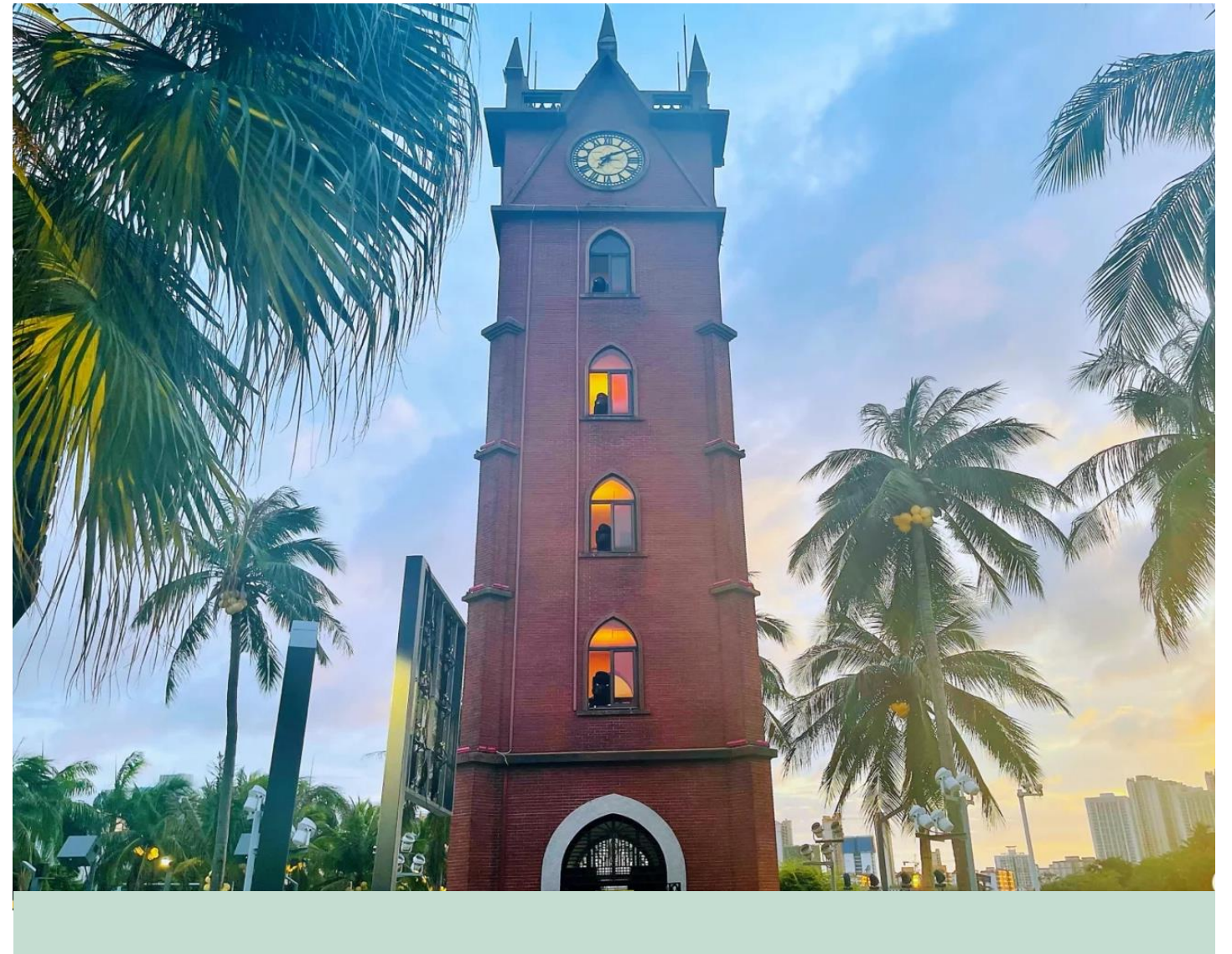


# 聆听古钟新声—海口钟楼 Haikou Clock Tower

距离 Distance: 2KM      步行 Walk **30** MINS

海口八景之一，它历史悠久，最早是为适应对外通商而建立，已成为海口的最重要的标志性与象征性建筑物之一。

Haikou Clock Tower, one of the eight scenic spots in Haikou which has a long history and was first established to adapt to foreign trade. It has become one of the most important landmark and symbolic buildings in Haikou.





# 漫步南洋街头—骑楼老街 Qilou Street

距离 Distance: 2.3KM    步行 Walk **30** MINS

最古老的建筑四牌楼建于南宋，至今有700多年历史。南洋建筑风格，因其唯一性、独特性荣获首批十大“中国历史文化名街”称号。

The most oldest building with Nanyang style architecture at Qilou Street has 700 years history.



# 畅享天然氧吧

## Surrounding Parks Natural oxygen bar



世纪公园  
Century Park

距离 Distance: 1KM      步行 Walk **3** MINS

以大众休闲健身活动为主题的市级综合性运动休闲文化公园，园区拥有足球场、篮球场、健身跑道、高尔夫练习场等体育运动设施。

Century Park is adjacent to Century Bridge, Evengreen Park and Binhai Park. There is a wide plastic track and football field and many people exercise here every morning and evening cause of coast is nearby, is a good place for people to relax.



滨海公园  
Binhai Park

距离 Distance: 1.5KM      步行 Walk **10** MINS

滨海公园集园艺、娱乐为一体，是一座欧陆建筑风格的大型现代化综合性游乐园。绿野清风虫鸣叶曲，公园宽阔高低有致，徜徉其中，令人心情愉悦。

Binhai Park is the perfect combination of city garden and amusement park, Green field, clear wind, insects chirping and leaves curling, and the park is wide and strewn, which across from the playground is a huge artificial lake, All the buildings are in European style.



万绿园  
Evengreen Park

距离 Distance: 2KM      步行 Walk **30** MINS

独具热带滨海特色和生态风景园林特色，将蓝天、绿水、原野、现代化高楼融为一体，以海南热带观赏植物为主，让游人在都市喧嚣之中享受一隅寂静，体会人与自然和谐交融的美好情趣。

Unique tropical coastal features and ecological landscape features with Hainan tropical ornamental plats.



# 海口外滩中心游艇码头 Marina

距离 Distance: 200M      步行 Walk **3** MINS

位于酒店江畔，毗邻海口世纪大桥，坐享得天独厚的海湾景观与城市繁华地理优势，预计拥有50多个专属游艇泊位。从高端商务游艇观海、游艇婚礼、海航试驾到水上休闲表演，尊享奢华之旅。

Located the riverside of hotel, beside the Haikou Century Bridge, enjoy the unique Haikou Bay view and prosperous city geographical location, will be more than 50 yacht berths. Related facilities and services include high-end business yacht viewing the sea, yacht wedding, driving and water leisure show, you can enjoy the luxury journey.



**WESTIN®**

The Westin  
Haikou

# 客房与行政酒廊 概览

## Guestrooms & Executive Lounge





# 俯瞰海口湾美景

## Enjoy Haikou Bay View

---

- 欧式建筑风格与周边自然美景的完美融合，由此踏上一段回归自然的身心探索之旅
- 297间设施完备的客房，饱览海口城市美景和天高海阔之美
- 5间餐厅及酒吧，多重中西式餐饮体验
- 完备的康体娱乐设施：健身中心、空中泳池、天梦水疗中心、桑拿房
- 市内最大宴会场地：1,000平方米无柱宴会厅

- European architecture style with natural scenery, starting a journey close to nature.
- 297 contemporary guestrooms and suites, enjoy the city view or seaview
- 5 restaurants and bars, experience Chinese and Western food
- Fitness facilities : a gym, 2 swimming pool, Heavenly® Spa and sauna room
- The biggest ballroom in Haikou: 1,000m<sup>2</sup>



# 宽敞的空间和完善的服务

## Comfort room and service



Heavenly® Bed



Sleep Well Menu



Sleep Well Lavender Balm Amenity

-10种房型面积从47 m<sup>2</sup>至268 m<sup>2</sup>不等，配备专为舒适睡眠设计的威斯汀标志性天梦之床、天梦之浴，让您尽享一夜酣眠。

-10 room types with 47-268m<sup>2</sup>, each room has been designed with your comfort in mind, and all offer the signature Westin Heavenly® Bed and the Heavenly® Bath to let you get an amazing night's rest.



房型概览

Room Type Overview

	数量 Quantity	面积 Size	大床房 King Size	双床房 Queen Size
城景房（含残疾人房3间） City View Room(Including 3 Accessible Rooms)	63	47	23	40
湾景房 Bay View Room	50	47	10	40
江海胜景房 Panorama Room	72	47	45	27
行政湾景房 Executive Bay View Room	43	47	15	28
家庭亲子套房 Family Suite	6	79	6	---
活力外滩套房 Renewal Suite	20	79-126	20	---
江海胜景套房 Panorama Suite	27	74-94	27	
甄选江海胜景套房 Grand Panorama Suite	14	107-141	14	---
外滩双卧套房 Two Bedroom Bund Suite	1	208	1	---
总统套房 Presidential Suite	1	268	1	---
总数 Total Rooms and Suites	297	---	162	135

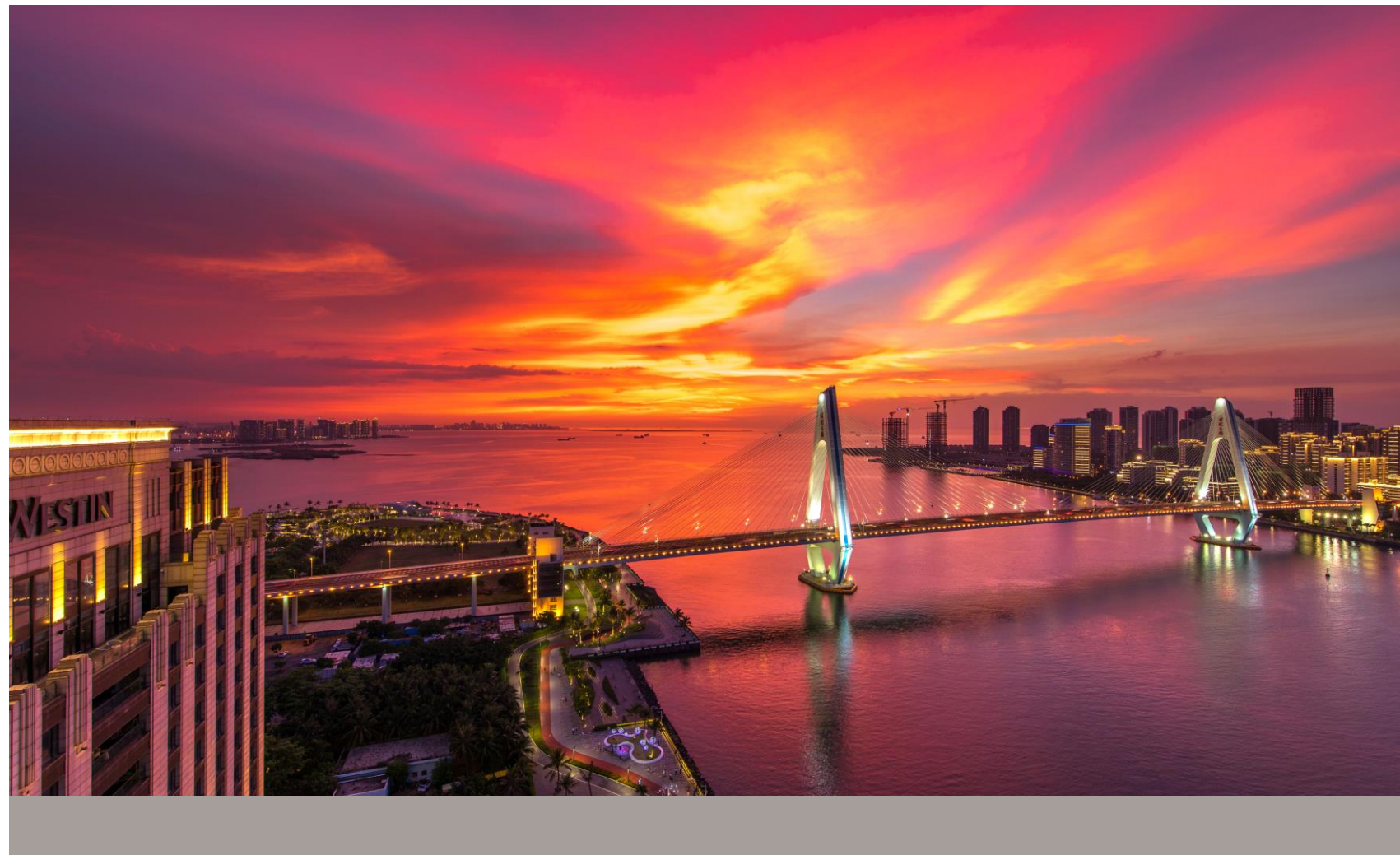
# 经典特色房型

---

## 江海胜景房

### Panorama Room

- 47m<sup>2</sup>
- 1张1.8m大床  
With one 1.8m king bed
- 江海交汇处景观/世纪大桥美景  
Panoramic views of the river-sea junction  
and Haikou Century Bridge





# 经典特色房型-威斯汀网红套房

## 外滩双卧套房

## Two Bedroom Bund Suite

- 行政楼层礼遇  
Enjoy executive floor benefit
- 江海胜景/世纪大桥/海口湾/公园自然风貌  
Panorama view, Haikou Century Bridge  
Haikou Bay and park view



- 208 m<sup>2</sup>
- 超大海景浴缸  
Bathtub with seaview
- 2张2m特大床  
Two 2m king bed



# 经典特色房型—总统套房 Presidential Suite



- 268m<sup>2</sup>
- 行政楼层待遇  
Enjoy executive floor benefit



- 江海胜景/城市景观/世纪大桥/海口湾/公园自然风貌  
Panorama view, city view, Haikou Century Bridge,  
Haikou Bay and park view





# 行政客房及酒廊

## Executive Rooms & Lounge



行政楼层位于18-20层，共43间精致舒适的行政豪华海景房，坐拥壮阔海景。行政酒廊位于二十层，设有会议室、休闲区、开放式露台等多功能区域。酒廊外宽敞的L型露台俯瞰世纪大桥与滨海大道，客人在此可以观赏海上日出变幻万千的绚烂美景；黄昏时分，又可以饱览日落西山摄人心魄的瑰丽景色。



Executive floor situated on 18-20F of the hotel, has 43 executive seaview room. The executive lounge has a comprehensive range of multipurpose areas, including meeting spaces, a living room, an outdoor terrace.



**WESTIN®**

The Westin  
Haikou

餐厅及酒吧  
Restaurant &  
Lounge





# 匠心之作 Create with ingenuity

在海口威斯汀，我们选用本地欧盟认证的食材直供基地，从原产地追溯您的品质生活，菜肴呈现地道风味并兼容健康。经验丰富的明星厨师团队潜心钻研，打造应季菜单及汇聚经典与创意的料理。

At Haikou Westin Hotel, choose the local direct supply base of food materials certified by European Union, to trace your quality life from the origin. The dishes present authentic flavor and health. The experienced star chef team is dedicated to creating seasonal menu and gathering classic and creative cuisine.



# 知味西餐厅

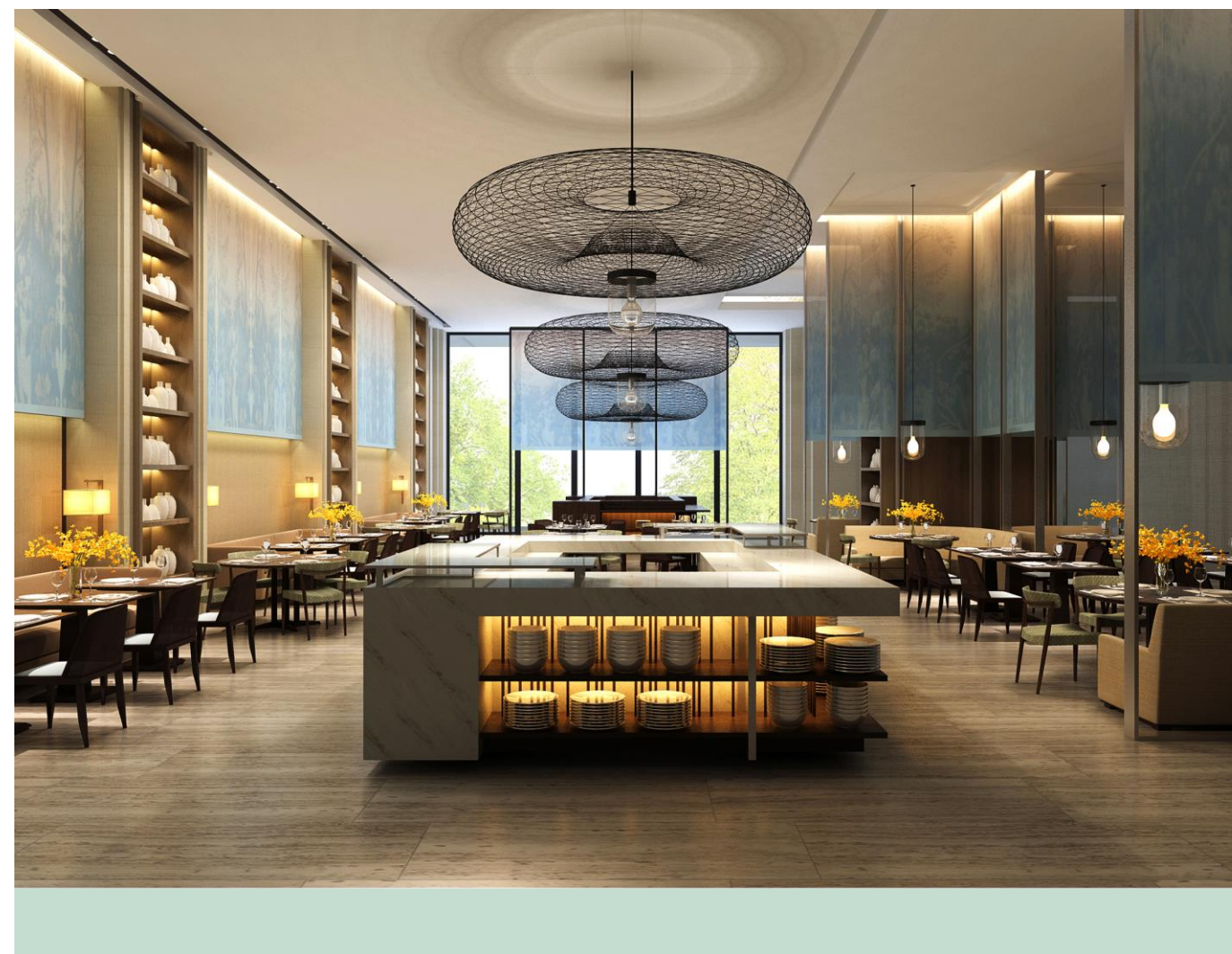
## Seasonal Tastes

位于酒店1层，坐揽海口世纪大桥与海口湾落日晚霞美景。餐厅选用高品质新鲜食材，精心烹制美味，荟萃东西方风味，倾力打造别具特色的全日制餐饮体验。

Situated on 1F of the hotel, enjoys the beautiful scenery of Haikou Century Bridge and Haikou Bay. Offering Chinese and Western fusion breakfast buffet with a unique dining experience with fresh bold tastes using fine and fresh ingredients available.

面积 **Area: 690 m<sup>2</sup>**

餐位数 **Seat: 256**





# 中国元素中餐厅

## Five Sen5es

位于酒店3层，坐揽世纪大桥及江海交汇的壮丽美景。由2017年央视《厨王争霸》总冠军、亚洲十大青年名厨--阮仲孟先生坐镇，供应创新粤菜和各式当地美食。秉承传统烹饪技法，严选优质食材，缔造味觉享受。16个雅致私人包厢，最大包厢可同时容纳24位宾客。

Situated on 3F of the hotel, surrounded by the magnificent scenery of Century Bridge and the intersection of river and sea. Mr. Ruan Zhongmeng, the champion of CCTV-2 "Chef King Competition" in 2017 and one of the top ten young celebrity chefs in Asia, serves delicious food. Taking traditional recipes and enhancing the flavors using only the finest ingredients.

面积 **Area: 1,000 m²**

餐位数 **Seat: 256**





# 大堂吧 Lobby Lounge

位于酒店1层，分别设有吧台、舒适沙发及悠闲雅座。供应落日系列下午茶，为您打造休闲午后的非凡体验。

Situated on 1F of the hotel, an intimate yet dramatic setting for sunset afternoon tea theme.

面积 **Area: 350 m<sup>2</sup>**

餐位数 **Seat: 80**





## Q吧 Qba

位于酒店1层，极富拜占庭元素的设计风格设计，令您沉浸于令人陶醉的湾畔美景，收获夕阳西下与夜晚的轻松时刻，在乐队精彩演绎中，享用特色创意鸡尾酒、威斯汀鲜调及精选有机葡萄酒等。

Situated on 1F of the hotel, with Byzantine bararchitecture style. Enjoy exotic cocktails, wines and Germany snacks in the sun set and spectacular views of Haikou Bay with the band performance.

面积 Area: 510 m<sup>2</sup>

餐位数 Seat: 180

# 静憩之所 平衡身心

## Fitness and Free Time

- 1间全天24小时开放的健身中心含瑜伽房，配备品牌训练器材，让您重获新生能量
- 1个260平米的空中泳池以及2个户外恒温水力按摩泡池，可俯瞰城市天际线的360度全景
- 天梦水疗中心拥有11间理疗室，其中2间带有水力按摩池

- WestinWORKOUT® Fitness Studio include a Yoga space is open 24 hours a day
- An outdoor swimming pool and 2 heated message pool
- Heavenly® Spa has 11 physical therapy rooms include 2 rooms with message pools





# 宴会及会议空间

## Events & Meeting

位于酒店2层，独立入口，透过宴会前厅全景落地窗可全方位鸟瞰江海美景。近2,000 m<sup>2</sup>的多功能会议空间，包括一个面积1,000 m<sup>2</sup>的无柱式大宴会厅及8间独立中小型会议室，大宴会厅又可以灵活的被划分为3个独立的多功能区，创新空间完美体现。

Situated on 2F of the hotel, has independent entrance. Nearly 2,000 square meters of multi-functional meeting space, including a 1,000 square meter column-free grand banquet hall and 8 independent small and medium-sized meeting rooms, the grand banquet hall can be flexibly divided into 3 independent multi-functional areas.

- 先进的视听及照明系统

-高科技LED显示屏

-高速无线网

-专业的技术支持

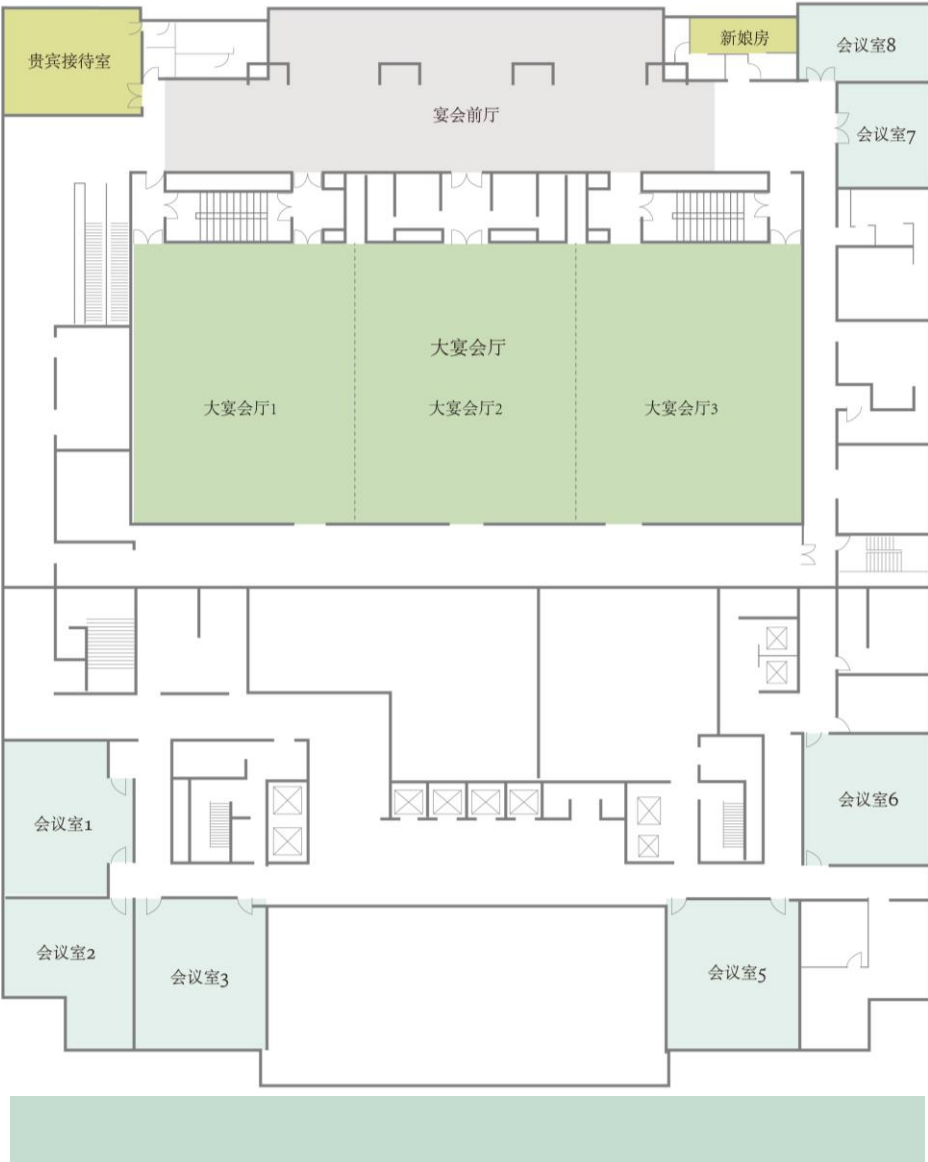
-4种主题茶歇：南洋往事/黎苗风情/自贸港之风/活力威斯汀
- Advanced audio & lighting system

- LED screen

- High speed WIFI

- Professional technical support

- 4 themed coffee breaks



	Area(SQM)	Length	Width	Height	Classroom	Theater	U Shape	Banquet*10	Reception	Boardroom
Grand Ballroom 大宴会厅	1000	47	21.3	8	420	900	360	600	900	N/A
Grand Ballroom 1 大宴会厅1	341	16	21.3	8	120	240	80	160	240	48
Grand Ballroom 2 大宴会厅2	320	15	21.3	8	120	240	80	160	240	48
Grand Ballroom 3 大宴会厅3	341	16	21.3	8	120	240	80	160	240	48
Grand Ballroom 1+2 大宴会厅1+2	661	31	21.3	8	240	480	160	360	500	N/A
Grand Ballroom 2+3 大宴会厅2+3	661	31	21.3	8	240	480	160	360	500	N/A
Function Room 1 多功能厅1	65	10	6.5	4	N/A	N/A	N/A	N/A	N/A	13
Function Room 2 多功能厅2	50	8.5	5.5	4	N/A	24	12	20	20	12
Function Room 3 多功能厅3	85	10	8.5	4	24	36	18	40	40	18
Function Room 5 多功能厅5	85	10	8.5	4	24	36	18	40	40	18
Function Room 6 多功能厅6	60	8.3	7.3	2.4	30	48	18	60	60	18
Function Room 7 多功能厅7	40	6.3	6	2.4	18	24	12	20	20	12
Function Room 8 多功能厅8	40	8	5	4	18	20	12	20	20	12
VIP ROOM 贵宾接待室	65	7.8	8	4	18	20	12	30	20	12
Grand Ballroom Foyer 宴会前厅	500	50	10	8	N/A	N/A	N/A	200	400	N/A





宴会厅Ballroom



# 特色主题活动场所-威斯汀扒房

## Grange Grill

面积 Area: 500 m<sup>2</sup>  
餐位数 Seat: 132

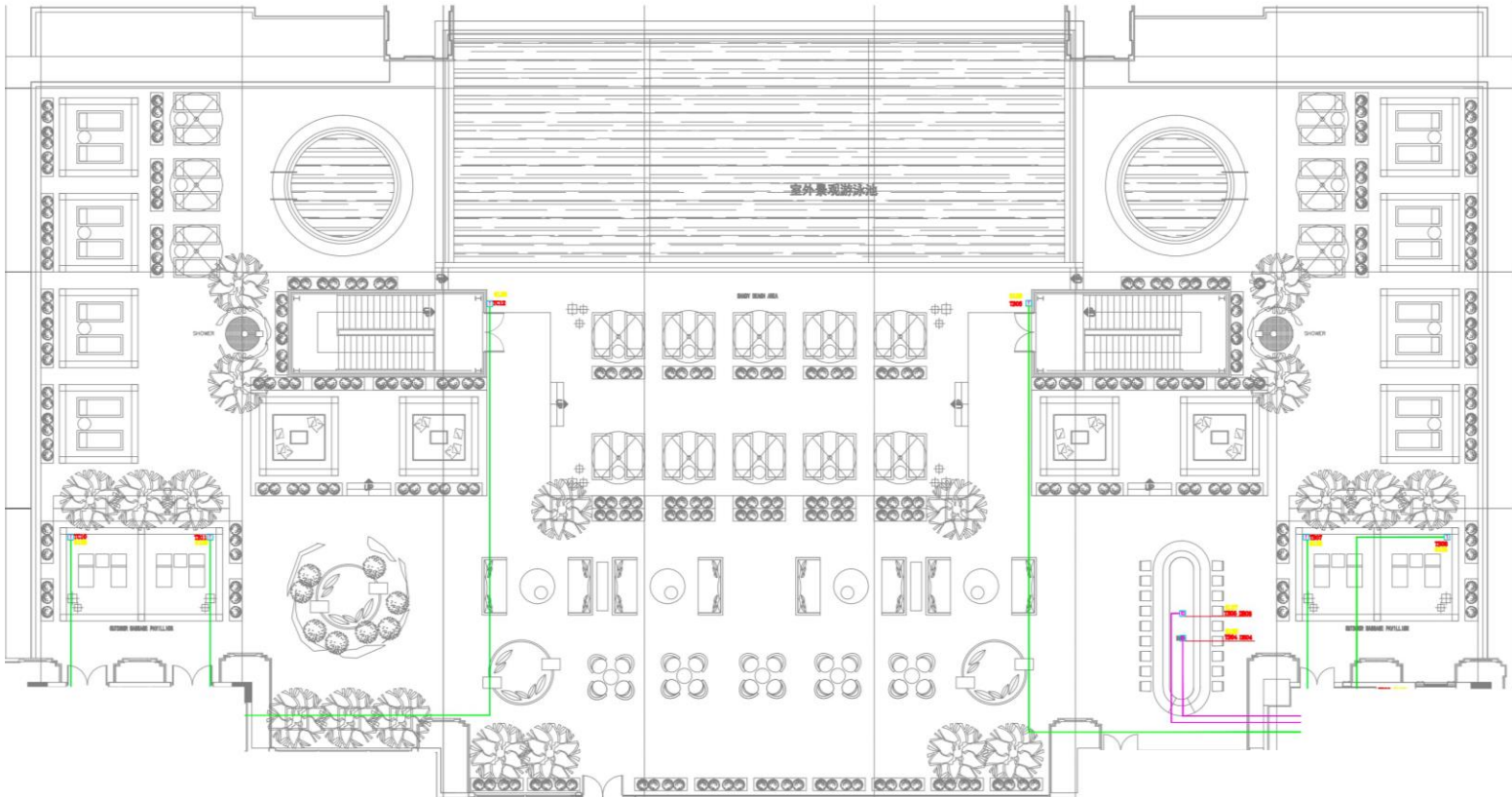




# 特色主题活动场所-池畔吧

## Pool Bar

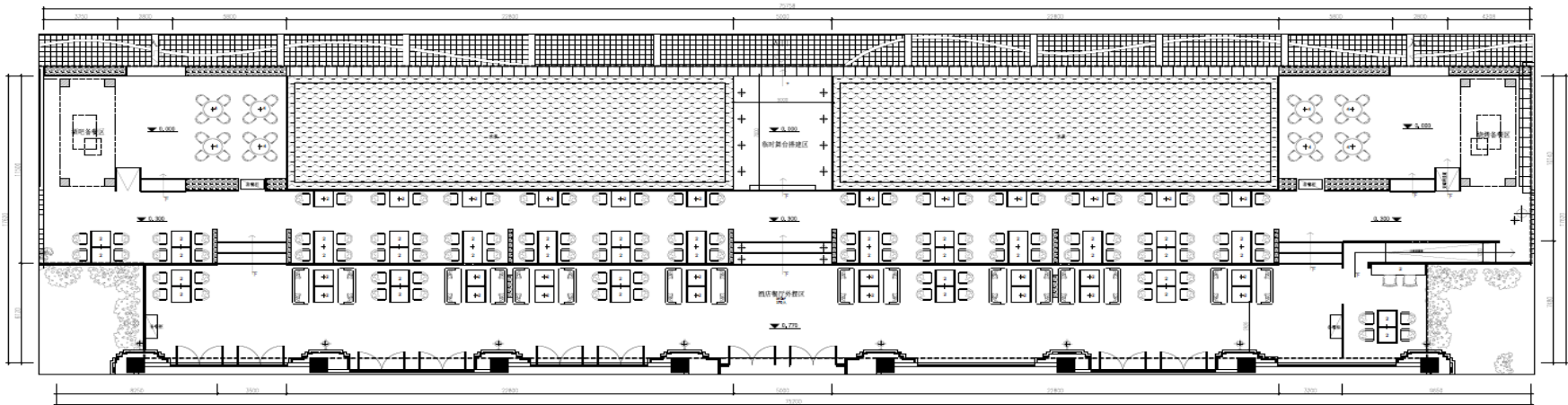
面积 **Area:** 1,136 m<sup>2</sup>  
座位数 **Seat:** 82





# 特色主题活动场所-后广场 Outdoor Dinning Space

面积 **Area:** 500 m<sup>2</sup>  
餐位数 **Seat:** 134



P8户外全彩显示屏，显示面积：27.6m\*4.6m，共127平米 (分辨率：3456点\*576点)



**WESTIN®**

Thank You

海口威斯汀酒店  
中国海南省海口市  
龙华区渡海路100号 (570105)  
[westin.haikou@](mailto:westin.haikou@westin.com)  
[westin.com](http://westin.com)

