



SOFITEL FOSHAN  
佛山罗浮宫索菲特酒店



S O F I T E L  
HOTELS & RESORTS

01

HOTEL LOCATION 酒店位置

TRANSPORTATION 交通



# FOSHAN LOCATION

## 佛山位置



# HOTEL LOCATION

## 酒店位置



# FROM FOSHAN TO 从佛山前往

---

## BY CAR TO 开车.

- Guangzhou 广州 – 35 km ( 60 minutes )
- Zhongshan 中山 – 50 km ( 60 minutes )
- Zhuhai 珠海 – 90 km ( 90 minutes )
- Dongguan 东莞 – 97 km ( 90 minutes )
- Shenzhen 深圳 – 120 km ( 2 hours )

---

## BY COACH TO 巴士.

- Hong Kong 香港 – 180 km ( 3 hours )
- Macau 澳门 – 135 km ( 2 hours )

---

## TO FERRY PORT 港口.

- Shunde Port 顺德港 – 39 km ( 60 minutes + 2 hours ferry ride to Hong Kong, 60分钟到顺德港, 两小时船到香港)



# FROM FOSHAN TO 从佛山前往

---

## AIRPORT 机场.

- |  |          |         |                |
|--|----------|---------|----------------|
| ▪ Guangzhou Baiyun International Airport | 广州白云国际机场 | - 50 km | ( 1 hour )     |
| ▪ Foshan Shadi Airport                   | 佛山沙堤机场   | - 16 km | ( 22 minutes ) |
- 

## TRAIN STATION 火车，城轨.

- |                                   |      |         |                |
|-----------------------------------|------|---------|----------------|
| ▪ Guangzhou South Railway Station | 广州南站 | - 34 km | ( 30 minutes ) |
| ▪ Guangzhou East Railway Station  | 广州东站 | - 52 km | ( 80 minutes ) |



# 02

## FOSHAN INTRODUCTION 佛山简介

ATTRACTIONS, GOLF CLUBS, EXHIBITION CENTER

旅游景点，高尔夫俱乐部，会展场地





# MAIN TOURIST ATTRACTIONS OF FOSHAN

## 佛山热门旅游景点

---

● FOSHAN ZUMIAO TEMPLE	佛山祖庙	( 15 分钟 )
● FOSHAN LINGNAN TIANDI	佛山岭南天地	( 15 分钟 )
● ANCIENT NANFENG KILN	禅城南风古灶	( 20 分钟 )
● SHUNDE FLOWER WORLD	顺德花卉世界	( 20 分钟 )
● XIQIAO MOUNTAIN SCENERY RESORT	南海西樵山	( 25 分钟 )
● NANGUO PEACH GARDEN	南海南明桃园	( 40 分钟 )
● SHUNDE CHING FAI GARDEN	顺德清晖园	( 40 分钟 )
● SHANSHUI LOTUS WORLD	三水荷花世界	( 50 分钟 )
● BRUCE LEE MUSEUM	顺德李小龙公园	( 60 分钟 )



ANCIENT NAN FENG KILN



ZUMIAO TEMPLE



XIQIAO MOUNTAIN SCENERY RESORT





# UNESCO CITY OF GASTRONOMY

## 联合国教科文组织世界美食之都

The combination of inventive cooking methods, creative ways of presentation and outstanding flavors, make the city's cuisine truly exceptional.

“食在广州，厨出凤城（今佛山顺德）”顺德为粤菜的发源地。千年的真味传承中，顺德名厨辈出，将岭南文化的灵巧纤秀、兼容并蓄融入烹饪之中，烹制出了“清、鲜、爽、嫩、滑、真”的人间美味，在粤菜中独树一帜，被誉为“粤菜之源”。



ASSORTED SASHIMI



FISH FILLETS



DIM SUM



# EXHIBITION IN FOSHAN

## 佛山会展场地

---

### LOUVRE INTERNATIONAL FURNITURE EXHIBITION CENTER

#### 罗浮宫国际家具博览中心

The biggest furniture expo in the world, Louvre Furnishings Group has an area of 200,000 sq m of 600 high quality and luxury furniture shops, which is connected to Sofitel Foshan, was appointed by the government at all levels as an example for successful organization of commerce and trade.

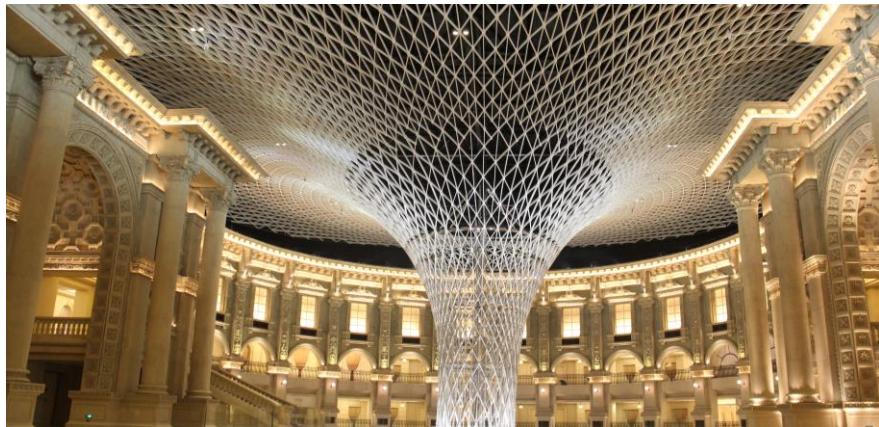
罗浮宫国际家具博览中心，是中国家具商贸之都乐从的地标性建筑，是集国际家居购物、家居艺术鉴赏、商业考察、商务洽谈、行业盛会、休闲美食于一体的家居商业旅游名胜。





# LOUVRE INTERNATIONAL FURNITURE EXHIBITION CENTER

## 罗浮宫国际家具博览中心



# EXHIBITION IN FOSHAN

## 佛山会展场地

---

### TANZHOU INTERNATIONAL EXHIBITION CENTER

#### 广东潭洲国际会展中心

The Guangdong Tanzhou International Convention and Exhibition Center (GICEC), is the only venue of its kind in China tailored to serve the specific needs of industrial exhibitions. It is a merely 10 minutes drive from hotel.

广东（潭洲）国际会展中心选址于佛山市顺德区中德工业服务区内，是广佛都市圈的核心区域，也是顺德北部片“一心两翼”发展战略的核心所在。定位为珠三角乃至华南地区的专业产业交易会；国内外新科技、新产品、新成果展示场所；国际、国内新产业、新技术高峰论坛；中小企业服务的国际性专业展馆。





# EXHIBITION IN GUANGZHOU

## 广州会展场地

---

### PAZHOU INTERNATION EXHIBITION CENTER

#### 琶洲国际会展中心

The Canton Fair is a comprehensive one with the broadest distribution of overseas buyers and the greatest business turnover in China.

中国进出口商品交易会又称广交会，每年春秋两季在广州举办，迄中国目前历史最久、层次最高、规模最大、商品种类最全、到会客商最多且国别地区分布最广、成交效果最好、信誉最佳的综合性国际贸易盛会。



# GOLF CLUBS IN FOSHAN

## 佛山高尔夫球俱乐部

- 
- Royal Orchid International Golf Club – 18 HOLES  
( 16 km / 30 minutes drive )  
佛山市顺德区北滘君兰国际高尔夫俱乐部 – 18 洞
  - Peach Garden Golf Club – 27 HOLES  
( 28 km / 45 minutes drive )  
佛山市南海区南国桃园高尔夫球会 – 27 洞
  - Emerald Lakes – 18 HOLES  
( 53 km / 60 minutes drive )  
佛山市三水区云东海高尔夫球会 – 18 洞



NO.6 HOLE OF ROYAL ORCHID INTERNATIONAL GOLF CLUB



# 03

## SOFITEL FOSHAN INTRODUCTION 酒店介绍

ACCOMMODATION, RESTAURANTS AND BARS, SO FIT, SO SPA, MEETINGS  
住宿, 餐饮, 健身, 会议





# SOFITEL FOSHAN

## 佛山罗浮宫索菲特酒店

Sofitel Foshan is located in China Leading Furniture City – Lecong in Shunde and connected to Louvre International Exhibition Furniture Center. It is the first property of Accor under its flagship Sofitel Hotels & Resorts brand in Foshan, Guangdong Province. Sofitel Foshan opened in July, 2017 featuring an amazing interior design, stylish furniture, and well blended with French and Cantonese “Art de Vivre” in Foshan.

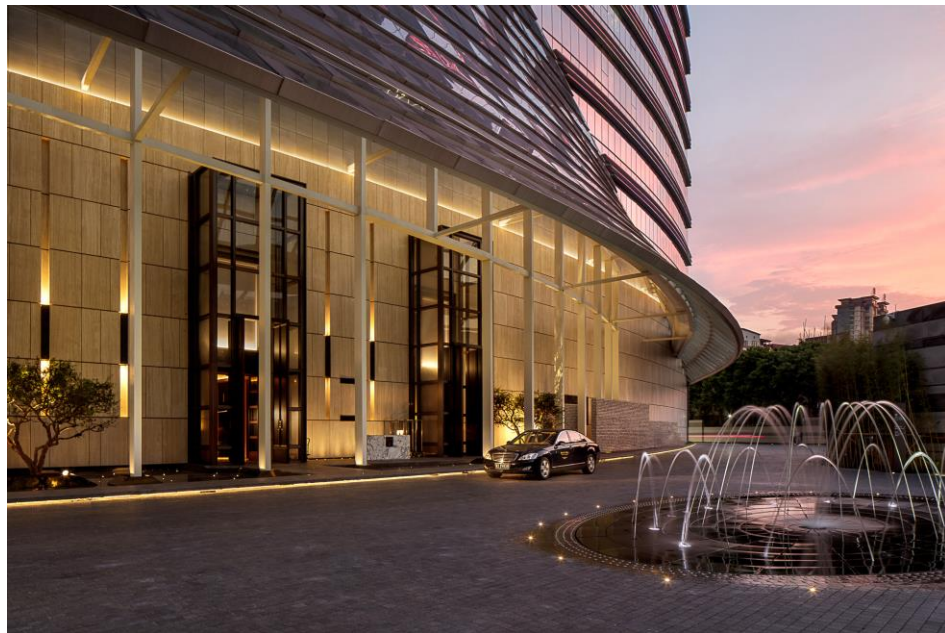
佛山罗浮宫索菲特酒店位于中国家具商贸之都----顺德乐从，与罗浮宫国际家具博览中心为伴，是雅高酒店集团在佛山市的第一家索菲特酒店。2017年7月开幕的佛山罗浮宫索菲特酒店致力于提供奢华精致的住宿体验，融合法式及粤式生活艺术 “Art de Vivre” 。



# SOFITEL FOSHAN

## 佛山罗浮宫索菲特酒店

- 325 Rooms and Suites with 4 Different Interior Design
  - Highest Ceiling of 4 Meters in Guest Rooms
  - 918 sqm Pillar Less Ballroom with Baroque Style Decoration
  - Meetings and Conference Facilities
  - 2 Restaurants and 3 Bars
  - So Spa and 24 Hours So Fit Fitness Center
  - Indoor Swimming Pool
  - Laundry Service
  - Limousine Service
- 
- 325间四种不同室内设计风格的客房和套房
  - 客房层高达4米
  - 918 平方米巴洛克建筑风格宴会厅
  - 会议宴会设施
  - 2个餐厅和3个酒吧
  - So Spa水疗和24小时的So Fit健身中心
  - 室内游泳池
  - 洗熨服务
  - 豪华轿车接送服务



# MODERN DESIGN ROOMS

## 酒店客房 - 现代风格

- From 43 sqm to 140 sqm, total 138 rooms
  - Trendy design furniture
  - A sense of calmness, simplicity and modernity
  - Cosy and comfortable
  - Selected 10 options of pillow menu
- 
- 共138间现代风格客房，面积由43平方米到140平方米
  - 简洁明亮的设计
  - 典雅宁静的时尚气息
  - 温馨舒适的布置
  - 多达十种枕头供选择



Modern 现代风格



# MODERN DESIGN ROOMS

## 酒店客房 - 现代风格







# POST MODERN DESIGN ROOMS

## 酒店客房 - 后现代风格

- From 43 sqm to 460 sqm, total 139 rooms
  - Post modern style furniture
  - Sense of art and unique interior design
- 
- 共139间客房，面积由43平方米到460平方米
  - 奢华精致的家具
  - 后现代风格的艺术气息

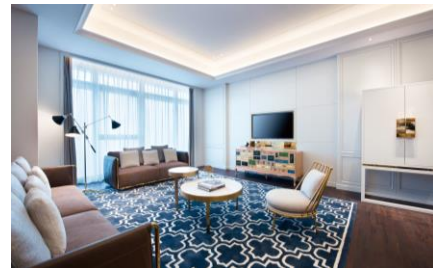


Post Modern 后现代风格



# POST MODERN DESIGN ROOMS

## 酒店客房 - 后现代风格







# NEO CHINESE DESIGN ROOMS

## 酒店客房 - 新中式风格

- Located on hotel Executive Floor
  - From 43 sqm to 460 sqm, total 18 rooms
  - Chinese Contemporary style furniture
  - Rainshower
  - L'Occitane bathroom amenities
- 
- 坐落在酒店行政楼层
  - 共18间新中式风格客房，面积由43平方米到460平方米
  - 当代中国风家具
  - 浴室配置热带雨林豪华卫浴设施
  - 法国品牌欧舒丹洗浴用品

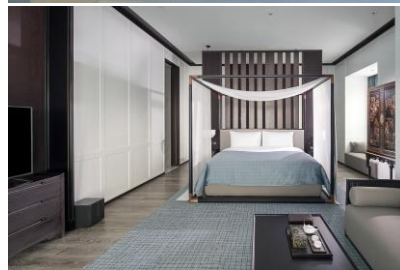
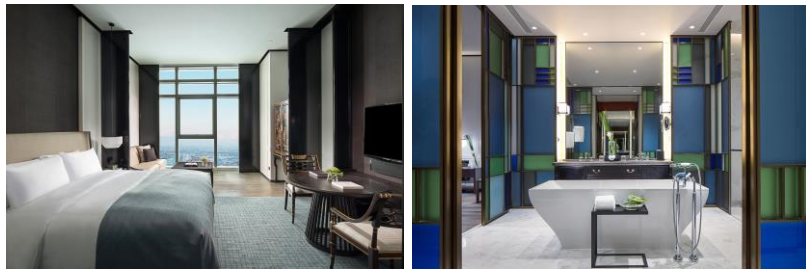


Neo Chinese 新中式风格



# NEO CHINESE DESIGN ROOMS

## 酒店客房 - 新中式风格







## FRENCH DESIGN ROOMS

### 酒店客房 - 法式风格

- From 43 sqm to 557 sqm, total 30 rooms
- French Louis XVI furniture style
- Elegant French touch
- 共30间法式客房，面积由43平方米到557平方米
- 法国路易十六家居风格
- 优雅法式体验



French 法式风格



# FRENCH DESIGN ROOMS

## 酒店客房 - 法式风格









# RESTAURANTS AND BARS

## 餐厅和酒吧

- Kwee Zeen 法国餐厅
- Sky Bar 天际酒吧
- Noble Bar 尚吧
- Allegria 意大利餐厅
- Le Bar 乐吧



ALLEGRIA



KWEE ZEEN

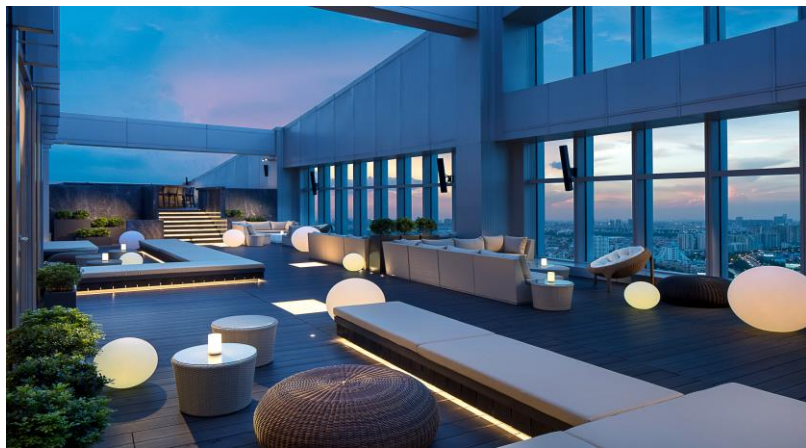
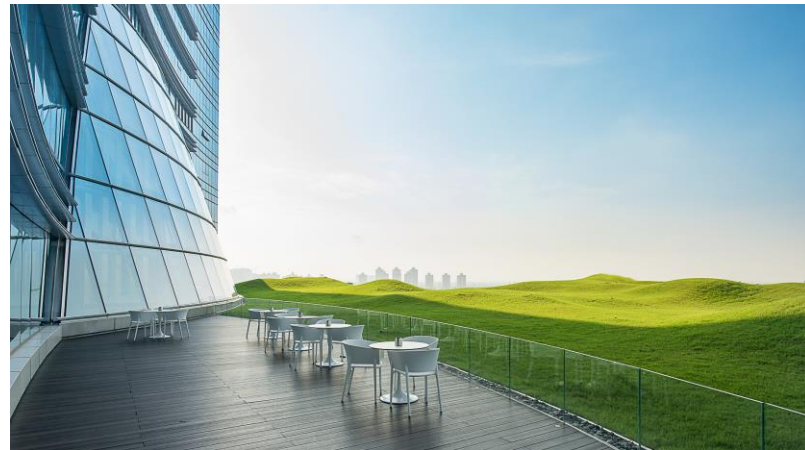


SKY BAR



# RESTAURANTS AND BARS

## 餐厅和酒吧



# SPA – FITNESS – SWIMMING POOL

## 水疗-健身-游泳池

Blending the best of local tradition and French beauty expertise to deliver the maximum benefit to the health of the skin, body and soul. French beauty treatments are performed with L'Occitane, bringing the French flair for rejuvenation and beauty care.

法国专业美容与中国传统相结合，致力让您的皮肤及身心达到和谐、健康。护理产品选择法国的欧舒丹系列。我们的每个护理都让您体验法国的优雅、专业及极致。享受纯植物手工护理，让身心放松及升华。



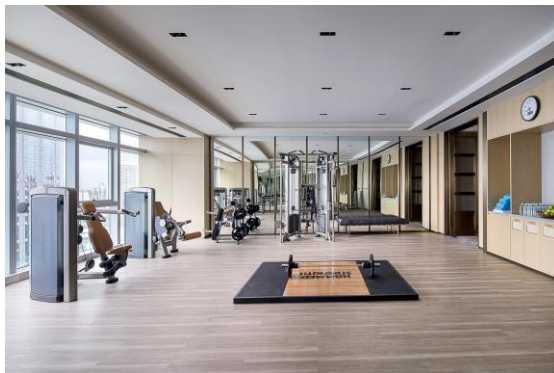
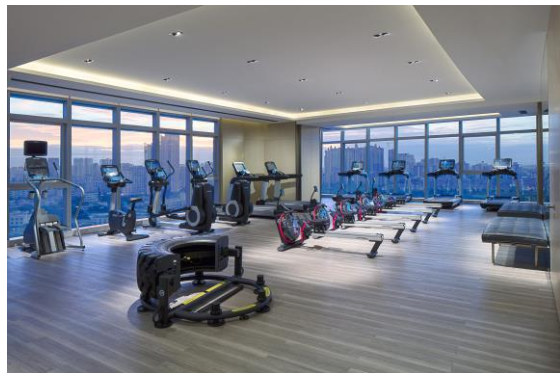


# SPA – FITNESS – SWIMMING POOL

## 水疗-健身-游泳池

The latest concept is on display in the So Fit 24-hour fitness center, including cardio, cross fit, strength and yoga equipment with Life Fitness® and a panoramic indoor swimming pool.

最新科技设备设施的24小时健身康体中心So Fit配备Life Fitness®运动器材，室内全景游泳池。



# MEETINGS AND CELEBRATIONS

## 会议及活动

-

Spectacular meeting and convention facilities. Total area of 918 sqm pillar less grand ballroom and spacious ballroom foyer, 6 meeting rooms, outdoor garden, latest A/V technology, full connectivity and innovative food and beverage offer.

拥有918平方米的无柱宴会厅，六间多功能会议室及户外花园。完善的现代化宴会，会议设备设施及创新的美食餐饮服务。



# NAPOLEON GRAND BALLROOM

## 拿破仑宴会厅

Inspired from “The Grand Salon of Napoleon III” located in the Louvre Museum in Paris. Total area of 918 sqm pillar less Baroque style grand ballroom and spacious ballroom foyer. Meet your demand of large conference and gorgeous banquet.

灵感源自于法国罗浮宫博物馆内的拿破仑三世展区，遵循巴洛克建筑风格设计，面积达918平方米的无柱宴会厅，满足大型会议及高端宴会需求。

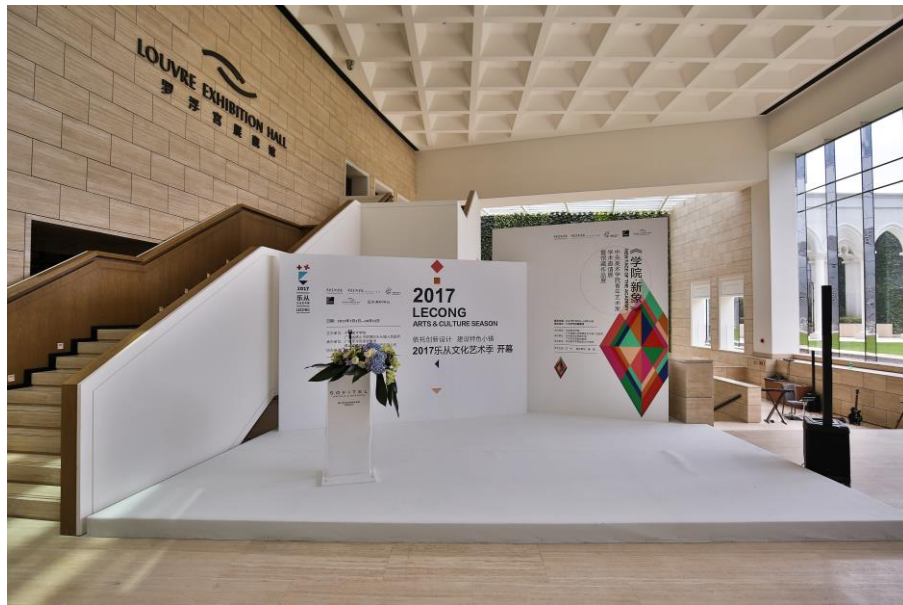


# LOUVRE EXHIBITION HALL

## 罗浮宫展藏馆

-  
A unique furniture museum on 9<sup>th</sup> and 10<sup>th</sup> floor of Sofitel Foshan with masterpieces that display to public.

位于酒店9、10层的罗浮宫展藏馆是佛山独一无二的特色博物馆，展出价值连城的大师级家具作品或艺术品供客人观赏。





## CONTACT US 联系我们



3 Hebin Road South, Lecong, Shunde District  
Foshan 528315, Guangdong Province - P.R.CHINA

中国广东省佛山市顺德区乐从河滨南路3号  
邮政编码 528315

TEL 电话: +86 (0) 757 2881 2222

FAX 传真: +86 (0) 757 2927 0001

E-mail 邮箱: [H8719-RE@sofitel.com](mailto:H8719-RE@sofitel.com)

Toll Free 预订热线 400 813 3388

