



濟南香格里拉大酒店  
**Shangri-La hotel**

---

JINAN

---

## SHANGRI-LA HOTEL JINAN HOTEL INTRODUCTION

Prepared by Coco Zheng

Updated on Sep 8 2017

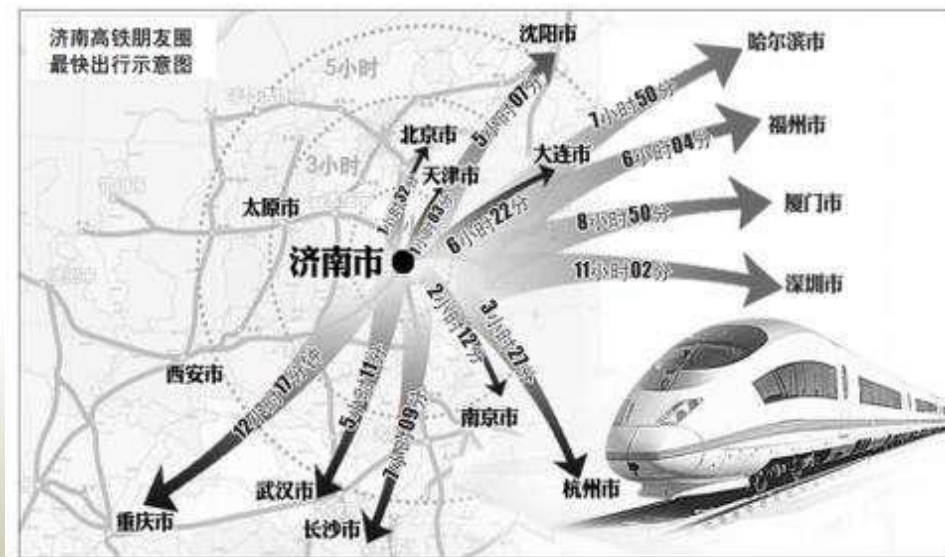
# About Jinan



Jinan is the capital city of Shandong Province in China. The city is located in north-western Shandong about 400 km south of Beijing, 860 km north of Shanghai. Surrounding cities are Qingdao, Taian (Tai Mountain), Jining, Zibo and Dezhou.

# Access by Plane

Jinan Yaoqiang International Airport is located 33 km northeast of the hotel, in the northern area of Yaoqiang town (遥墙镇) from which the name of the airport is derived. The airport is connected to the city centre of Jinan by expressways.



Jinan is positioned at the intersection of two major railways – the Jinghu Railway (京沪铁路) that runs from Beijing to Shanghai is the major north-south backbone of the railway system in eastern China. In Jinan, it intersects with the Jiaoji Railway (胶济铁路) that connects Jinan to the sea port of Qingdao to the east.





**Baotu Spring**

Literally: “Lake of the Great Splendor” is the largest lake in the city of Jinan and one of city’s main natural and cultural landmarks. Located to the north of the historical city center, the lake is fed by the artesian karst springs of the area and hence retains a fairly constant water level through the entire year.

**The Baotu Spring-** Baotu Spring is a culturally significant artesian karst spring located in the city of Jinan, Shandong, China. Baotu Spring is the symbol of Jinan city and one of top scenic spots in the city. Baotu Spring is the most outstanding one and enjoys the reputation as “the No. 1 spring in the world”.



**Daming Lake**



Thousand Buddha Mountain stands in the south of the city proper and was called Mount Lishan in the old times. According to legend, Yu Shun (one of the sagacious kings in the late primitive society of China) once tilled at its foot, so it is called Shun Tilling Mountain too.

### **Thousand-Buddha Mountain**

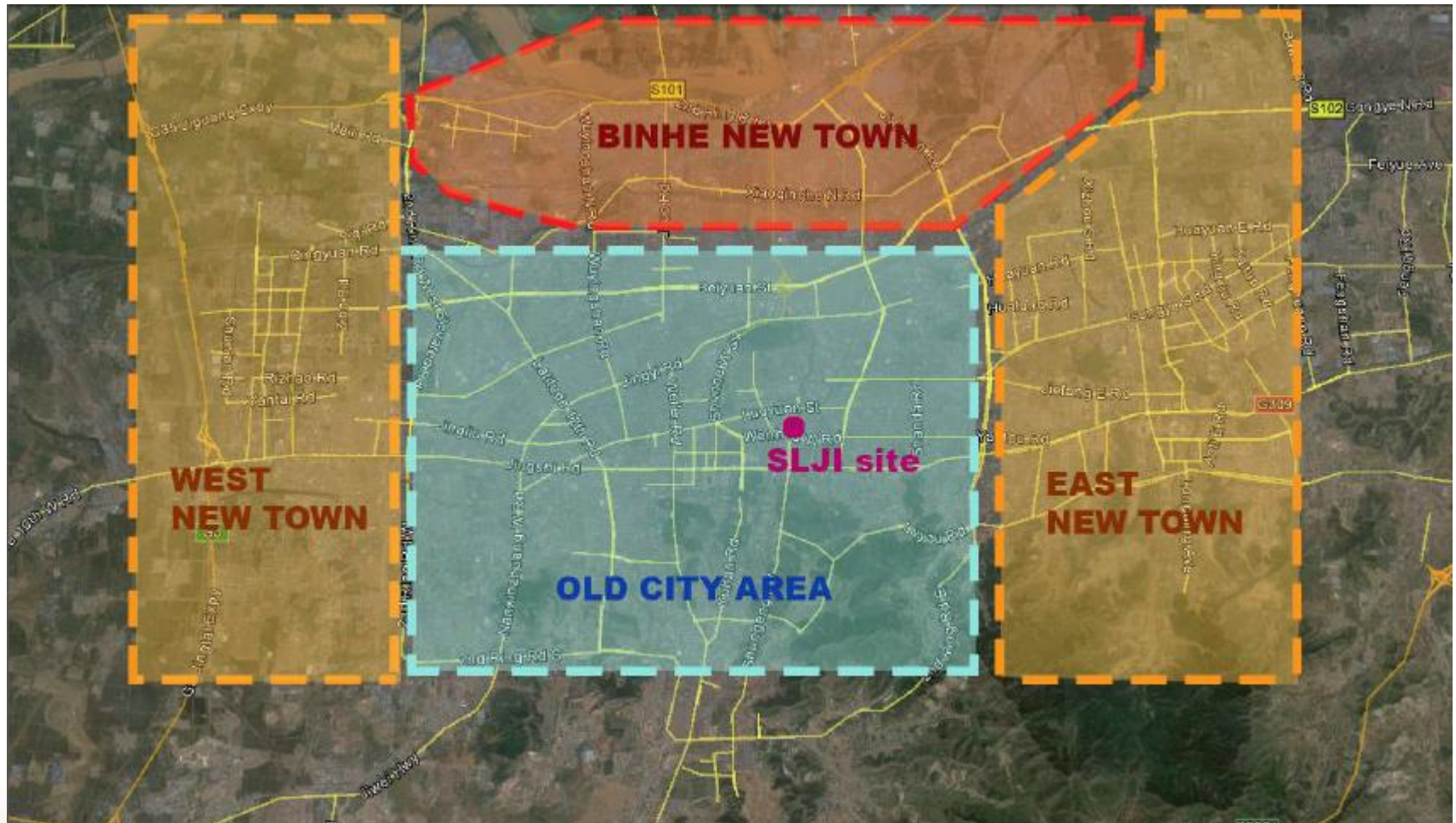
Along with the Buddha statues, temples and other buildings were erected on the hill. The most renowned of these structures is the Xingguochan Temple



### **Xingguochan Temple**



# Shangri-La in Prime Location



The Shangri-La hotel location remains a prime location in the traditional central business district, with good accessibility to the new towns in the east, west and north.

# Hotel Location

View of Spring City Plaza from 5<sup>th</sup> Hotel Tower



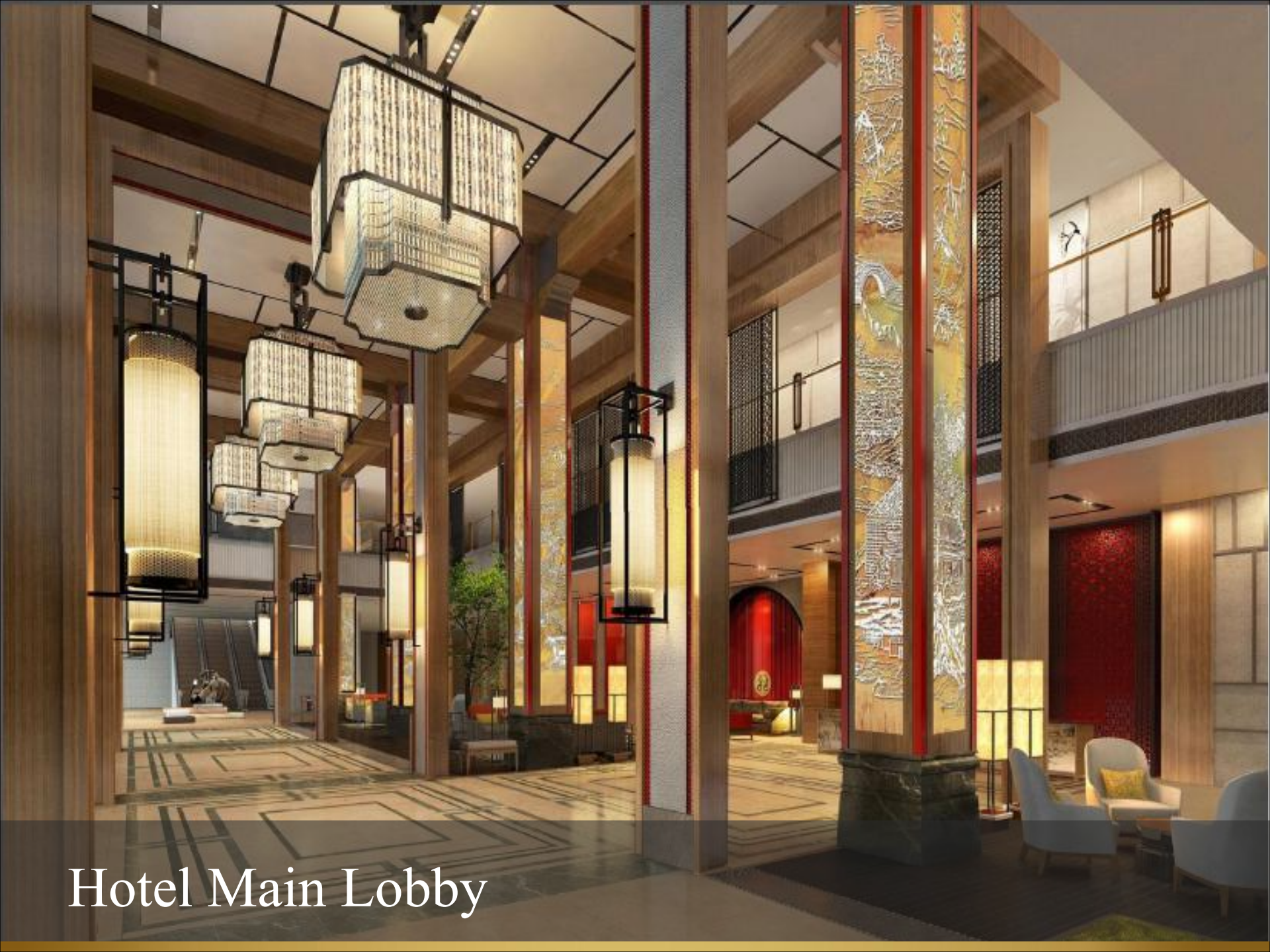
View of Hotel and Office from  
Spring City Plaza





Hotel Exterior





Hotel Main Lobby



Deluxe Room





Deluxe Room



Deluxe Suite— Living Room





Deluxe Suite— Living Room



Deluxe Suite— Bathroom





Service Apartment – Living Room



Service Apartment – Bedroom



# Rooms and Suites

	Number of Rooms	Area (m²)
DELUXE	220	42
HOLLYWOOD TWIN	30	42
EXECUTIVE	44	50
HORIZON DELUXE	48	42-50
EXECUTIVE SUITE	18	84
DELUXE SUITE	4	126
APARTMENT - STUIO	4	42
APRTMENT - 2 BAY UNIT	28	84-98
TOTAL	396	



Cafe Spring— Entrance

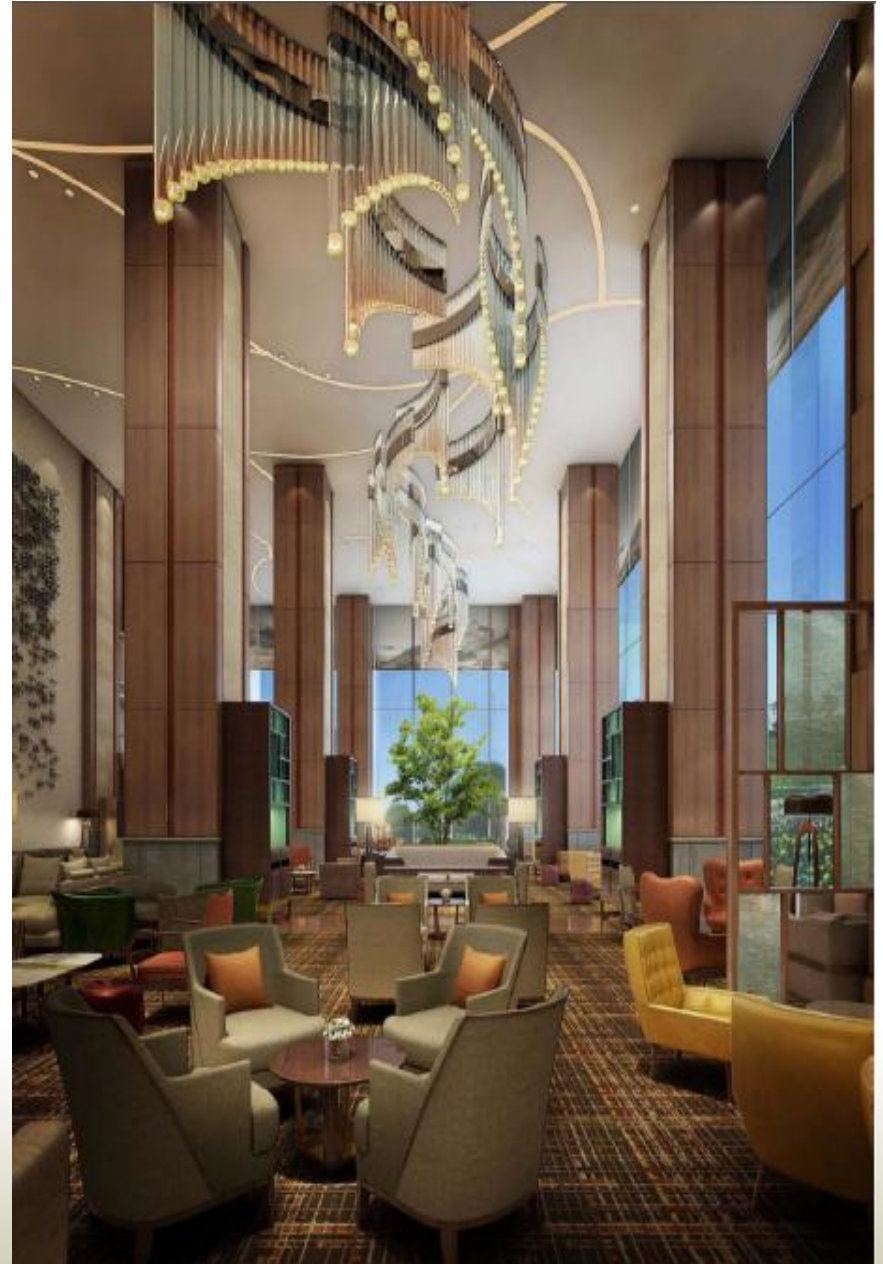




Cafe Spring— Centre Island

# Lobby Lounge

- A stylish meeting point offering the best drink selection, coffees, Chinese tea and pastries in town, in an elegant, relaxed ambience







Horizon Lounge





Horizon Lounge





## Health and Recreation

The impressive health and recreation facilities include a state-of-the-art gymnasium, a 25-metre indoor heated swimming pool, Jacuzzi, sauna, steam bath and The Spa



Health Club - GYM





Grand Ballroom





Pre-Function to GBR





Junior Ballroom





Function Room



# Meetings & Events

- The largest hotel meeting and banqueting facilities in Jinan, spreading over 2 floors, and a total of over 3,200 square meters.
- At 8 meters high and a total pillar-less space of 1,400 square meters, the Qilu Grand Ballroom is the largest in town. Divisible into 3 smaller ballrooms, and with access to outdoor terrace.
- An additional Jinan Junior Ballroom with 480 square meters and 10 function rooms of various sizes, some of which provide natural daylight, offer flexible meeting arrangements, and catering to all different occasions.

# Capacity of Grand Ballroom and Function Rooms

Venue	Reception	Theater	Banquet	Classroom	Dimension	SQM	Ceiling Height (M)
<b>3rd Floor</b>							
Jinan Ballroom	400	450	320	280	30 X 16	480	4.5
Jinan 1	180	220	150	120	15 X 16	240	4.5
Jinan 2	180	220	150	120	15 X 16	240	4.5
<b>Function room</b>							
Baotu	60	60	30	50	9.2 X 8.8	80	4.5
Huanghua	60	60	30	50	9.2 X 8.8	80	4.5
Baimai	50	50	30	40	8.5 X 8.8	75	4.5
Zhenzhu	50	50	20	30	13.2 X 5.3	70	4.5
Furong	70	70	40	60	10.8 X 9.3	100	4.5
Ganlu	70	70	40	60	10.8 X 9.3	100	4.5
Wulong	70	70	40	60	10 X 10	100	4.5
Yuhua	70	70	40	60	9.1 X 11	100	4.5
<b>4th Floor</b>							
Pre Function Area	400				57 X 8	456	7.8
Qilu Ballroom	1,400	1,500	900	850	57 X 24	1,368	7.8
Qilu 1	400	450	280	260	19 X 24	456	7.8
Qilu 2	400	450	280	260	19 X 24	456	7.8
Qilu 3	400	450	280	260	19 X 24	456	7.8
<b>Function room</b>							
Shengxian Tang	70	70	40	60	9.5 X 10.5	100	4.5
Junhe Yuan	80	80	50	60	13 X 9.1	120	4.25



Coco Zheng  
Senior Sales Manager

Phone

0531-55583300; (0)15254109609

Wechat: 15254109609



Address

No. 102 Luoyuan Street, Lixia  
District, Jinan, Shandong, China





濟南香格里拉大酒店  
Shangri-La hotel

---

JINAN

Thank You