



丽江金茂璞修雪山酒店

JINMAO PURELAX MOUNTAIN HOTEL, LIJIANG



1 大堂 Lobby
7018 - 7019
雪景阁 The Lodge
7021 - 7023

2 会议室 Events
6020 - 6023
7025 - 7028

南苑 South Villas
3 - 10

11 焕水疗 Spa
6110 - 6116

北苑 North Villas
12 - 23
8992 - 8998



丽江金茂璞修雪山酒店由全套房及别墅组成，位于玉龙雪山东麓海拔3100米的甘海子草甸区，紧邻有双吉尼斯纪录美誉的雪山高尔夫球会，距离大研古城28公里。秉承隐秘奢华理念，打造自然闲适、灵动安逸的传统文化居所，是感受和体验世纪冰川凜冽之美的最佳场地。

All-suite Jinmao Purelax Mountain Hotel Lijiang nestles on the lower slopes of Jade Dragon Snow Mountain in Ganhaizi, 3,100 metres above sea level and nearby the double Guinness record holding golf club, 28km away from Dayan old town location. Designed for maximum comfort and with strong local cultural heritage, it offers the best view and experience of the beauty of century-old glaciers.



酒店大堂
Hotel Lobby



客房 GUEST ROOM

雪山酒店共有89间套房及别墅，推窗即直面一望摄魄的180度绝美雪山冰川景观。

The Mountain Lodge has 89 suites and villas, including suites and villas, all of which offer a spectacular 180-degree view of the magnificent snow-white beauty .

客房 GUEST ROOM

雪山酒店由全套房及别墅组成，为您打造避世养心秘境。

Designed for maximum comfort and with strong local cultural heritage, it offers the best view and experience of the beauty of century-old glaciers.

房型	Room Type	Area 面积	Quantity 数量
璞修雪山套房 - 大床房	Mountain Grand Suite - King	86sqm	44
璞修雪山套房 - 双床房	Mountain Grand Suite - Twin	86sqm	26
璞修雪山行政套房 – 大床房	Mountain Executive Suite – King	134sqm	13
璞修雪山单卧别墅	One bedroom Mountain Villa	194sqm	4
璞修雪山双卧别墅	Two bedrooms Mountain Villa	243sqm	2
合计	Total	/	89



璞修雪山套房 - 大床房
Mountain Grand Suite - King



璞修雪山套房 - 双床房
Mountain Grand Suite - Twin



卧室阳台
Room of balcony



雪景阁

The Lodge Restaurant



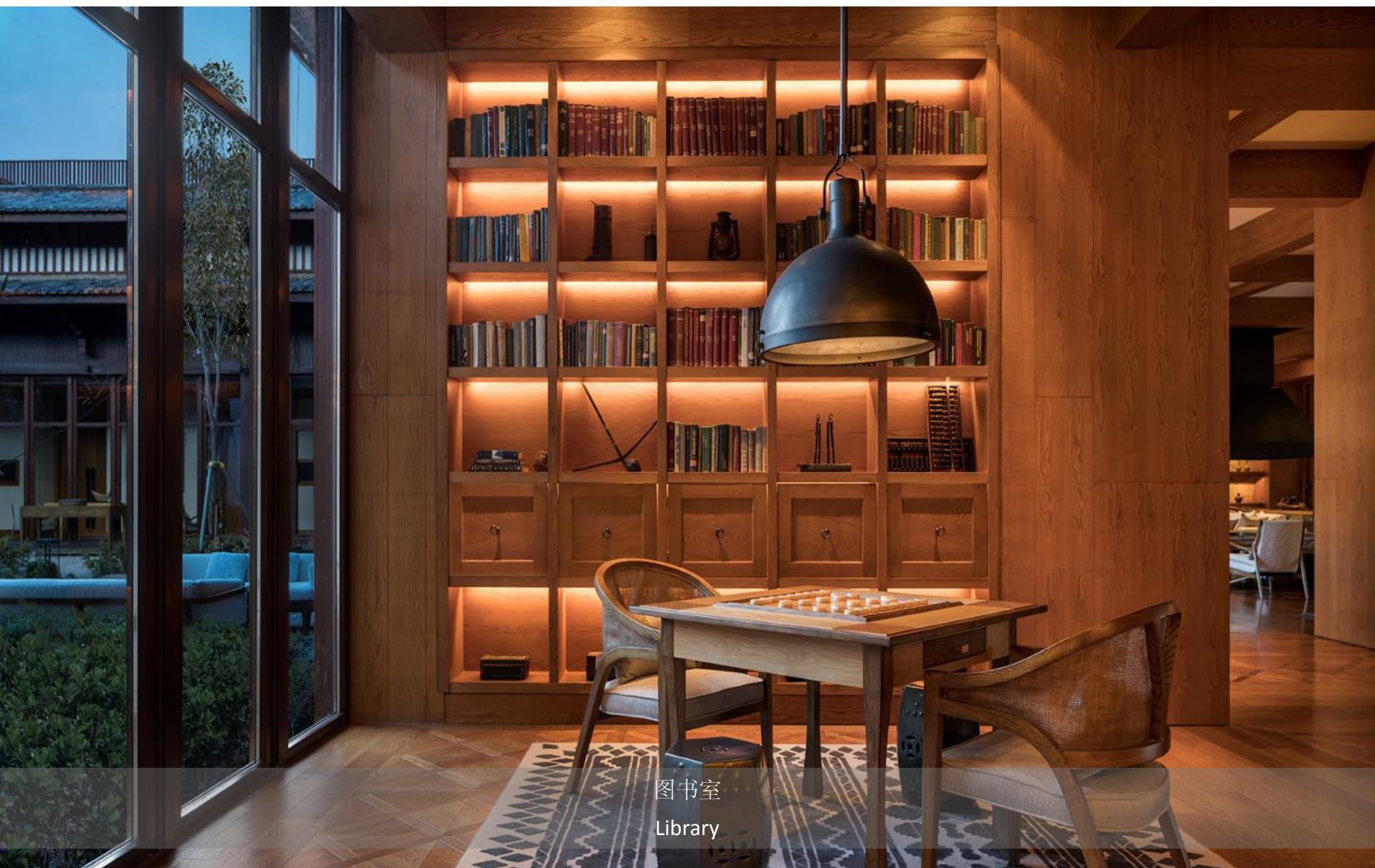
雪景阁餐厅包厢

The Lodge Private Dining Room



雪景阁集餐厅和酒吧为一体，融汇传统中式美食、特色下午茶和国际经典美馐，满足食客的不同味蕾需求。在享受云端美食或休憩雅叙的同时，还可于室内外尽情饱览不同时段的玉龙冰雪奇观。

The Lodge is a restaurant and bar that offers traditional Chinese cuisines, specialty afternoon tea sets and classic international favourites to cater to the taste buds of travellers around the world. Dine in the clouds with the backdrop of a relaxing landscape and enjoy a visual feast with the Jade Dragon Snow Mountain.



图书室
Library



焕水疗由六间理疗套房组成，融合东、西方的传统身心护理哲学，强调反朴归真及与大自然融汇，由经验丰富的专业治疗师提供传统自然疗法及全面焕新疗程；再加上健身房、舒缓泡池及瑜伽平台，客人可在天然氧吧之中达到身心深层净化。Huan SPA, together with gym, indoor heated pools and yoga platforms will provide instant relaxation and energise your body through various challenging exercises.

活动及会议设施

EVENT & MEETING FACILITIES

设施 Facilities	面积 Area	长宽高 L*W*H	课桌式 C/R	剧院式 Theatre	宴会式 BQT	U型 U shape	回字型 H/S	董事会 B/R	酒会 Cocktail
Salon 1+2 沙龙1+2	87.78	15.4*5.7*3.4	48	77	40	39	48	42	87
Salon 1 沙龙1	37	6.5*5.7*3.4	18	28	16	15	18	12	37
Salon 2 沙龙2	50	8.8*5.7*3.4	24	42	20	21	24	18	50
Salon 5 沙龙5	90.75	12.1*7.5*3.4	45	99	50	36	42	30	90
Salon 6 沙龙6	51.75	6.9*7.5*3.4	18	44	20	18	24	12	51
Salon 7 沙龙7	57.75	7.7*7.5*3.4	27	55	30	18	24	18	57
Salon 8 沙龙8	57.75	7.7*7.5*3.4	27	55	30	18	24	18	57
Salon 7+8 沙龙7+8	115.5	15.4*7.5*3.4	72	121	70	42	54	42	115
Salon terrace 沙龙平台	192	32*6	/	/	60	/	/	/	190
Yoga terrace 瑜伽平台	60	10*6	/	/	24	/	/	/	50
Outdoor Theatre 户外剧场	200	直径16	/	/	/	/	/	/	/
Lodge terrace 雪景阁露台	144	16*9	/	/	/	/	/	/	/



沙龙 -- 会议室
Salon – Meeting Room



6间不同规格的室内外多功能会议空间称为沙龙， 配备无线高速网络和先进视听设备，专业的会议管家和优秀的宴会餐饮服务团队，将以其殷勤周到的服务为与会者带来难忘的商旅体验。

Six indoor multifunctional conference rooms, all of which are equipped with high speed Wi-Fi and advanced visual and audio equipment. Our professional conference and events service team is at your service to deliver the most thoughtful services that will ensure the most memorable business travel experience.



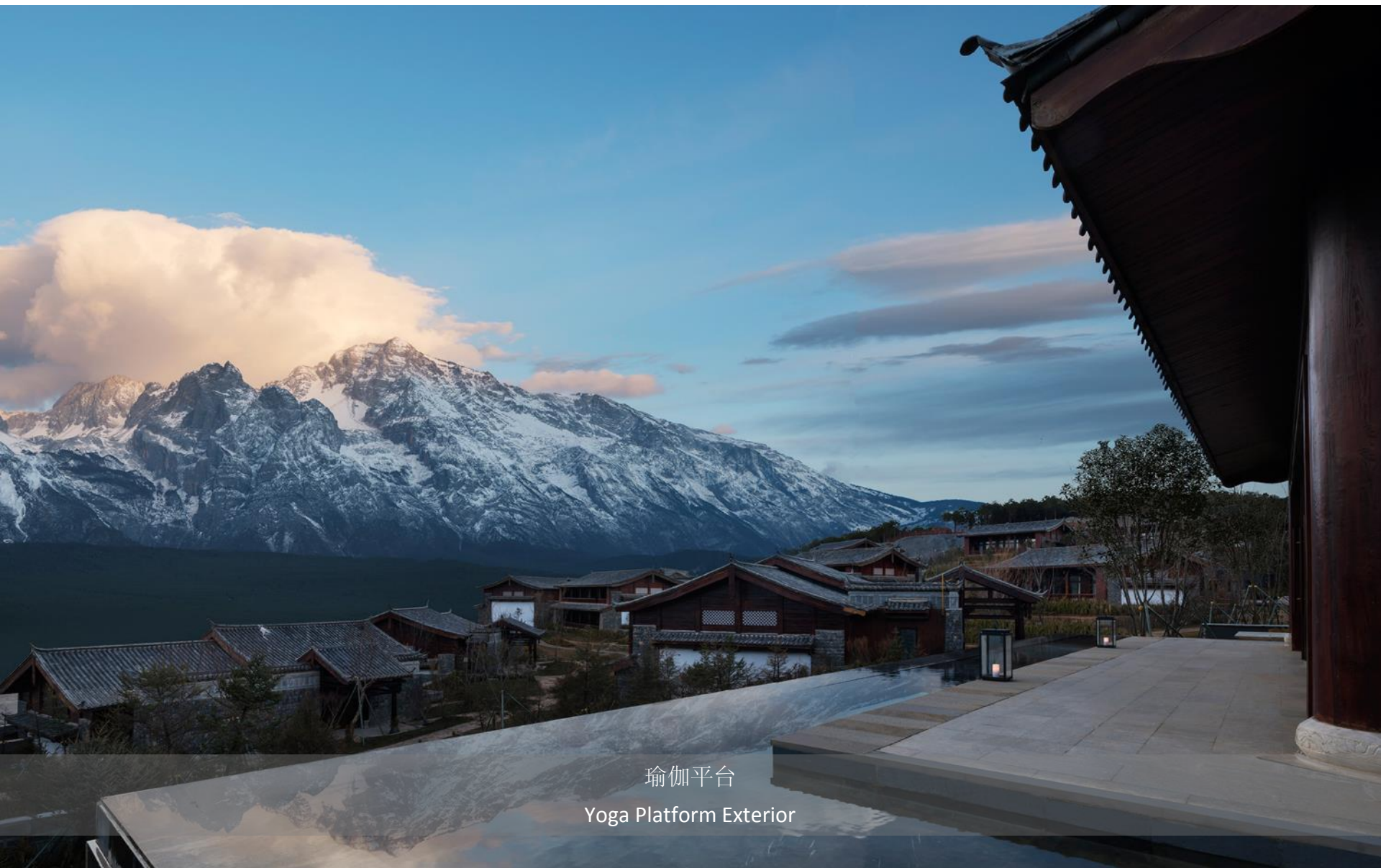
沙龙庭院平台 -- 鸡尾酒桌摆设
Salon Courtyard -- Cocktail Setup



户外露天剧场
Outdoor Theatre Space



瑜伽平台
Yoga Platform



瑜伽平台
Yoga Platform Exterior



金茂璞修雪山酒店科技馆

Jinmao Purelax Snow Mountain Science Museum



星迹旅客天文台 -- 金茂璞修观测站

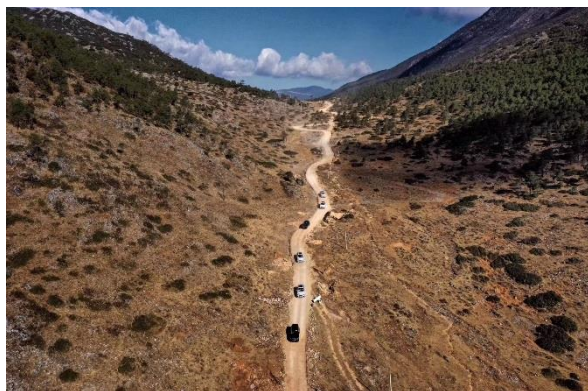
Star Traveler Observatory – Jinmao Purelax Observation Station



活动展示
Activities Show



活动展示
Activities Show



活动展示
Activities Show



关于丽江 ABOUT LIJIANG

当地介绍
Destination Introduction

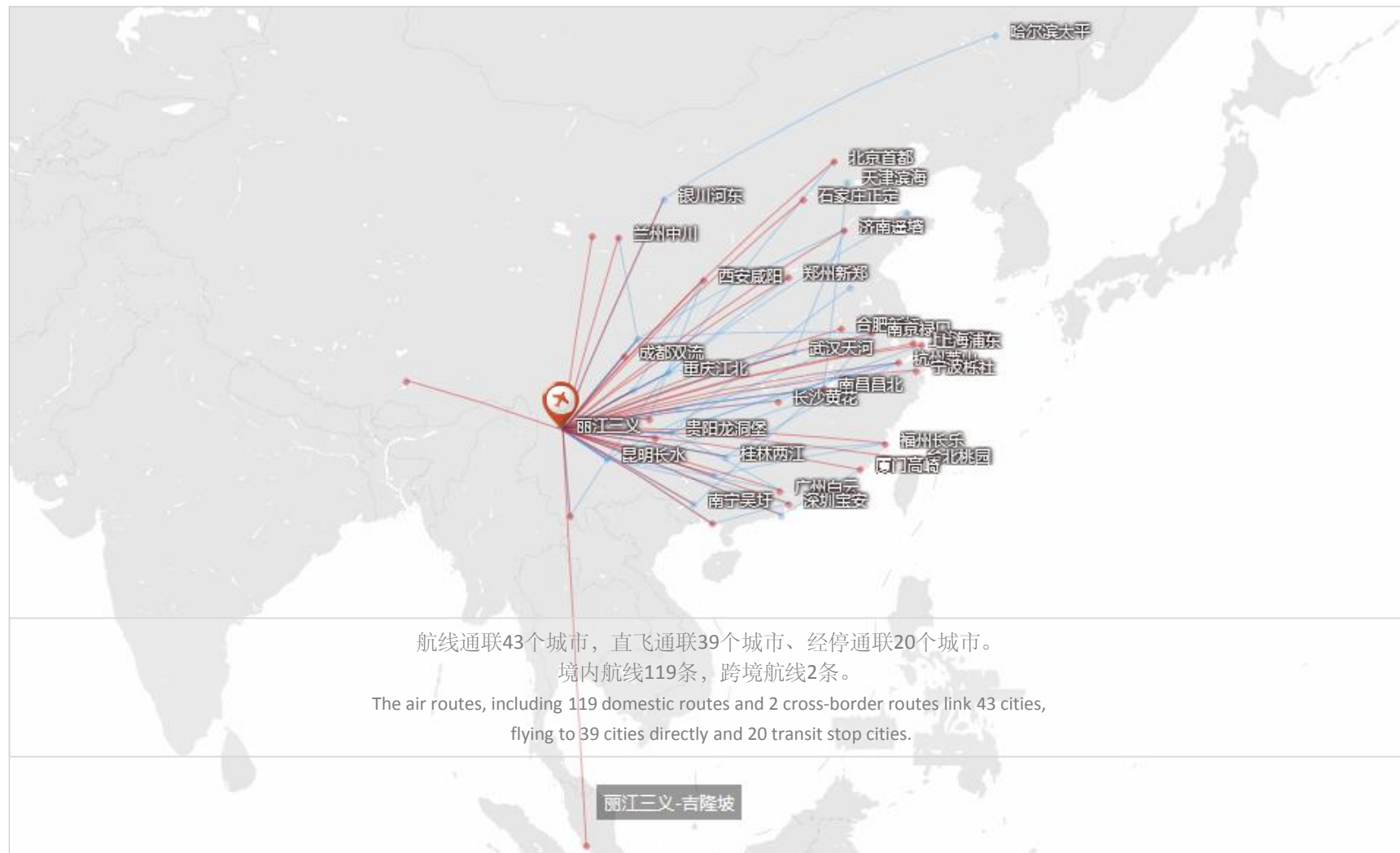


忘却时光之地 -- 丽江以其璀璨的民族文化和壮丽秀美的自然风光而著称。古朴典雅的纳西民居、亦动亦静的丽江古城，悦耳动听的纳西古乐，神秘悠长的茶马古道，心旷神怡的玉龙雪山美景，是自然与人文双重魅力的完美融合。

Lijiang, praised as a place where time stops, is known for its brilliant ethnic culture and splendid natural scenery. In this place inhabited by unsophisticated and kind Naxi people and endowed with ancient streets and buildings, time-honoured Naxi ancient music, ancient tea routes, and the beautiful Jade Dragon Snow Mountain.

航班信息

Flight Information





丽江的天气 Weather of Lijiang

丽江气候属低纬度高原季风气候，阳光充足，紫外线强，冬季干燥，夏季凉爽。气温年温差小，单日早晚温差大。

Lijiang climate is low latitude plateau monsoon climate, sunny, strong ultraviolet radiation, dry in winter, cool in summer. The temperature difference is small in annual temperature, and the temperature difference is big in the morning and evening.

- 丽江春天（3月-5月）：气温约5℃-20℃，以晴天为主，天气微寒；
- 丽江夏天（6月-8月）：气温约13℃-26℃，多雨，白天户外直晒较热，室内凉爽；
- 丽江秋天（9月-11月）：气温约12℃-23℃，少雨，天气清凉；
- 丽江冬天（12月-2月）：气温约3℃-15℃，气温较低，空气干燥，绝大多数情况下是晴天；
- Spring(March – May) : 41°F-68°F, mainly clear sky;
- Summer(June – August) : 50°F-78.8°F, rainy;
- Autumn(September – November) : 41°F-73.4°F;
- Winter(December – February) : 32°F-59°F, dry air and mainly clear sky;

著名景点

Tourism Attractions



束河古镇
Shuhe Old Town



丽江古城
Lijiang Old Town



拉市海
Lashi Lake

25公里，乘车33分钟
25KM, 33min by car

3公里，乘车10分钟
3KM, 10min by car



玉龙雪山
Jade Dragon Snow Mountain



白沙古镇
Baisha Old Town



玉湖村
Yuhu Village

28公里，乘车48分钟
28KM, 48min by car

20公里，乘车27分钟
20KM, 27min by car

38公里，乘车57分钟
38KM, 57min by car

19公里，乘车30分钟
38KM, 57min by car

探索本地文化

Local Culture Exploring



东巴祈福



东巴造纸



学写东巴文字



手鼓体验



坛城沙画



土陶体验

丽江金茂璞修雪山酒店

JINMAO PURELAX MOUNTAIN HOTEL, LIJIANG

中国云南省丽江市玉龙雪山景区甘海子东坡(近丽江玉龙雪山高尔夫球会) 邮编674100

Ganhaizi of Jade Dragon Snow Mountain, Lijiang, Yunnan, PRC 674199

电话 TEL +86 (0) 888 531 1234

