

探索之旅

THE JOURNEY OF DISCOVERY

Le MERIDIEN
XIAMEN

厦门艾美酒店

N 24° 30' E 118° 5'

HOTEL OVERVIEW 酒店全景



Le **MERIDIEN**
XIAMEN

厦门艾美酒店

N 24° 30' E 118° 5'

HOTEL OVERVIEW 酒店全景



Le **MERIDIEN**
XIAMEN

厦门艾美酒店

N 24° 30' E 118° 5'

HOTEL MAIN ENTRANCE 大堂入口



Le MERIDIEN
XIAMEN
厦门艾美酒店

N 24° 30' E 118° 5'

ARTWORK ON THE DOOR 门面艺术



Le MERIDIEN
XIAMEN

厦门艾美酒店

N 24° 30' E 118° 5'



LOBBY 大堂

Le MERIDIEN
XIAMEN
厦门艾美酒店

DELUXE TWIN BED ROOM 豪华房双床房

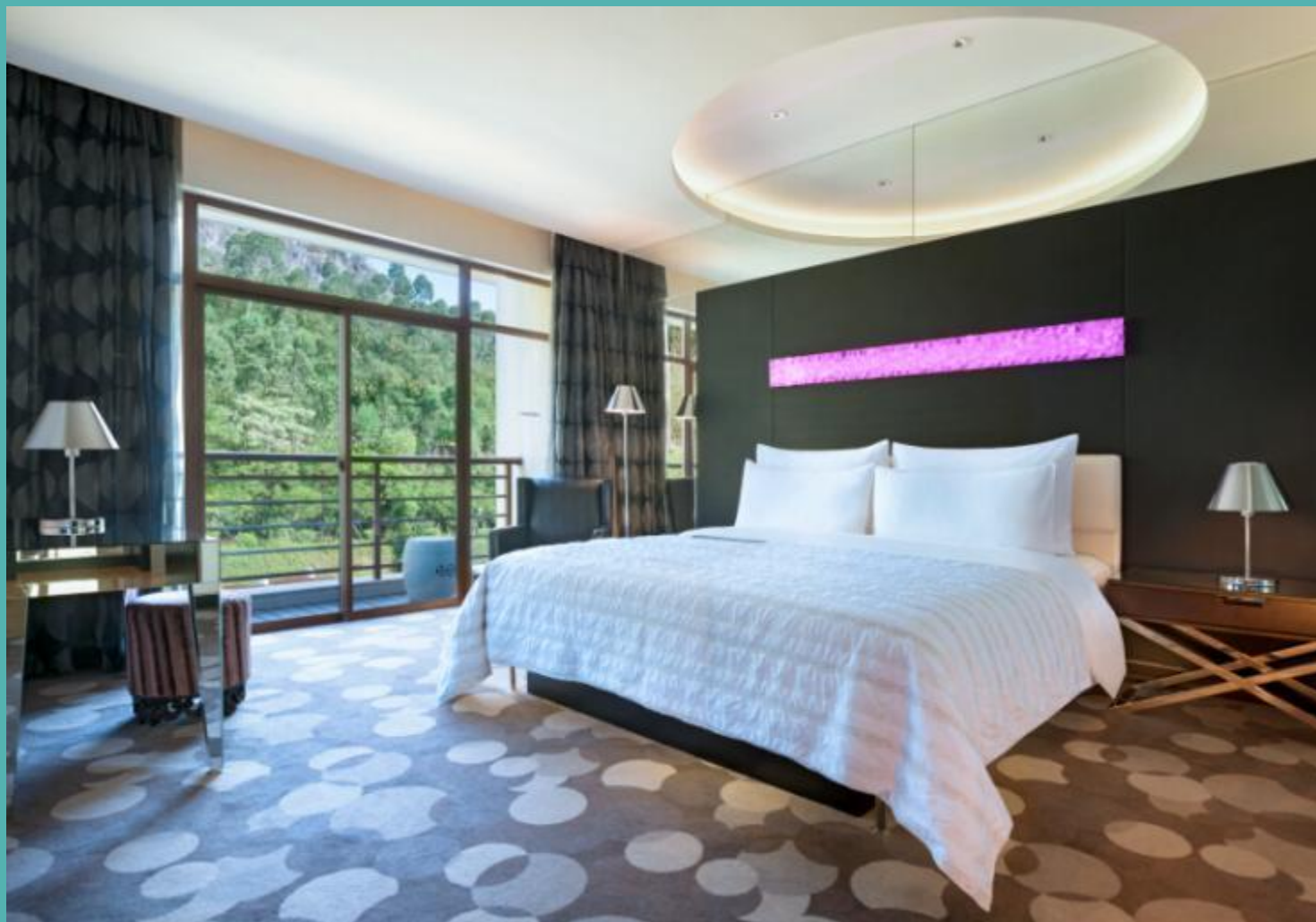


Le MERIDIEN
XIAMEN

厦门艾美酒店

N 24° 30' E 118° 5'

JUNIOR SUITE – BEDROOM 高级套房 – 卧室



Le MERIDIEN
XIAMEN

厦门艾美酒店

N 24° 30' E 118° 5'

DIPLOMAT SUITE – LIVING ROOM 豪华套房 – 客厅



Le MERIDIEN
XIAMEN
厦门艾美酒店

N 24° 30' E 118° 5'

PRESIDENTIAL SUITE - BEDROOM 总统套房 - 卧室



Le MERIDIEN
XIAMEN

厦门艾美酒店

N 24° 30' E 118° 5'

PRESIDENTIAL SUITE – LIVING ROOM 总统套房 – 客厅



Le MERIDIEN
XIAMEN

厦门艾美酒店

N 24° 30' E 118° 5'

HILL VILLA 山景別墅



Le MERIDIEN
XIAMEN

厦门艾美酒店

N 24° 30' E 118° 5'

LE MERIDIEN CLUB LOUNGE 艾美行政楼层酒廊



Le MERIDIEN
XIAMEN

厦门艾美酒店

N 24° 30' E 118° 5'

LE MERIDIEN CLUB LOUNGE 艾美行政楼层酒廊



Le **MERIDIEN**
XIAMEN

厦门艾美酒店

N 24° 30' E 118° 5'

LATEST RECIPE – ALL DAY DINING RESTAURANT

新食谱—全日制餐厅



Le **MERIDIEN**
XIAMEN

厦门艾美酒店

N 24° 30' E 118° 5'

LATEST RECIPE – ALL DAY DINING RESTAURANT

新食谱—全日制餐厅



Le **MERIDIEN**
XIAMEN
厦门艾美酒店

N 24° 30' E 118° 5'

LE MEI - CHINESE RESTAURANT 乐美—中餐厅



Le **MERIDIEN**
XIAMEN

厦门艾美酒店

N 24° 30' E 118° 5'

LE MEI - CHINESE RESTAURANT (PRIVATE ROOM) 乐美—中餐厅(包间)



Le MERIDIEN
XIAMEN

厦门艾美酒店

N 24° 30' E 118° 5'

LATITUDE 24° - LOBBY LOUNGE 北纬24大堂吧



Le **MERIDIEN**
XIAMEN

厦门艾美酒店

N 24° 30' E 118° 5'

GRAND BALLROOM-GALA DINNER 艾美宴会厅 -晚宴式



Le MERIDIEN
XIAMEN

厦门艾美酒店

N 24° 30' E 118° 5'



GRAND BALLROOM-CLASSROOM

艾美宴会厅 -课桌式

Le MERIDIEN
XIAMEN

厦门艾美酒店

SUMMIT BALLROOM 悦美宴会厅



Le MERIDIEN
XIAMEN

厦门艾美酒店

N 24° 30' E 118° 5'

MEETING 会议



Le **MERIDIEN**
XIAMEN

厦门艾美酒店

N 24° 30' E 118° 5'

MEETING ROOM 会议室



Le MERIDIEN
XIAMEN

厦门艾美酒店

N 24° 30' E 118° 5'

GRAND BALLROOM FOYER 艾美宴会长廊



Le MERIDIEN
XIAMEN

厦门艾美酒店

N 24° 30' E 118° 5'



COURTYARD
GARDEN 中庭花园

Le MERIDIEN
XIAMEN

厦门艾美酒店

COURTYARD GARDEN-SEATING AREA 中庭花园—座位区



Le MERIDIEN
XIAMEN

厦门艾美酒店

N 24° 30' E 118° 5'



COURTYARD GARDEN-
LONG TABLE DINNER中
庭花园—长桌晚宴

Le MERIDIEN
XIAMEN

厦门艾美酒店

SWIMMING POOL游泳池



Le MERIDIEN
XIAMEN

厦门艾美酒店

N 24° 30' E 118° 5'

FITNESS CENTRE 健身中心



Le MERIDIEN
XIAMEN

厦门艾美酒店

N 24° 30' E 118° 5'

TENNIS COURT

网球场



Le MERIDIEN
XIAMEN

厦门艾美酒店

N 24° 30' E 118° 5'

SERVICES & FACILITIES 服务与设施

- ◆ Fitness Centre 康乐中心
- ◆ Tennis Court 网球场
- ◆ Jogging and Hiking Trail 慢跑及登山通道
- ◆ Indoor Heated Swimming Pool 室内常温泳池
- ◆ Spa 水疗
- ◆ Le Meridien Club Lounge 行政楼层
- ◆ Full-Service Business Centre 商务中心
- ◆ Wireless Internet Access in Hotel Public Areas
酒店公共区域无线网络
- ◆ Lobby Shop 精品商店
- ◆ Airport Limousine Services
机场豪华轿车服务
- ◆ Multilingual Concierge Service
多国语言礼宾服务
- ◆ Dry Cleaning, Laundry & Pressing Services
洗涤熨烫服务



UNIQUE SELLING POINTS 独特亮点

- ◆ City resort concept offering open green surrounding and lush vegetation
葱绿茂盛树林中的城市度假村
- ◆ Pillar less ballroom with 10 m high ceiling
挑高10米无立柱宴会厅
- ◆ Distinguished Le Meridien brand and culture 艾美优质品牌与文化
- ◆ Arrival Experience: Artwork on the door + LM01 + Unlock Art + A New Wave” –新潮律动” -24小时酒店音乐原声带
抵达体验: 门面艺术+感官体验+释放艺术魅力+电梯体验
- ◆ Chic Cuisine: Coffee Culture + Signature Breakfast + Signature Restaurant Concepts+ Eclair +Sparkling
别致美食: 咖啡文化+特色早餐+特色餐厅理念+手指泡芙+汽泡酒



ROOMS 客房

◆ Le Meridien Xiamen Rooms Configuration :

◆ 厦门艾美酒店客房结构图：

HOTEL ROOM TYPE 客房房型	NO. OF ROOMS 房间数	SIZE 面积 (m2)
SUPERIOR HILLSIDE OR COURTYARD VIEW 山景 高级房/庭景高级房	145	36
DELUXE HILLSIDE OR COURTYARD VIEW 山景豪华房/庭景豪华房	118	36
LE MERIDIEN CLUB ROOM 皇家行政房	39	36
JUNIOR SUITE HILLSIDE OR COURTYARD 山景高级套房或庭景高级套房	22	72
DIPLOMAT SUITE 豪华套房	3	108
PREMIER SUITE 至尊套房	2	144
PRESIDENTIAL SUITE 总统套房	1	216

ROOMS 客房

◆ Le Meridien Xiamen Villas Configuration :

◆ 厦门艾美酒店别墅结构图：

HILL VILLA ROOM TYPE 别墅房型	NO. OF ROOMS 房间数	SIZE (m2) 面积
VILLA DELUXE ROOM 豪华别墅房	4	45-51
VILLA SUITE 别墅套房	2	77
SUPERIOR VILLA SUITE 高级别墅套房	3	97
DELUXE VILLA SUITE 豪华别墅套房	1	133
LUXURY VILLA SUITE 艾美别墅套房	2	177

Our Conference Centre 我们的宴会中心

MEETING ROOMS 会议设施	SIZE (m2) 面积 (平方米)	CEILING HEIGHT (m) 高度 (米)	CLASSROOM 课桌式	THEATRE 剧院式	BANQUET 宴会式
Grand Ballroom 艾美宴会厅	850	10	516	680	500
Grand Ballroom 1 艾美宴会厅1	604	10	330	430	310
Grand Ballroom 2 艾美宴会厅2	246	10	129	180	130
Summit Ballroom 悦美宴会厅	319	3.1	156	210	160
Meeting Room 1 会议室1	52	2.6	27	40	20
Meeting Room 2 会议室2	60	2.6	27	40	20
Meeting Room 3 会议室3	85	2.6	48	60	30
Meeting Room 4 会议室4	66	2.6	36	45	20
Meeting Room 5 会议室5	56	2.6	27	40	20
Meeting Room 6 会议室6	56	2.6	27	40	20
VIP Room 1 贵宾室1	49				
VIP Room 2 贵宾室2	38				

Discover GULANGYU 探索鼓浪屿

Sunlight Rock, Shuzhuang Garden, Bright Moon Garden, Seabed World, Yu Park, Gulang Stone, Natural Bathing Beach are amongst the main scenic spots on the island with an area covering 1.87 square kilometers. Owing to historical aspects , the island comprises of former consulates of 13 countries, and among them Britain, USA, Japan; churches, residences, foreign firms, schools that were built by missionaries and wealthy merchants from various countries.

面积1.87平方公里的鼓浪屿岛上集中了日光岩、菽庄花园、皓月园、海底世界、豫园、鼓浪石，天然浴场等众多景点。鼓浪屿保留了历史上13个国家设立的领事领事公馆，以及教堂、医院、学校等一批纯正的欧式建筑，由此又被称为“万国建筑博物馆”。



Le MERIDIEN
XIAMEN

厦门艾美酒店

Discover GULANGYU 探索鼓浪屿



DISCOVERY

Gulangyu is rated as an AAAA-national scenic and popular resort of the country. The island is located at the southwest corner of Xiamen, fronting the Xiamen Island across 500-meter-wide Egret River. Its surrounding sea constitutes the main body of Xiamen Port, with Chinese white dolphins (Indo-Pacific humpback dolphins) Conservation Area, lancelets Conservation Area and Dayu Island Egrets Conservation Area nearby, and Kinmen Isles across the sea.

鼓浪屿是国家4A级旅游景区，地处厦门市的西南角，隔着500米宽的鹭江与厦门岛隔江相望。鼓浪屿面对台湾金门岛，四周被由中华白海豚保护区、蜗蛎鱼保护区、白鹭保护区等多个保护区组成的厦门港环绕。

Le MERIDIEN
XIAMEN

厦门艾美酒店

Discover GULANGYU 探索鼓浪屿

ARCHITECTURAL AND ARTISTIC PERPECTIVE

On this small island, buildings of different styles and architecture of Foreign and Chinese are found well integrated and preserved, hence the name of "World Architecture Museum". "Gulang Piano Festival" held every two years, annual "American Music Week" and "Mid-autumn Mooncake Game Festival" have known to be the draw card that attract overseas tourists.

建筑艺术风貌

鼓浪屿岛上，风格迥异的中式和西式建筑，相得益彰，保留完整，也由此被称为“万国建筑博物馆”。两年一届“鼓浪屿钢琴节”，一年一度的“美国音乐周”和“中秋博饼”，都是吸引海内外游人的活动盛事。



Le MERIDIEN
XIAMEN

厦门艾美酒店

Discover GULANGYU – EYES VIEW OF ISLAND

探索鼓浪屿 – 鸟瞰鼓浪屿



Le **MERIDIEN**
XIAMEN

厦门艾美酒店

Discover TULOU - The Most Extraordinary Chinese Rural Dwellings

探索土楼 – 不同寻常的传统中式农村建筑



DISCOVER

Fujian Tulou were mostly built between the 12th and the 20th centuries. A total of 46 Fujian Tulou sites, including Chuxi tulou cluster, Tianluokeng tulou Cluster, Hekeng tulou cluster, Gaobei tulou cluster, Dadi tulou cluster, Hongkeng tulou cluster, Yangxian lou, Huiyuan lou, Zhengfu lou and Hegui lou, have been inscribed in 2008 by UNESCO as World Heritage Site, as "exceptional examples of a building tradition and function exemplifying a particular type of communal living and defensive organization in a harmonious relationship with their environment".

福建土楼多修建在12世纪到20世纪之间，包括了初溪土楼群、洪坑土楼群，田螺坑土楼群、河坑土楼群，大地土楼群等46座土楼。2008年，福建土楼入选世界文化遗产名录，中国“福建土楼”的奇特之处，恰恰蕴含在一种平实的、平民的生活中，既满足了现代生活的便利，又完整地保留着客家人的生活方式和生活理念。

Le MERIDIEN
XIAMEN

厦门艾美酒店

Discover Tulou 探索土楼



The end result is a well lighted, well-ventilated, windproof and earthquake-proof building that is warm in winter and cool in summer. Tulous usually have only one main gate, guarded by 4-5 inch thick wooden doors reinforced with an outer shell of iron plate. The top level of these earth buildings has gun holes for defensive purposes.

土楼光线充足，通风良好，防风抗震，冬暖夏凉。大部分土楼只有一个大门，门厚达4-5英寸，再由铁片加固。从防御工事方面考虑，土楼顶层都有防御洞。

EXPLORE

The fortified outer structures are formed by compacting earth, mixed with stone, bamboo, wood and other readily-available materials, to form walls up to six feet (×2m) thick. Branches, strips of wood and bamboo chips are often laid in the wall as additional reinforcement.

牢固的外墙结构由粘土混合石块、竹子、木块和其他可用的材料，筑成约2米厚的墙体。为了进一步加固墙体，墙体外还常用支柱、木条和竹片支撑。



Le MERIDIEN
XIAMEN

厦门艾美酒店

Discover Tulou - ARCHITECTURAL PERPECTIVE

探索土楼 – 建筑特色

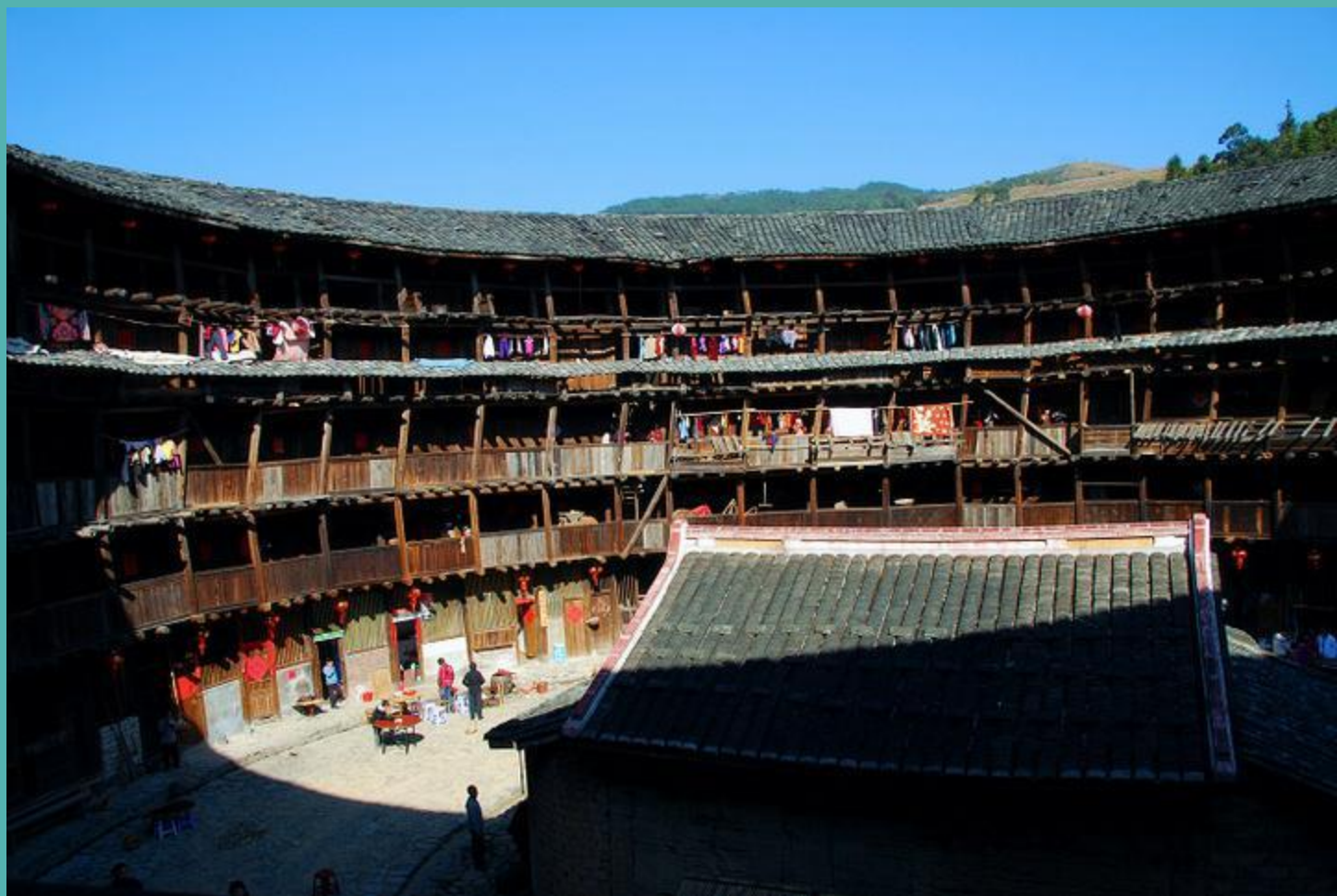


Le MERIDIEN
XIAMEN

厦门艾美酒店

Discover Tulou – A DIFFERENT PERSPECTIVE

探索土楼 – 另类视角



Le MERIDIEN
XIAMEN

厦门艾美酒店

N 24° 30' E 118° 5'



Hotel Official Sina Weibo
酒店新浪官方微博：
厦门艾美酒店



Hotel Official Wechat
酒店微信公众账号：
厦门艾美酒店

Le **MERIDIEN**
XIAMEN

厦门艾美酒店

TO DISCOVER MORE 探索更多.....

No 7, Guanjun Road
Nanshan,
Xiamen City,
Fujian 361006, China.
T +86 592 770 9999
F +86 592 770 9998

厦门艾美酒店
厦门市南山冠军路7号
邮编: 361006
T +86 592 770 9999
F +86 592 770 9998

◆Reservation email & Hotel Webpage:
预定邮箱及酒店网址:

reservation.xiamen@lemeridien.com
www.lemeridien.com/xiamen

N 24° 30' E 118° 5'



Le **MERIDIEN**
XIAMEN
厦门艾美酒店