



PULLMAN KAIFENG
开封建业铂尔曼酒店

開封建業

开封建业铂尔曼酒店

PULLMAN KAIFENG JIANYE



pullman
HOTELS AND RESORTS



开封建业铂尔曼酒店位于北宋古都开封的中心位置，它是融合古今文化的代表作，在传统建筑理念和现代设计风格下，铂尔曼的品牌精神将艺术、历史融合而彰显出整个城市文化底蕴。酒店主体结构理念以中国古代建筑为主，与周围园林景观相得益彰，我们不仅创造一个让人惊艳的艺术品，也打造一个让所有商务或是游客备受礼遇及感受从无所有的清新之旅。

Located in the heart of Kaifeng's ancient capital of Northern Song Dynasty, Pullman Kaifeng Jianye blends cultural touchstones, architectural traditions and contemporary style to reflect the city's compelling culture, history, art and vibrancy of true Pullman. Its structural form ageless ancient Chinese concept of journey and Feel Welcome blends seamlessly with the surrounding lake and abundant landscapes creating a stunning artwork for a refreshing retreat for business and leisure travelers alike.

开封建业铂尔曼酒店介绍 PULLMAN KAIFENG JIANYE INTRODUCTION

在开封建业铂尔曼酒店的每一空间中看似朴实、简单却又不失精致细腻的设计，让您在低调奢华中体验由简单喜悦到深层放松。这样的经验亦延伸到独特的美食烹调 and 贴心呵护的服务风格，再结合营造令人惊奇的景观之旅，让您从感官接触到亲身体验都宛若在世外桃源。

Pullman Kaifeng Jianye's artistry is reflected through-out the hotel creating a homely and refined space filled with the luxury of simple pleasures to encourage deep relaxation. The experience extends to unique culinary and pampering experiences designed to enchant with style, all combined to create a landscape of surprising discoveries, sensory engagement and authentic experiences making it the perfect hideaway.





客房 ROOMS AND SUITES

开封建业铂尔曼酒店提供186间面积从40至400平方米不等的豪华客房和套房。每间房内都可以尽揽以古城为背景交错的湖泊与精致花园所呈现的多样风貌，宛若身处远离喧嚣世界的世外桃源。此外，您还可以在超大温泉风格的大理石浴缸中尽情放松，享用源自美国纽约的C.O.BIGELOW纯天然本草洗护产品，或使用室内免费高速网络与世界随时保持互联，亦或静静地坐下欣赏最新的高清电视。这便是铂尔曼精神“努力工作，尽情玩乐”的最好诠释。

The Pullman Kaifeng Jianye offers 186 luxurious rooms and suites, which vary in size from 40 to 400 m². Sophistication surrounded by panoramic views of the stunning lakes with ancient city in back ground and gardens; guest accommodation provides the perfect modern sanctuary from the urban hustle of modern life. Guests can pamper themselves with large Ofuro style marble tub with luxurious New York C.O.BIGELOW natural herb amenities, high-speed internet access to stay connected or sit back and watch your favorite program on the latest HD TV all in-line with Pullman's "work hard and play hard" concept.



高级大床房Superior King x20	豪华行政双床房Deluxe Executive Twin x5
高级双床房Superior Twin x30	高级套房Superior Suite x11
豪华大床房Deluxe King x48	豪华套房Deluxe Suite x1
豪华双床房Deluxe Twin x43	总统套房President Suite x1
豪华行政大床房Deluxe Executive King x27	





露华轩中餐厅 LU HUA CHINESE RESTAURANT

露华轩中餐厅为您提供了奢华的就餐氛围。在这里，您可以享受到精致粤菜、河南招牌菜、川菜。特色佳肴有品种多样的港式早茶，北方菜品及开封灌汤小笼包和知名小吃，均采用上等新鲜食材制成。精心设计的私人包厢，采用独具匠心的装饰物和精美绝伦的盘子来展现北宋文化及中国历史经典，这里将是您举办专属社交活动的理想之选。

Enjoy exquisite Cantonese cuisine, local Henan signature dishes and Sichuan gourmet food in this opulent atmosphere. Featuring superb dim-sum menu, Northern Chinese specialties, famous Kaifeng dumpling and snacks, every dishes are made with the freshest ingredients of the highest quality. Ideal for distinctive celebrations and exclusive social occasions, each of our private dining rooms are meticulously designed to reflect a Northern Song dynasty with the unique décor and show plates beautifully representing ancient eras of Chinese history.







铂尔曼咖啡厅 PULLMAN CAFÉ

位于酒店一楼的铂尔曼咖啡厅有来自亚洲和世界各地的美食，将为您提供最完美的用餐体验。全天候用餐服务及延伸至户外精致悠闲的用餐环境，当您享受着专人为您服务的生猛海鲜和烧烤，或丰盛的自助晚餐时，还可以看到开放式厨房里厨师为您备餐的忙碌身影。



Located on the 1st floor of the hotel, the Pullman Café offers an array of modern Asian and International cuisine for the perfect dining experience. Pullman Café all-day-dining is a sophisticated, yet casual environment that includes an outdoor terrace. Watch the busy chefs as they prepare your meal in the open kitchen, savor fresh mouthwatering seafood and BBQ served in the live action style or relish on the lavish dinner buffet.



大堂酒廊 LOBBY LOUNGE

大堂酒廊提供全天服务，搭配全新视野绿色景观，为吸引更多的优质客户我们精选专业的illy咖啡和茶。高端商务精英常云集于此，享用我们的招牌下午茶或畅饮铂尔曼招牌鸡尾酒。当夜幕降临，现场乐队演出将烘托出热闹纷繁的氛围，使这里成为社交和畅饮的聚集地。

The Lobby Lounge offers spectacular views of the hotel's lush garden court yard for the complete dining experience serving specialty illy coffees and teas attracting sophisticated clientele throughout the day. Business executives are a common sight and later in the afternoon socialites enjoy our signature hi-tea and endless Pullman signature cocktails. By night time, the Lobby Lounge becomes a hotspot for socializing and refreshing drinks while enjoying live band entertainment in a sophisticated atmosphere.





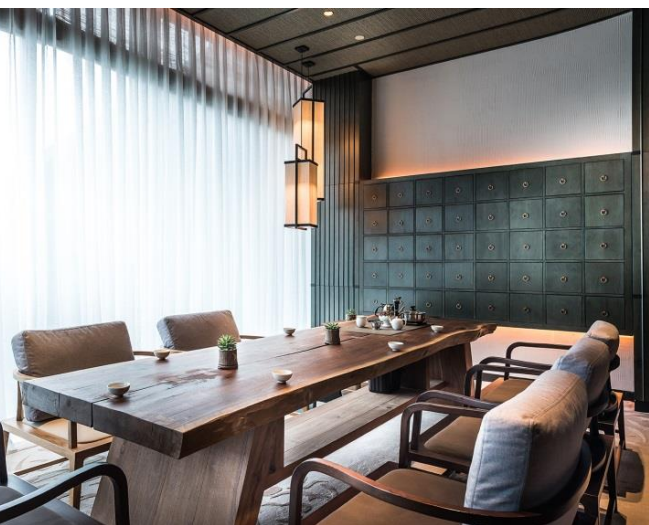


喜舍 XI BAR

喜舍酒吧是城中奢华、精致、充满活力的新场所，适合您举办鸡尾酒会或主题派对。酒吧里展示了精心挑选的优质葡萄酒、香槟、威士忌和鸡尾酒，每样酒品都安排专业侍酒师为您服务。在这时尚的酒吧里，我们以古老的制茶仪式提供高级中式茗茶。除了饮品，来自美味烘焙坊新鲜出炉的糕点、面包、蛋糕、巧克力和美味的奶酪将呈现多样选择。

Xi Bar, a vibrant venue for your cocktails reception or parties, is a sophisticated new scene in Kaifeng. The bar showcases a large selection of fine wines, champagne, aged whiskey and cocktail selection served by expert sommeliers. This trendy outlet also serves premium tea with age-old tea making ceremony, offering something for everyone. Aside from beverages, the gourmet deli offers freshly baked pastries, breads, cakes, chocolates and selection of gourmet cheeses.

为客户量身订制酒单 A customized wine list is available on request.



行政酒廊 EXECUTIVE LOUNGE

所有入住行政楼层和套房的客人均可以享受到来自行政酒廊的特别礼遇，包括个性化入住手续、早餐、下午茶，还有鸡尾酒会。

All our club rooms and suite rooms have access to the exquisite Pullman's Executive Lounge located on the 2nd floor. From personalized express check-in to breakfast, high-tea and evening cocktail.



会议及活动场地
CO-MEETINGS AND EVENTS
comeeting



开封建业铂尔曼酒店拥有全新典雅的会议场地，共计1500平方米，可分为9个会议室和宴会厅，满足各类会议活动。高挑的天花板上令人印象深刻的水晶吊灯，一流的设施和无可挑剔的服务将传统会议化为不凡。无论是董事会会议、新品发布会、红毯盛宴或童话婚礼，我们的专属会议顾问将会确保会议有序进行。在会议休息期间，我们为您准备特别的休息区、茶歇区，提供Wii游戏站和高速互联网服务。

Pullman Kaifeng Jianye is a brand new venue with nine meeting rooms and grand ballroom spanning a total space of 1,500 m² bestow grace and elegance for any occasion. Featuring impressive crystal chandeliers on high ceilings, state-of-the-art facilities and impeccable service transforms ordinary events into the extraordinary. Whether it is an exclusive board meeting, product launch, red carpet gala or fairy-tale wedding, our event managers ensures a flawless special occasion. A special Chill-out Space provided with Wii station, refreshments corner and high speed internet connection let you chill out during your Co-Meeting break.

我们瑰丽的园林和美丽的湖泊将为时尚的户外派对、活动或亲密的婚礼仪式提供最完美的布置。
Our lavish landscape garden and beautiful lake offers the perfect setting for chic outdoor parties, events or intimate wedding ceremonies.



会议室 FUNCTION ROOM	尺寸／米 DIMENSION / M (L x W x H)	面积／平米 AREAS / M²	课堂式 CLASSROOM	U型 U-SHAPE	剧院式 THEATER	鸡尾酒式 RECEPTION	宴会式 BANQUET	回型 HOLLOW SQUARE	董事会 BOARDROOM
中原厅 GRAND BALLROOM	24.6x42x8	1050	720	NA	900	1000	660	300	NA
中原厅1 BALLROOM 1	24.6x14x8	350	220	180	300	260	180	200	80
中原厅2 BALLROOM 2	24.6x14x8	350	220	180	300	260	180	200	80
中原厅3 BALLROOM 3	24.6x14x8	350	220	180	300	260	180	200	80
汴梁厅 BIAN LIANG ROOM	13.6x7.9x3.4	110	60	40	120	160	70	70	40
龙亭厅+顺河厅 LONG TING AND SHUN HE	15.9x8x3.4	130	70	40	150	160	80	80	50
龙亭厅 LONG TING	7.9x8x3.4	65	36	25	60	80	40	40	25
顺河厅 SHUN HE	7.9x8x3.4	65	36	25	60	80	40	40	25
建业厅 JIAN YE	14x7.9x3.4	110	60	40	150	160	80	80	50
祥符厅+鼓楼厅 XIANG FU AND GU LOU	13.9x8.8x3.4	120	60	40	150	160	80	80	50
祥符厅 XIANG FU	8.8x7x3.4	62	36	22	60	80	40	30	25
鼓楼厅 GU LOU	8.8x7x3.4	62	36	22	60	80	40	30	25



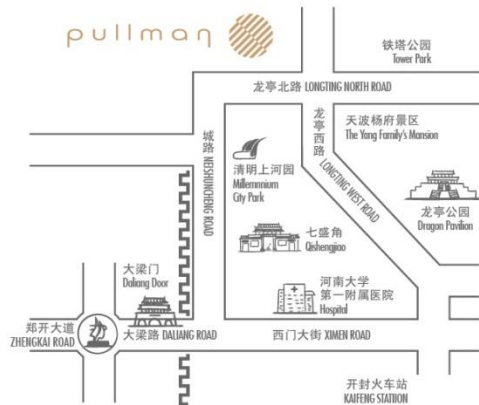
健身房及水疗会馆 FIT & SPA LOUNGE

我们提供一流的健身空间。在健身的过程中主动提供了湿冷毛巾和果汁，并可免费使用我们的桑拿浴室、游泳池及更衣室。位于一楼870平方米的室内游泳池，是夏季消暑或冬季锻炼的理想场所。此外还有按摩浴缸和儿童池，是体验家庭亲子活动场所的最佳选择。铂尔曼水疗会馆是让身心完全得到放松和宁静的地方。充满中国古代的设计和哲理，所有芳疗房间均采用自然石灰岩的软色调，创造一种宁静的感觉。这种亲密和优雅的疗程将会舒缓心灵和释放压力，为客人提供极致舒适的生活。

This state-of-the-art gym is a premier space dedicated to guests' fitness. Cold wet towels and refreshing juice are provided upon arrival and during guests' workout; free access to our Sauna and pool changing room. The 870-square-meter heated indoor swimming pool, located on the 1st floor is the perfect place for a refreshing summer dip or a winter workout. Providing access to the Jacuzzi and children pool also offers a fun family activity.

Pullman SPA is an oasis of tranquility and inner harmony. Reflecting the ancient Chinese design and philosophy, the spa's treatment suites are based on the soft tones of natural limestone to create a sense of serenity. This intimate and elegant spa calms the mind and provides daily relief for guests and ultimate comfort.





到达酒店

全球卫星定位: 北纬N34°49'4.28" 东经E114°20'10.19"

河南省开封市龙亭区龙亭北路邮编475000

距开封市火车站: 约15分钟车程

距新郑国际机场: 约60分钟车程

距主要商业中心和购物中心: 仅10分钟车程

ACCESS TO THE HOTEL

GPS:N34°49'4.28" E114°20'10.19"

Longting North Road, Longting District, Kaifeng

Henan Province, P.R.China

From Kaifeng Railway station: 15 minutes by car

From Zhengzhou International Airport: 60 minutes by car

From commercial centre and shopping malls: 10 minutes by car



NO.16 LONGTING NORTH ROAD, LONGTING DISTRICT

KAIFENG 475000 - HENAN PROVINCE - P.R.CHINA

中国河南省开封市龙亭区龙亭北路16号, 邮编 475000

T.电话: +86 (0)371 2358 9999 F.传真: +86 (0) 371 2358 6666

H8509-SM@ACCOR.COM

PULLMANHOTELS.COM - ACCORHOTELS.COM