



ARTYZEN
HOSPITALITY GROUP
雅辰酒店集團

上海临港雅辰酒店

Artyzen Lingang Shanghai

上海临港雅辰悦居酒店

Artyzen Habitat Lingang Shanghai

临港新辰国际会议中心

Lingang Xinchun International Conference Center

上海临港东缦国际公寓

Eature Residences Lingang Shanghai

临港新片区

Lingang Special Area

中国(上海)自由贸易试验区
China (Shanghai) Pilot Free Trade Zone



临港新片区

Lingang Special Area



临港新片区位于上海东南，北临浦东国际航空港，南接洋山国际枢纽港，是上海沿海大通道的重要节点。

Lingang New Area is located in the southeast of Shanghai, north of Pudong International Airport, south of Yangshan International Hub Port, is an important node of Shanghai coastal corridor.

2019年8月6日，中国（上海）自由贸易试验区临港新片区先行启动。南汇新城、临港装备产业区、小洋山岛、浦东机场南侧等区域，面积为119.5平方公里。

On August 6, 2019, the China (Shanghai) Free Trade Pilot Zone was launched in Lingang New Area, Lingang Equipment Industrial Zone, Xiaoyangshan Island, Pudong Airport such as the south side of the area of 119.5 square kms.



截至2020年10月，区域建成区面积是63平方公里，人口83万，GDP约1000亿元。

As of October 2020, the area of the built-up area is 63 square kms, with a population of 830,000 and a GDP of about 100 billion.

滴水湖

Dishui Lake

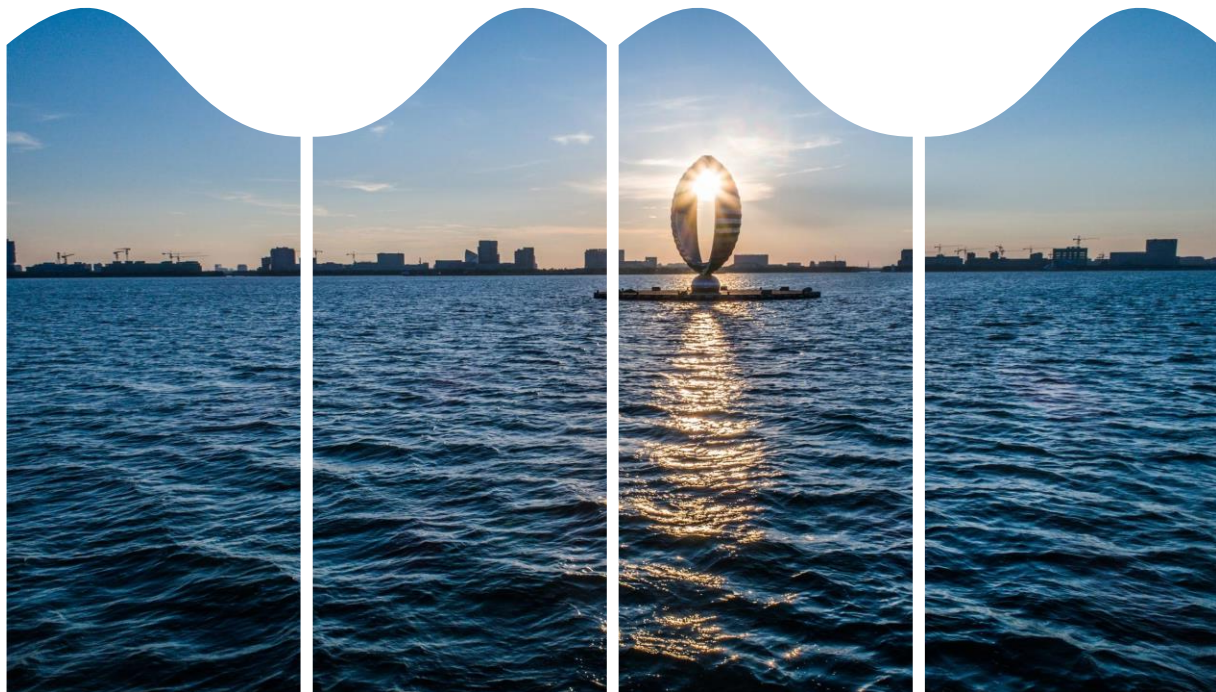
一滴来自天上的水滴，落入大海，泛起层层涟漪

水滴落入处形成湖面

A drop of water from the sky

fell into the sea, a layer of ripples

Water droplets fall into place to form the lake



滴水湖又名芦潮湖

位于上海市浦东新区临港新城

处于杭州湾与长江河口交汇处的东海之滨

距离上海市中心约76公里

是临港新城的中心湖泊

滴水湖设计构思

来源于最初对临港新城的总体规划方案

Dishui Lake is also known as Reed Tide Lake

Located in Shanghai Pudong New Area

Free Trade Zone, Shanghai, China port Lingang area

at the east coast of the East China Sea

intersection of Hangzhou Bay

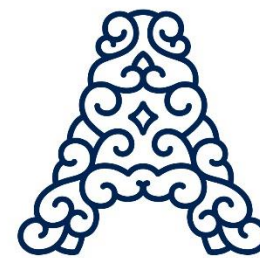
and the mouth of the Yangtze River

It is about 76 km from the center of Shanghai

It is the central lake of Lingang New Area

Dishui Lake design concept

is from the original master plan for this area



ARTYZEN

LINGANG SHANGHAI

上海临港雅辰酒店

地理位置LOCATION

位于浦东新区，中国（上海）自由贸易试验区临港新区。上海临港雅辰酒店临湖而建，坐拥滴水湖迷人景致，临近上海海昌海洋公园、上海天文馆及中国航海博物馆等景点，酒店交通便利。步行320m至地铁16号线滴水湖站，距离上海浦东国际机场仅33km²。

Located In Pudong New Area, Free Trade Zone, Shanghai, China port Lingang area. Artyzen Lingang built near Dishui Lake subway station. It offers stunning views of the lake and is close to attractions, such as Shanghai Haichang Ocean Park, Shanghai Planetarium and China Maritime Museum. The complex hotel is 320m walk to Dishui Lake Metro Station and just 33km² from Shanghai Pudong International Airport.

地址：中国（上海）自由贸易试验区临港新片区紫楸路18弄1-3号

电话：+86 21 2022 8888

No. 1-3, Lane 18, Ziduan Road, Lingang Special Area,

Pilot Free Trade Zone, Shanghai, P. R. China

T +86 21 2022 8888



海纳百川 · “织”梦未来

承载着上海腹地悠悠历史，水，流淌过繁华的陆家嘴，
Carrying the history of the Shanghai hinterland, the water, flowing through the bustling Lujiazui,

小桥流水的民居也流淌过记忆里的一切，汇入大海。
The small bridge flowing water folk house also flowed through the memory of all, into the sea

如海派文化，交织着传统与现代文明，汇聚而成。
Such as Shanghai culture is a combination of tradition and modern civilization.

更如艺术和匠艺传承融合的雅辰之蕴！
More like art and artisan art inheritance and integration of ARTYZEN!



ARTYZEN LINGANG SHANGHAI

- 305 city, garden and lake view room and suite room with floor-to-ceiling windows
- 7 restaurants: Café Mareas, Zi Duan, Artyzen Grill, Da Wan, Long Bar, Living Room, Artyzen Bakery
- Indoor Fitness Center & Swimming pool
- Kids Club
- More than 1,700m² meeting space, including 2 pillarless ballrooms

上海临港雅辰酒店

- 305间城景、园景和湖景客房及套房，落地窗视野开阔
- 7个中西式及环球美味餐厅：潮咖啡厅、紫楫壹号、焰、大腕儿、廊吧、大堂酒廊、艺焙坊
- 室内健身中心、泳池
- 儿童俱乐部
- 超过1,500m²会议空间，其中包括2个无柱宴会厅





上海临港雅辰酒店 – 客房
ARTYZEN LINGANG SHANGHAI
GUEST ROOMS

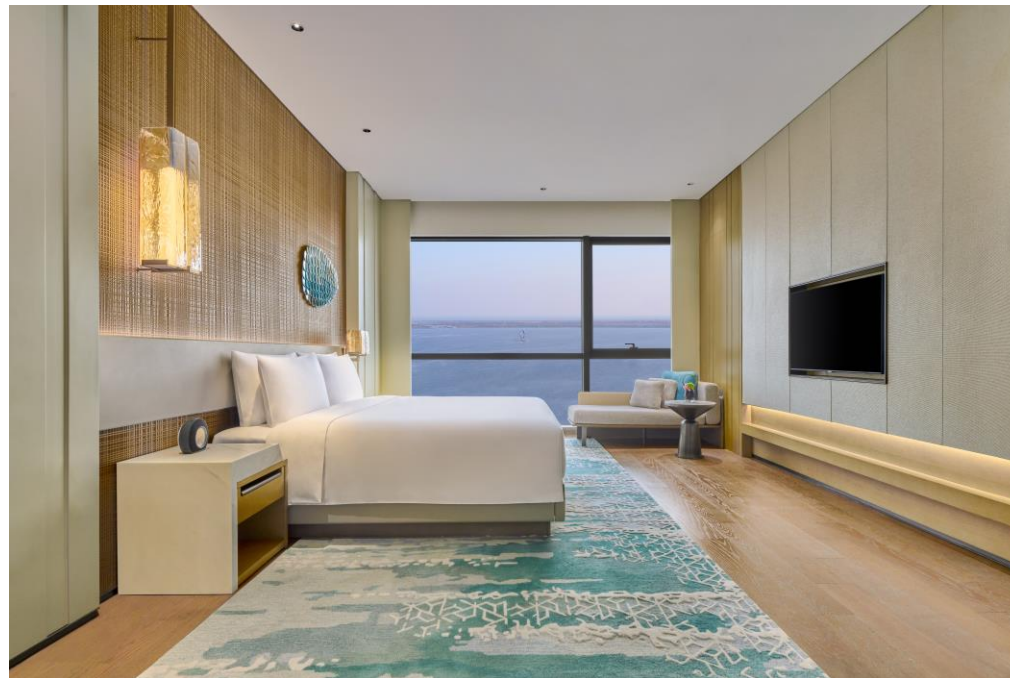
上海临港雅辰酒店 – 客房

ARTYZEN LINGANG SHANGHAI

GUEST ROOMS

上海临港雅辰酒店共拥有305间设计优雅的客房，面积自41-330m²不等，凭窗而眺，流光溢彩的滴水湖即刻映入眼帘。步入房内，素雅的地毯上简单的一笔勾勒，恰如翻滚的浪花。抬头见床背板肌理交织的材料，犹如一根根编制的渔网。酒店所有客房均配备独立浴缸、步入式淋浴间和胶囊咖啡机等设施。无处不在的海派文化设计元素点缀于客房装饰中，传统文明积淀与现代低调奢华格调相衬，尽现典雅之致。

The hotel features 305 exquisite and stylishly appointed guest rooms, ranging from 41-330m². With floor-to-ceiling windows overlooking the panoramic skyline of the Dishui Lake, all guest rooms are equipped with an individual deep-soaking bathtub, a separate rainforest shower space and a capsule coffee machine, amongst other modern conveniences. Cultural elements of traditional Shanghai craftsmanship, complementing and showcasing the brilliance and elegance of Lingang culture.



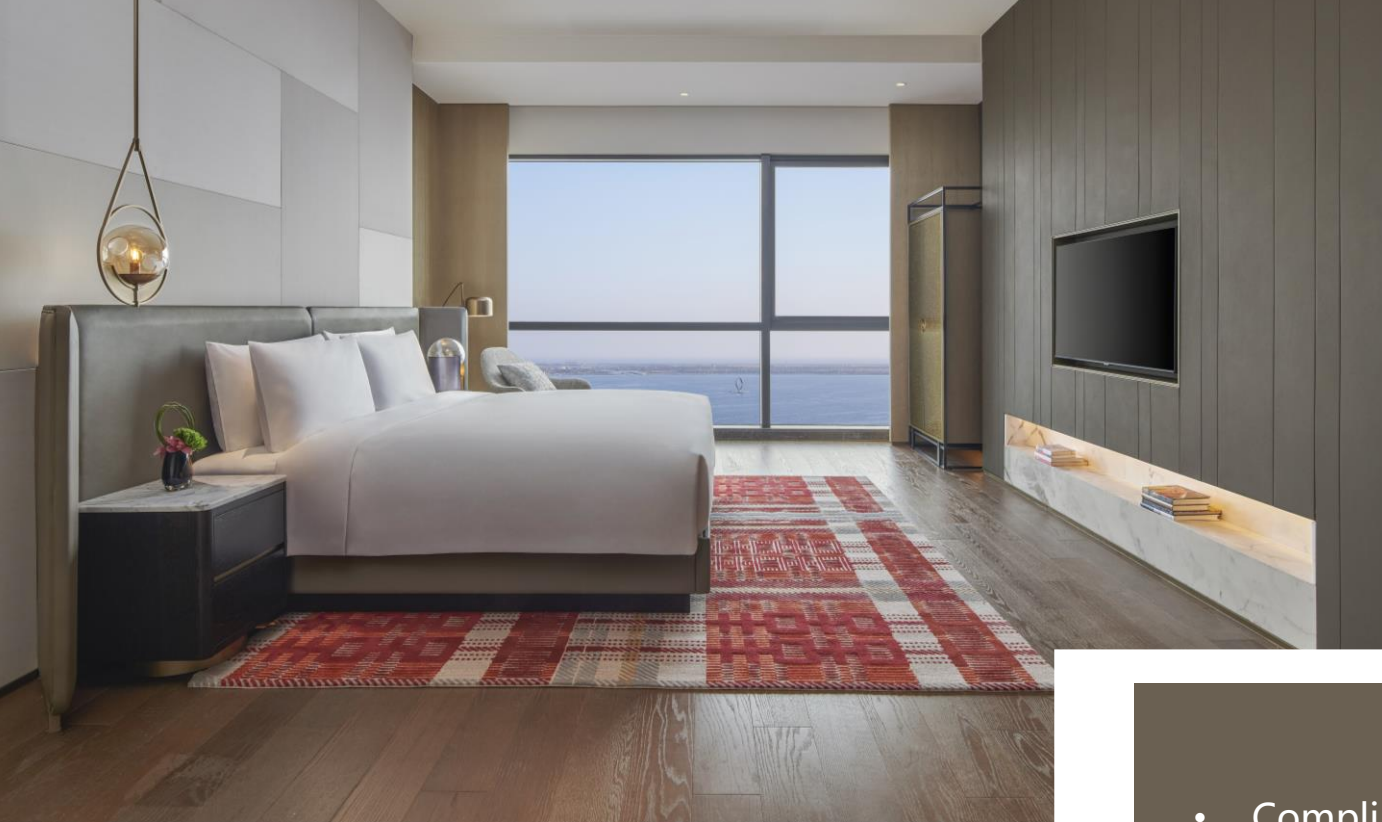
上海临港雅辰酒店 – 客房

ARTYZEN LINGANG SHANGHAI
GUEST ROOMS

| 房型 Room Type | 面积/平方米 Area/m² | 数量 Qty |
|------------------------------|----------------|-----------|
| 城景双床房 City View Twin | 41-43 | 70 |
| 雅辰亲子房 Artyzen Famliy Twin | 41-43 | 10 |
| 城景套房 City View Suite | 57-68 | 6 |
| 园景大床房 Garden View King | 41-47 | 40 |
| 园景双床房 Garden View Twin | 41-47 | 77 |
| 园景套房 Garden View Suite | 75 | 7 |
| 湖景大床房 Lake View King | 46-47 | 74 |
| 湖景套房 Lake View Suite | 68-94 | 16 |
| 大使套房 Ambassador Suite | 141 | 2 |
| 主席套房 Chairman Suite | 235 | 1 |
| 沪亭 Hu Suite | 330 | 1 |
| 澜亭 Lan Suite | 230 | 1 |

305





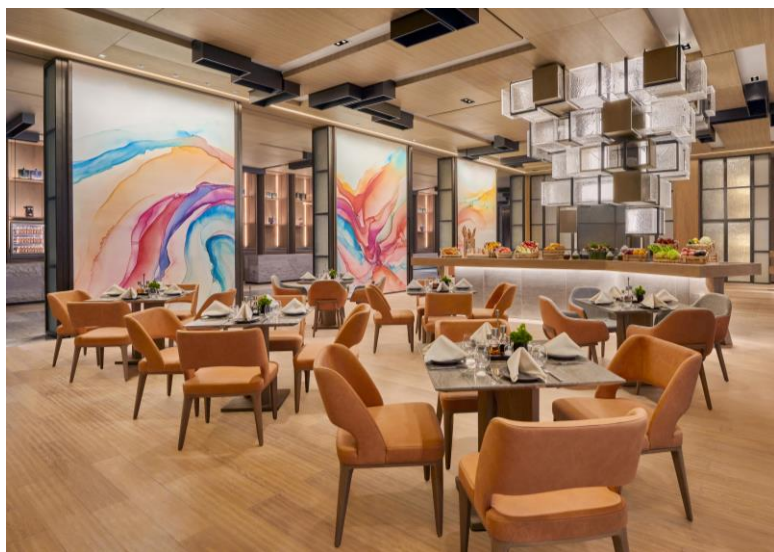
- 免费高速无线上网
- Lavazza胶囊咖啡机
- 自助茗茶设备
- 50-65寸高清电视机
- 丝涟床垫
- 熨斗、熨衣板及保险箱
- 阿佩利斯洗漱用品
- 智能洁具



- Complimentary high-speed Wi-Fi
- Lavazza capsule coffee machine
- Self-service tea amenities
- 50-60' ' TV
- Sealy mattress
- Iron, ironing board, In-room safe
- Appelles wash supplies
- Smart appliance



上海临港雅辰酒店 – 餐厅
ARTYZEN LINGANG SHANGHAI
RESTAURANTS



潮咖啡厅 | 全日餐厅

280座 | 酒店一层

营业时间:

全日餐厅: 06:30am-22:30pm

自助早餐: 06:30am-10:30am(工作日) 07:00am-11:00am(周末)

自助午餐: 12:00pm-14:30pm 自助晚餐: 18:00pm-21:00pm

CAFÉ MAREAS | All Day Dining

Capacity 280 | @ L1

Operation Hour:

All Day Dining: 06:30am-22:30pm

Breakfast Buffet: 06:30am-10:30am(weekday) 07:00am-11:00am(weekend)

Lunch Buffet: 12:00pm-14:30pm

Dinner Buffet: 18:00pm-21:00pm

潮咖啡厅位于酒店一层，同时拥有室内及室外两种用餐空间。餐厅共设有280个座位及两个包厢。进入接待区，墙面粗犷的肌理拉近了您与自然的距离，伫立的灯光如星星渔火，似乎是有秩序欢迎宾客的至高礼仪。

全日餐厅的热闹非凡从一场活力早餐开始。餐厅大厨也会跟随季节时令，推陈出新，定期推出各种特色创意美食惊艳您的味蕾。烘焙及咖啡展示台，开放厨房，运河露台及花园露台丰富客人的用餐体验，满足各式活动需求。

Café Mareas is located on the first floor of the hotel with both indoor and outdoor dining space. The restaurant has 280 seats and two private rooms. The rough stone texture of reception area make you approach the nature and the standing lamp likes lights on the boat sparking in the night. It seems to be the highest etiquette to welcome guests in an orderly manner.

The mental energy starts with the breakfast in café Mareas. Chefs will follow the season to introduce a variety of special creative food to surprise your taste buds. Roast and coffee display counter, show kitchen and canal terrace make the restaurant a better dining experience and the ability to host a variety of events.



大堂酒廊

56座 | 酒店一层

营业时间:

10:00am-18:00pm

LIVING ROOM

Capacity 56 | @ L1

Operation Hour:

10:00am-18:00pm

大堂酒廊毗邻酒店前台。驻足大堂，绿植墙泛起层层涟漪，外面阳光透过落地玻璃窗洒进来，犹如惬意的江南风光。品一杯清香中式茶，抿一口手工中式糕点，在这里尽享您的慵懒午后时光。

The Living room is adjacent to the front desk. Standing in the lobby, the green landscape wall ripples layer upon layer and outside sunlight sprinkled in through the floor-to-ceiling window, which make you fell in jiang Nan cities. With a cup of Chinese tea, a piece of traditional handmade Chinese cake, please enjoy your homelike afternoon here.



大腕儿 | 火锅餐厅

66座| 酒店1层

营业时间:

午餐 : 11:00am-14:00pm

晚餐 : 17:00pm-21:00pm

DA WAN | Hotpot Restaurant

Capacity 66 | @ L1

Operation Hour:

Lunch : 11:00am-14:00pm

Dinner : 17:00pm-21:00pm

大腕儿位于酒店一层，沿街入口使餐厅更加醒目。餐厅中随处可见的渔网元素营造出满满的生活气息。三五知己，围炉聚炊欢呼处，百味消融小釜中，一天的疲惫顿时烟消云散。餐厅选用秘制火锅锅底及酱料，精选应季新鲜食材，秉承了雅辰酒店对于食品品质的极致追求。

Da Wan is located on the first floor of the hotel and the entrance of the restaurant along the street makes the restaurant stand out. Fishing net elements throughout the restaurant create a full atmosphere of life. It's a good place for friends gathering, the exhaustion of a day suddenly disappear into thin air. With secret recipe, the restaurant use selected seasonal fresh ingredients to inherits the ultimate pursuit of food quality of Artyzen Brand.



艺焙坊 | 烘焙及礼品屋

28座 | 酒店一层

营业时间:

08:00am-20:00pm

ARTYZEN BAKERY | Bakery and Boutique

Capacity 28 | @ L1

Operation Hour:

08:00am-20:00pm

艺焙坊及开放式烘焙厨房可向住店及周边客人售卖每日新鲜手工烘焙产品，厨师采用秘制酵母，绿色食材，使出品更加营养健康。除了优质的烘焙产品及现磨咖啡外，同时出售各式精选礼品。

Artyzen bakery and open kitchen provide daily fresh and handmade baking products to in house guests and neighbors. Hotels chefs use secret yeast and healthy ingredients to make the products nutritious and healthy. In addition to quality roast products and freshly ground coffee, we also sell a variety of selected gifts.



紫楸壹号 | 中餐厅

166座 | 酒店三层

营业时间:

营业时间: 午餐: 11:00am - 14:00pm

晚餐: 17:00pm - 21:00pm

ZI DUAN | Chinese Restaurant

Capacity 166 | @ L3

OPERATION HOUR: LUNCH: 11:00am - 14:00pm

DINNER: 17:00pm - 21:00pm

紫楸壹号位于酒店三层，设有八个包厢。餐厅设计融入滨海渔家元素，长街曲巷，黛瓦粉墙。中餐团队致力于为宾客提供地道的“海”派菜肴及周到贴心的服务。结合临港本地区丰富的水产及农副产品资源，确保食材新鲜。

Zi Duan is located on the 3rd floor of the hotel with 8 private rooms. The design of the restaurant is inspired by the coastal village elements, winding lane street and Jiangnan style tile and wall. The Chinese restaurant team is committed to providing guests with authentic Shanghai cuisine and considerate service. Make full use of the abundant aquatic products and agricultural and sideline products resources in Lingang to ensure the freshness of food materials.

焰 | 烧烤餐厅

66座, 含1包房 | 酒店二层

营业时间:

18:00pm-22:00pm

ARTYZEN GRILL | BBQ Restaurant

Capacity 66, Including 1 Function Room | @ L2

Operation Hour:

18:00pm-22:00pm

焰餐厅位于酒店二层, 拥有66个座位及1间私人包厢。餐厅设计融合了中西方文化的精髓, 赋予空间不同的风情, 简雅的元素搭配, 没有繁复的修饰却也别有一番风味。

不仅餐厅设计独树一帜, 食品品质也别具风味。风干熟成牛肉房及各国进口佳酿, 美食与美酒汇集于此, 味蕾瞬间被满足。

Artyzen Grill is located on the 2nd floor of the hotel, with 66 seats and a private room. Restaurant design coalesce the essence of Chinese and Western culture, giving different amorous feelings. Simple and elegant elements collocation with no complex decoration make you feel different.

Not only the restaurant design is unique, the food quality is also unique. Air dried and cooked beef house and imported fine wine, food and wine gathered here, taste buds are instantly satisfied.





廊吧 | 酒吧

130座 | 酒店二层

营业时间:

18:00pm-01:00am

LONG BAR | Bar

Capacity 130 | @ L2

Operation Hour:

18:00pm-01:00am

廊吧位于酒店二层。午夜，顶部的天窗像是贴上了剪纸的窗花，月色透进来洋洋洒洒落在你的眼里。超长的酒吧吧台可以同时让多个调酒师同时为来宾展示调酒的艺术，乐声清幽，空气弥漫着醉人的气息。在这里，品一杯美酒，尽情诉说和倾听每一个动人的故事。

Long Bar is located on the second floor of the hotel. During the midnight, the skylight is like the window with paper-cut, moonlight comes in through the window and falls in your eye. The long bar allows multiple bartenders to demonstrate the art of mixology at the same time. You can enjoy a glass of wine and tell a story with melodious music and intoxicating air.



上海临港雅辰酒店-宴会厅

ARTYZEN LINGANG SHANGHAI
MEETINGS & EVENTS

总面积约达1,500m²的宴会及会议场地：包括2个无柱式大宴会厅，雅辰大宴会厅面积840m²，层高7m，陆雅厅面积630m²，层高4m。专业的销售团队为您提供一站式的专业服务，全力保障每个会议及活动的圆满成功。

Banquet and conference venue with a total area of about 1500m² : including a large ballroom without columns, with Artyzen Grand Ballroom of 840m² and a floor height of 7m; Artyzen Ballroom of about 630m² , a floor height of 4m , flexible layout, to meet the needs of different activities, professional sales team to provide you with one-stop professional services, to ensure the success of every meeting and activity.



陆雅厅-前厅

Front Hall of Artyzen Ballroom



陆雅厅

上海临港雅辰酒店2层

陆雅厅630m², 层高4m, 布局灵活, 满足不同活动所需。

Artyzen Ballroom

2nd floor, Artyzen Lingang Shanghai

A multi-function hall of about 630m², a floor height of 4m, flexible layout, to meet the needs of different activities.

雅辰大宴会厅

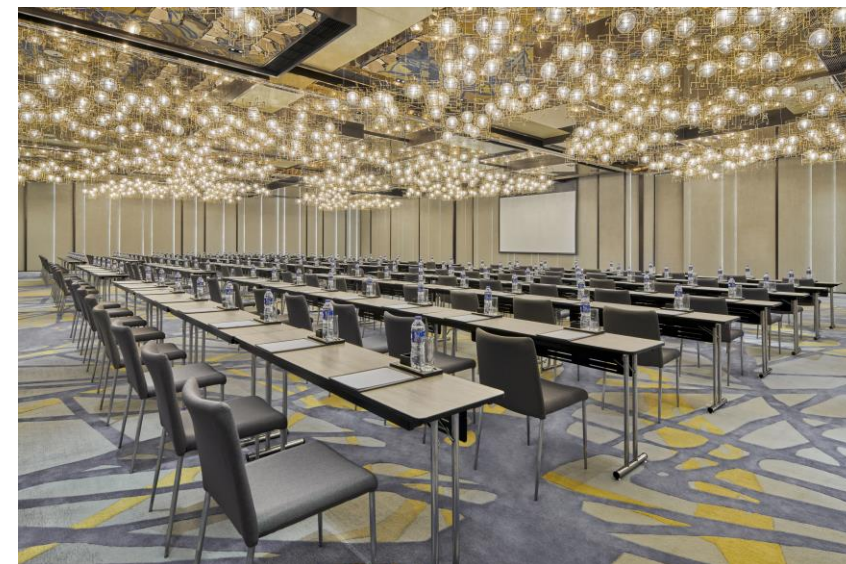
上海临港雅辰酒店3层

雅辰大宴会厅840m², 层高7m, 布局灵活, 满足不同活动所需。

Artyzen Grand Ballroom

3rd floor, Artyzen Lingang Shanghai

A multi-function hall of about 840m², a floor height of 7m, flexible layout, to meet the needs of different activities.



上海临港雅辰酒店 – 宴会厅

ARTYZEN LINGANG SHANGHAI - Meetings & Events

| 宴会 Ballroom Room | 楼层 Floor | 长*宽/米 L*W/m | 面积/平方米 Area/m ² |
|-------------------------------------|----------|-------------|----------------------------|
| 陆雅厅 ARTYZEN BALLROOM | L2 | 21*30 | 630 |
| 陆雅厅 I II III ARTYZEN BALLROOM | L2 | 21*10 | 210 |
| 小会议室 SMALL FUNCTION ROOM | L2 | 9*7 | 63 |
| 休息室 VIP ROOM | L2 | 12*6 | 72 |
| 雅辰大宴会厅 ARTYZEN GRAND BALLROOM | L3 | 22*38 | 840 |
| 雅辰大宴会厅 A ARTYZEN GRAND BALLROOM A | L3 | 22*19 | 420 |
| 雅辰大宴会厅 B ARTYZEN GRAND BALLROOM B | L3 | 22*19 | 420 |
| 休息室 VIP ROOM | L3 | 11*6 | 66 |



上海临港雅辰酒店 - 设施

ARTYZEN LINGANG SHNGHAI FACILITIES



大堂及前台接待 | 酒店一层, 231m²

室内花园 | 酒店一层, 1,870m²

儿童俱乐部 | 酒店一层&二层, 138m²

室内健身中心 | 酒店二层, 266.7m²

室内泳池 | 酒店二层, 647.7m²

运河露台 | 酒店三层, 440m²

LOBBY @ RECEPTION | @ L1, 231m²

INDOOR GARDEN | @ L1, 1,870m²

KIDS CLUB | @ L1& L2, 138m²

INDOOR FITNESS CENTER | @ L2, 266.7m²

INDOOR SWIMMING POOL | @ L2, 647.7m²

CANAL TERRACE | @ L3, 440m²



健身房FITNESS CENTER

工作之余，宾客可前往位于酒店二层的健身中心与室内泳池放松身心，在喧嚣之外觅得一方清净。24小时开放的健身中心配备顶尖专业训练器械，其中包括3台跑步机，1台椭圆机，健身车，划船训练器等。

On the wellness front, the hotel provides a range of facilities for guests' rejuvenation. The 24-hour gym is decked out with advanced equipment for fitness training including 3 treadmill, 1 elliptical machine, rowing trainer and etc.

营业时间Operation Hour: 24hrs





游泳池SWIMMING POOL

室内恒温泳池位于酒店二层，并配有超大按摩浴池，宾客可以畅游其中，享受自然的温暖阳光。

The heated indoor swimming pool is located on the 2nd floor of the hotel and is equipped with a large jacuzzi, where guests can swim and enjoy the natural warmth of the sun.

营业时间Operation Hour : 07:00am-22:00pm



儿童俱乐部KIDS CLUB

儿童俱乐部位于酒店一层。趣味滑梯和探险攀登等游玩设施使小朋友爱上运动，每次入住都能拥有欢乐和幸福的体验。父母可以解放双手，尽享独处时光。

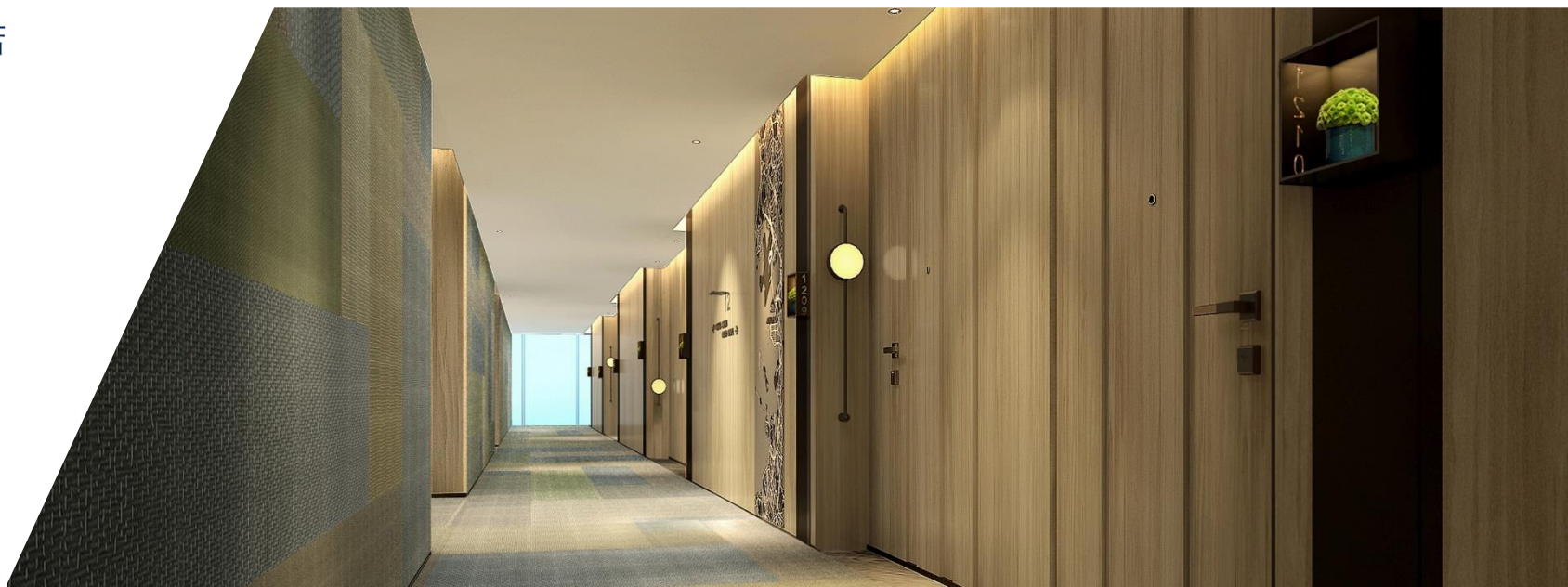
The kid' s club is located on the 1st floor of the hotel. Fun slides and climbing facilities make children love sports and enjoy fun and happy experiences during the stay. Parents can enjoy the spare time and leave alone .



ARTYZEN
LINGANG SHANGHAI
上海临港雅辰酒店

ARTYZEN *habitat*

LINGANG SHANGHAI
上海临港雅辰悦居酒店



地理位置LOCATION

位于浦东新区，中国（上海）自由贸易试验区临港新区。上海临港雅辰悦居酒店坐拥滴水湖迷人景致，临近上海海昌海洋公园、上海天文馆及中国航海博物馆等景点，酒店交通便利。步行320m至地铁16号线滴水湖站，距离上海浦东国际机场仅33km²。

Located In Pudong New Area, Free Trade Zone, Shanghai, China port Lingang area. Artyzen Habitat Lingang Shanghai built near Dishui Lake subway station. It offers stunning views of the lake and is close to attractions, such as Shanghai Haichang Ocean Park, Shanghai Planetarium and China Maritime Museum. The complex hotel is 320m walk to Dishui Lake Metro Station and just 33km² from Shanghai Pudong International Airport.

中国(上海)自由贸易试验区临港新片区水芸北路39弄1-3号

电话: +86 21 2022 6666

No. 1-3, Lane 39, North Shuiyun Road, Lingang Special Area,
Pilot Free Trade Zone, Shanghai, P. R. China

T +86 21 2022 6666

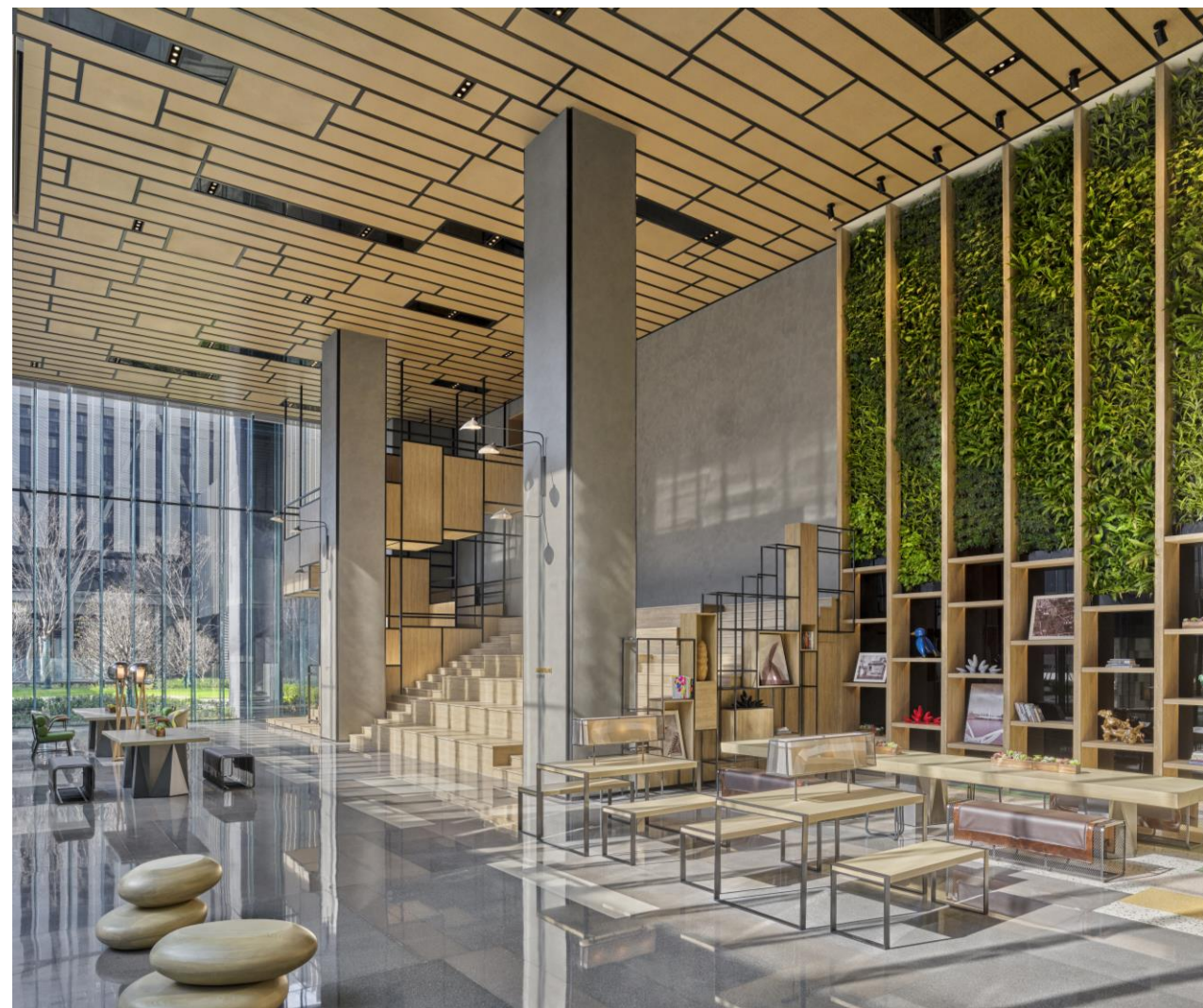


上海临港雅辰悦居酒店

- 364间湖景和城景客房，落地窗视野开阔。
- 思方汇餐厅及咖啡为您带来健康轻食、西式烘焙、咖啡及饮品。
- 室内健身中心
- 自助洗衣房
- 社交新空间：创意工坊及阶梯式文化秀场

ARTYZEN HABITAT LINGANG SHANGHAI

- 364 lake view and city view rooms with floor-to-ceiling windows.
- Townsquare Bistro & Café provide you healthy food, bakeries, coffee and a variety of drinks.
- Indoor Fitness Center
- Self-service Laundry
- Social Space: Studio & Amphitheatre



上海临港雅辰悦居酒店 – 客房

ARTYZEN HABITAT LINGANG SHANGHAI GUEST ROOMS



- 酒店现代化卧室将前卫的细节与功能融为一体，设计巧妙，可最大限度地利用空间，满足客人的需求。每间客房均配有50英寸高清电视、床头USB端口、保险箱、步入式花洒淋浴和超高速免费 Wi-Fi。
- The hotel' s tech-savvy, modern bedrooms intermix edgy details with functionality and cleverly designed to maximize the space and flexibility to adapt the room to guests' needs. Each guestroom is equipped with 50' ' screen TV, bedside USB ports, electronic safety box, walk-in rain showers and furiously fast and free Wi-Fi.

上海临港雅辰悦居酒店 – 客房

ARTYZEN HABITAT LINGANG SHANGHAI GUEST ROOMS



- 免费高速无线上网
 - 自助茗茶设备
 - 50寸高清电视机
 - 熨斗、熨衣板及保险箱
 - 丝涟床垫
 - 阿佩利斯洗漱用品
-
- Complimentary high-speed Wi-Fi
 - Self-service tea amenities
 - 50" screen TV
 - Iron, ironing board, In-room safe
 - Sealy mattress
 - Appelles wash supplies

上海临港雅辰悦居酒店 – 客房

ARTYZEN HABITAT LINGANG SHANGHAI GUEST ROOMS

| 房型 Room Type | 面积/平方米 Area/m ² | 数量 Qty |
|-----------------------------------|----------------------------|-----------|
| 悦居大床房 Habitat King | 32-35 | 169 |
| 悦居豪华大床房 Habitat Deluxe King | 40-42 | 16 |
| 悦居豪华双床房 Habitat Deluxe Twin | 40-47 | 116 |
| 悦居湖景大床房 Habitat Lake View King | 40 | 10 |
| 悦居湖景双床房 Habitat Lake View Twin | 40-43 | 40 |
| 悦居星辰亲子房 Habitat Family Twin | 61 | 13 |
| | | 364 |

上海临港雅辰悦居酒店 – 餐厅

ARTYZEN HABITAT LINGANG SHANGHAI - RESTAURANT



思方汇咖啡

酒店一层

TOWNSQUARE CAFÉ | @L1

思方汇咖啡

座位: 40 | 酒店一层

营业时间: 6:30am-

22:30pm

TOWNSQUARE Café

Capacity: 40pax | @ L1

Operation Hour: 6:30am-22:30pm

餐厅舒适宁静，远离城市喧嚣。用餐

空间灵活多变，满足您的不同需求。

Townsquare Café is a tranquil space which is far away from the bustle of the city. Flexible dining space meets your different requirements.

上海临港雅辰悦居酒店 – 餐厅

ARTYZEN HABITAT LINGANG SHANGHAI - RESTAURANT



思方汇餐厅 | 全日餐厅

座位：144 | 酒店二层

营业时间：6:30am-22:30pm

TOWNSQUARE Bistro

Capacity 144 | @ L2

Operation Hour: 6:30am-22:30pm

餐厅旨在为商务和会议客人提供一个休闲舒适的用餐环境及健康快捷的美食。

Townsquare Bistro is the place to offer you a comfortable dining space with health and convenient food.

上海临港雅辰悦居酒店 – 设施

ARTYZEN HABITAT LINGANG SHANGHAI-FACILITY

大堂及前台接待 | 酒店一层, 350m²

LOBBY & RECEPTION | @ L1, 350m²

文化秀场 | 酒店一层, 281m²

AMPHITHEATRE | @ L1, 281m²

创意工坊 | 酒店一层, 76m²

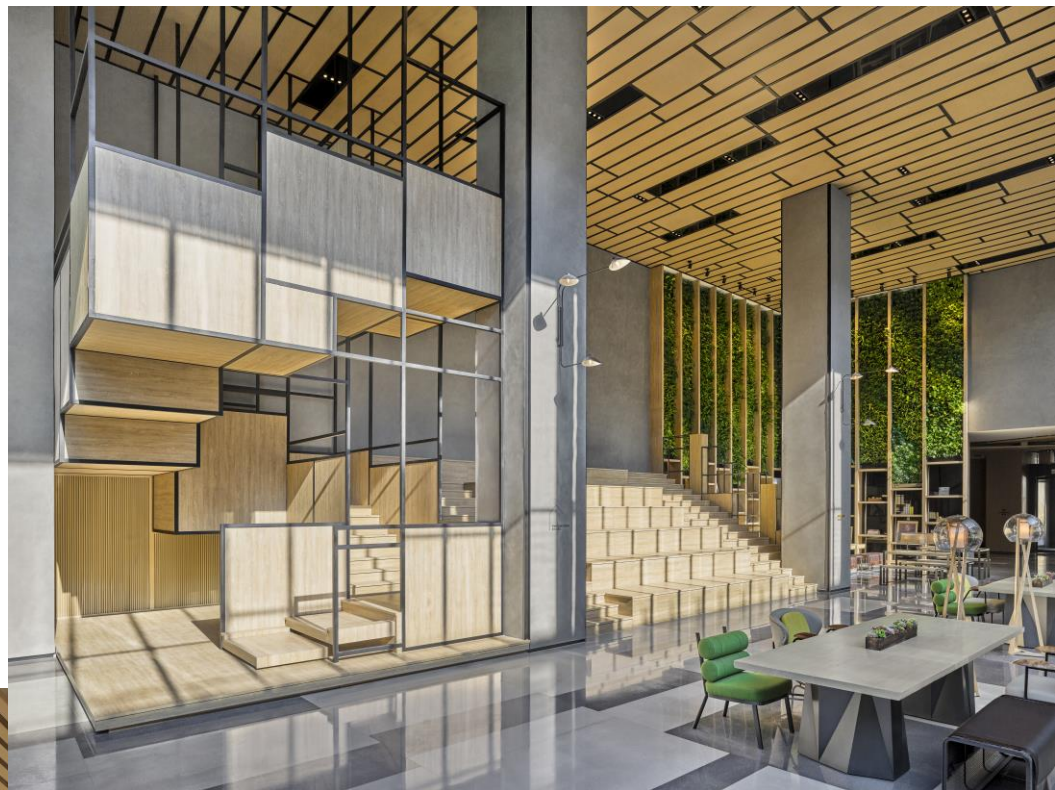
STUDIO | @ L1, 76m²

健身空间 | 酒店二层, 113m²

WORKOUT | @ L2, 113m²

生活空间 | 酒店二层, 43m²

UTILITY HUB | @ L2, 43m²





创意空间

创意工坊 1F

76m²多功能灵活共享空间，可为客人量身打造不同的会议需求。

Studio 1F

76m² multifunction space can be tailored to meet guest needs.

文化秀场 1F

281m²的阶梯式空间，呈现与众不同的会议形式，可以作为客人演讲、授课或新品发布的不二之选。

Amphitheatre 1F

281m² Amphitheatre is presented in the form of step theatre, which is suitable for holding all kinds of exhibition activities.

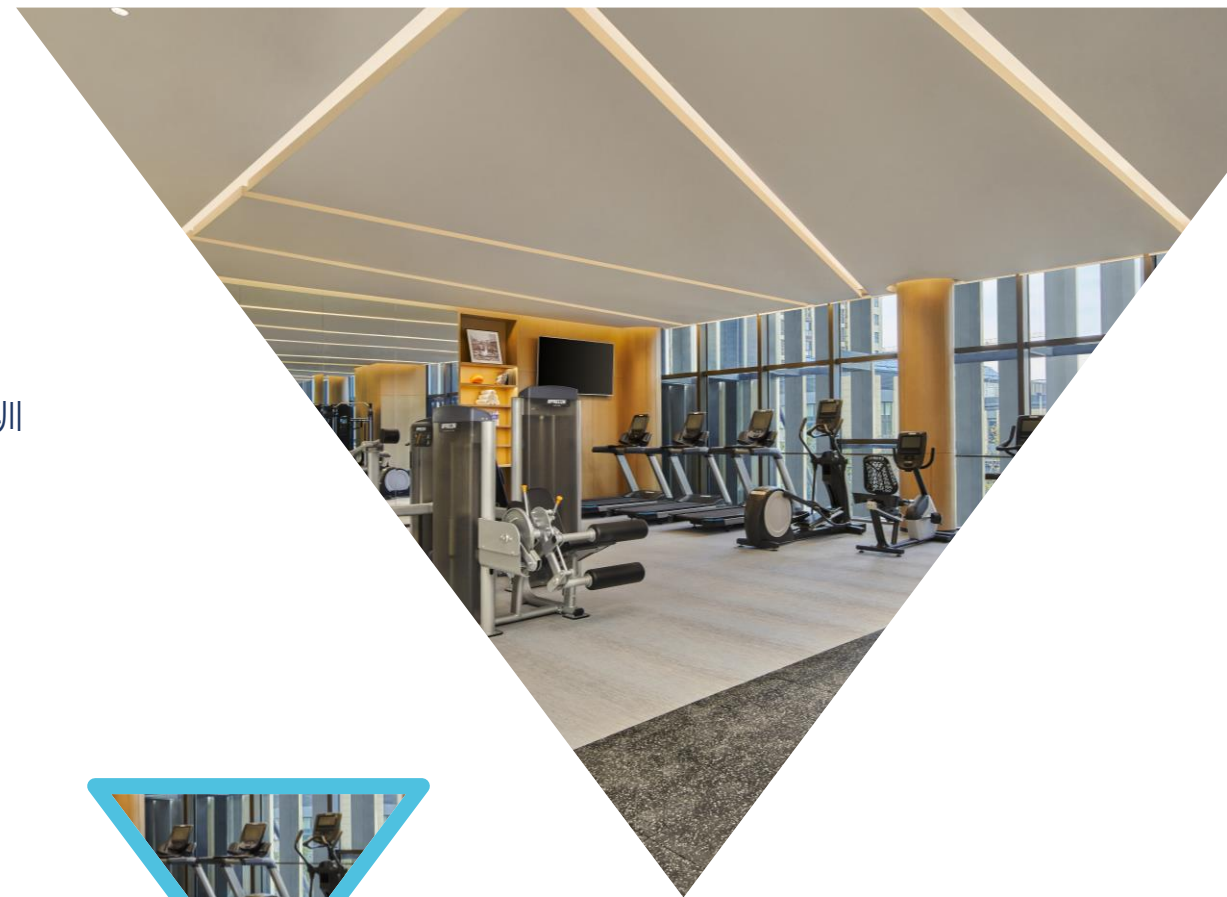
健身空间WORKOUT

工作之余，宾客可前往位于酒店二层的健身中心，健身房24小时开放并配备必确专业训练器械，客人可以在此挥洒汗水，强健体魄。

After work, the guests can go to the WORKOUT which located on the second floor of the hotel. It' s open 24hrs a day and equipped with professional PRECOR brand equipments. Guests can sweat and build up their body here.

位置Location: 2F

营业时间Operation Hour: 24hrs



生活空间UTILITY HUB

健身房与生活空间相邻。24小时自助洗衣服务让您可随时使用洗衣机和烘干机。

Workout and Utility Hub are adjacent. 24-hour self-service laundry gives you an access to use the washing machine and dryer.

位置Location: 2F

营业时间Operation Hour: 24hrs



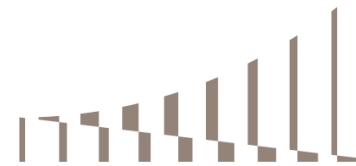


临港新辰国际会议中心

- 共计超4,000m²会议空间
- 面积约2,200m²无柱大会堂，可灵活分割为2个宴会空间
- 17个多功能会议室，面积48-96m²

LINGANG XINCHEN INTERNATIONAL CONFERENCE CENTER

- More than 4,000m² meeting space
- 2,200m² Grand Hall with no pillar, can be divided into 2 ballrooms
- 17 meeting rooms ranging from 48-96m²



临港新辰
国际会议中心

LINGANG XINCHEN
INTERNATIONAL
CONFERENCE CENTER

临港新辰国际会议中心 – 会议空间容量表

LINGANG XINCHEN INTERNATIONAL CONFERENCE CENTER

CAPACITY CHART

| 会议室 Meeting Room | 楼层 Floor | 长*宽/米 L*W/m | 面积/平方米 Area/m ² |
|---|----------|-------------|-------------------------------|
| 会议室 1 2 3 5 6 Meeting Room 1 2 3 5 6 | L1 | 9*8 | 72 |
| 会议室 10 11 12 13 Meeting Room 10 11 12 13 | L1 | 6*8 | 48 |
| 会议室 7+8+9 Meeting Room 7+8+9 | L1 | 12*25 | 300 |
| 会议室 7 8 9 Meeting Room 7 8 9 | L1 | 12*8 | 96 |
| 会议室 15 16 Meeting Room 15 16 | L1 | 9*8 | 72 |
| 会议室 17 18 19 Meeting Room 17 18 19 | L1 | 9*8 | 72 |
| 贵宾室 1 VIP Room 1 | L1 | 18*7 | 126 |
| 大会堂 Grand Hall | L2 | 50*45 | 2200 |
| 大会堂 I Grand Hall I | L2 | 50*23 | 1100 |
| 大会堂 II Grand Hall II | L2 | 50*23 | 1100 |
| 贵宾室 2 VIP Room 2 | L2 | 12*6 | 72 |

临港新辰国际会议中心



大会堂 Grand Hall



城市长廊 City Promenade



会议室 Meeting Room



E A T U R E

RESIDENCES LINGANG

临 港 东 缦 国 际 公 寓

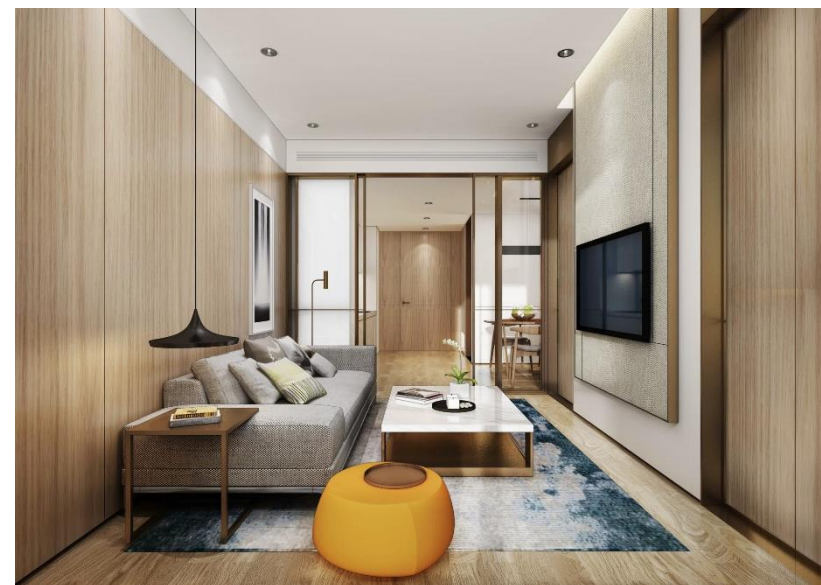
陆家嘴集团旗下的临港东缦国际公寓总计128套客房，所有房间自带厨房，配备了西门子冰箱、洗衣机，并联合科勒卫浴携手打造中国式优雅生活的典范。

Eature Residences Lingang Shanghai offers total of 128 guest rooms under Lujiazui Group. All guest rooms are equipped with their own kitchens, Siemens refrigerators and washing machines. Kohler sanitary ware create a model of elegant Chinese life.



整栋公寓主要分为四种房型：一室户、一室一厅、一室两厅、联通房。房价包含水费、电费以及每周一次打扫服务。

The whole apartment is mainly divided into four room types: Single room apartment; One bedroom with one living room apartment; One bedroom with two living rooms apartment and connecting room family apartment. The rate includes water charges, electricity charges and a weekly cleaning service.




临港东缘国际公寓位于临港周边区域，滴水湖美景尽收眼底。地铁16号线滴水湖站步行仅需3分钟，步行即可到达著名的滴水湖景区，非常方便。公寓周边属于综合商务区，有综合购物广场和大型超市。

Eature Residences Lingang Shanghai is located in the area around Lingang , with a beautiful view of Dishui Lake. Dishui Lake Station of Metro Line 16 is only 3 minutes' walk, and the famous Dishui Lake scenic spot is within walking distance, which is very convenient.

The surrounding area of the apartment belongs to the comprehensive business district, with comprehensive shopping plaza and large supermarkets.

- 0.3km • **滴水湖**
Dishui Lake
- 0.3km • **地铁16号线滴水湖站**
Line no.16 Dishui Lake Metro Station
- 1km • **上海天文馆**
Shanghai Astronomy Museum
- 2.5km • **中国航海博物馆**
China Maritime Museum
- 2.5km • **上海海昌海洋公园**
Shanghai Haichang Ocean Park
- 6.3km • **上海鲜花港**
Shanghai Flower Port
- 7km • **南汇嘴观海公园**
Nanhuizui Park
- 11.3km • **上海滨海高尔夫俱乐部**
Shanghai Binhai Golf Club
- 34km • **上海浦东国际机场**
Shanghai Pudong International Airport
- 36km • **上海迪士尼乐园**
Shanghai Disney Resort
- 56km • **上海人民广场**
People' s Squai of Shanghai
- 65km • **上海虹桥综合交通枢纽**
Shanghai Hongqiao Integrative Transport Hub





上海临港雅辰酒店

地址：中国（上海）自由贸易试验区临港新片区紫霞路18弄1-3号

电话：+86 21 2022 8888

Artyzen Lingang Shanghai

No. 1-3, Lane 18, Ziduan Road, Lingang Special Area, Pilot Free Trade Zone, Shanghai,

P. R. China

T +86 21 2022 8888

临港新辰国际会议中心

中国上海市浦东新区临港新城水芸北路39弄1号

Lingang Xinchun International Conference Center

No. 1, Lane 39, North Shuiyun Road, Lingang Special Area,

Pudong New District, Shanghai, P. R. China

上海临港雅辰悦居酒店

中国(上海)自由贸易试验区临港新片区水芸北路39弄1-3号

电话：+86 21 2022 6666

Artyzen Habitat Lingang Shanghai

No. 1-3, Lane 39, North Shuiyun Road, Lingang Special Area, Pilot Free Trade Zone,

Shanghai, P. R. China

T +86 21 2022 6666

上海临港东缙国际公寓

中国上海市浦东新区临港新城水芸北路99号

电话 + 86 21 5862 8888

Eature Residences Lingang Shanghai

No. 99, North Shuiyun Road, Lingang Special Area, Pudong New District,

Shanghai, P. R. China

T + 86 21 5862 8888

