



CROWNE PLAZA®

洲际酒店集团旗下

XIAMEN JIMEI SEAVIEW

厦门集美海景皇冠假日酒店



厦门，闽海之门，英雄之城。

作为美丽的滨海旅游城市,厦门以侨乡风情、异国情调、闽南文化、温馨现代为特色，历史文化传统和现代城市气息兼备，多元文化交融。

在厦门，精彩总是不期而遇。你可以尽情感受鼓浪屿的诗情画意，领略集美嘉庚建筑的特色风情，迎海风惬意骑行在环岛路，或探访厦门大学，重温校园时光。

Xiamen, known as the "Island of Egrets", located in the southeast coast of China. As a beautiful coastal tourist city, it is enchanting not only because of its beautiful scenery but more importantly, integrating the cultures of overseas Chinese, western countries and Southern Fujian, it is where history and tradition merge with modernity and urbanity. You can feel the distinctive garden art landscape of Horticulture Expo Garden, visiting century school village and appreciate Jimei's characteristic Jiageng architecture, ride along marine bicycle lane and enjoy the coastal scenery. In the port city of Xiamen, you'll discover unexpected excitement at every turn.



如果您有一个到访厦门的理由清单，那么里面有一条一定是鼓浪屿。鼓浪屿不仅是世界文化遗产，更有着“海上花园”和“万国建筑博览馆”的美誉。代表景点有日光岩，菽庄花园、鼓浪石、钢琴博物馆、郑成功纪念馆等，融历史、人文和自然景观于一体，与厦门岛内的厦门世茂海峡大厦、厦门大学隔海相望。

If you have a list of reasons to visit Xiamen, it must be Kulangsu. Kulangsu is not only the World Cultural Heritage, but also has the reputation of "Garden on the Sea" and "World Architecture Exhibition Hall". The representative scenic spots are Sunlight Rock, Shuzhuang Garden, Gulang Stone, Piano Museum, Memorial Hall of Zheng Chenggong, etc., which integrate history, culture and natural landscape, face to Xiamen Shimao Strait Tower and Xiamen University across the sea.



鼓浪屿
Kulangsu



厦门大学
Xiamen University

厦门大学依山傍海，因其秀美的风光和具有深厚历史底蕴的特色建筑，被誉为“中国最美大学校园”。校园中有芙蓉湖、情人谷和上弦场等景点，静谧而浪漫。走在校园里，你可以看到嘉庚风格的经典红色檐口建筑。它是闽南传统风格和西方风格的融合。它看似怪诞，却有着独特的风格，灵动而和谐。

Xiamen University situated at the foot of mountains and beside the sea. It is considered be one of the most beautiful universities in China for its fascinating scenery, together with its unique architecture. There are scenery on campus, such as Furong Lake, Valentine Valley and Shangxian Stadium, which are quiet and romantic. Walking in the campus, you can see the classic red corniced architecture of Tan Kah Kee style. It is a blend of the traditional style of southern Fujian and western style which shows a personalized culture.

在厦门最美好的事情之一就是骑上共享单车，沿着环岛路骑行。环岛路是厦门43公里长的绿色走廊和滨海环岛路，环绕着美丽的海岸线。西起胡里山炮台，东至厦门国际会议展览中心，途径轮渡、白城立交桥、厦大白城、胡里山炮台、椰风寨、珍珠湾等主要景点。

One of the best things to do in Xiamen is hop on a bike-share and cycle down Huandao Road, Xiamen's 43km-long green corridor and oceanfront ring road that hugs its beautiful coastline. It starts from Hulishan Fortress in the west and reaches Xiamen International Conference and Exhibition Center in the east. Passing by Lundu Ferry, Baicheng overpass, Hulishan Fortress, Yefengzhai, Pearl Bay and other major tourist attractions.



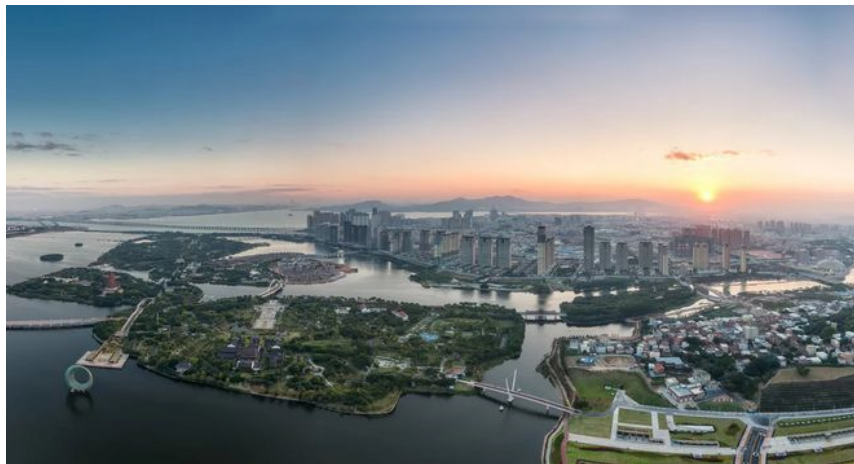
环岛路
Island Ring Boulevard



南普陀寺
Nanputuo Temple

南普陀寺位于厦门市东南方五老峰下，毗邻厦门大学，面临碧澄海港，因其优美的景观及建筑特色享誉盛名，是闽南佛教胜地之一。又因位于浙江舟山普陀山之南，故称南普陀寺。

Nanputuo Temple is located on the southeast of Xiamen city and the Wulao Peak is behind the temple. It is adjacent to Xiamen University and surrounded by the graceful sea. It is one of the Buddhist resorts in Southern Fujian, which enjoys a very high reputation for its picturesque view and architectural features. The general thought it was on the south of the Putuo Mountain of Zhejiang Province, hence the temple is given its present name.



集美区，位于福建省厦门半岛西北面，居闽南金三角中心地段。集美历史文化积淀极为丰富，“学在村中，村在学中”和独具的侨乡文化特色。集美区是著名华侨陈嘉庚先生的故乡，街上随处可见的中西合璧风格的“嘉庚建筑”别具韵味，亦成为闽南侨乡典型建筑的代表作。这里环境恬静幽雅，风光旖旎，陈嘉庚故居、鳌园、龙舟池、学村建筑群等都是独具闽南风韵的人文景观，年旅游人数近百万人次。

Jimei is on the side of the bank facing north Xiamen Island which has a rich history and vibrant culture. Jimei School Village, blending the Chinese architectural style with western one, has become a symbol of Jimei. As the residence of Mr. Tan Kah Kee, a famous overseas Chinese philanthropist who devoted himself wholly to education, Jimei is encircled by the sea on three sides with magnificent buildings combining western and oriental styles and picture-postcard sceneries.

厦门园林博览苑以广阔的杏林湾水域为背景，总面积10.82平方千米，其中水域面积接近全园面积的一半，被誉为“水上大观园”。这里常年花团锦簇，满径花香，不管是什么季节，都能寻得一番美景。

Xiamen Horticulture Expo Garden takes the Xinglin Bay as the background, with a total area of 10.82 square kilometers, of which the water area is nearly half of the total area of the park. The garden has been praised as "a grand showplace on water". There are flowers blooming all the year. No matter what season it is, you can see a beautiful scenery in here.



厦门园林博览苑
Xiamen Horticulture Expo Garden



集美学村
Jimei School Village

学校与社区自然融合，漫步龙舟池畔，走访百年学村、鳌园、陈嘉庚纪念馆等著名景点，在欣赏美景之余，也能一并窥见这里的文化历史，感受厦门独到的人文气息。

The school is naturally integrated with the community. Walking by the dragon boat pool, visiting famous tourist attraction such as century school village, Kah Kee Park and Tan Kah Kee Memorial Hall, you can also have a glimpse of both the cultural and history here while enjoying the beautiful scenery.

杏林湾海上自行车道位于厦门集美杏林湾岸线，全程长20.6公里，是以生态运动为主题的滨水休闲带。骑上单车，穿行于“空中自行车道”上，可尽情享受骑行的乐趣，领略杏林湾的无限风光。

Xinglin Bay Marine Bicycle Lane is located along the coastline of Xinglin Bay in Jimei district, with a total length of 20.6 kilometers. It is a waterfront recreational belt with the theme of ecological sports. Ride a bicycle on the "Sky Path", enjoy the fun of riding and unlimited scenery along the way.



杏林湾海上自行车道
Xinglin Bay Bicycle Marine Lane



集美鳌园
Jimei Turtle Garden

鳌园闻名遐迩，位于厦门市集美学村的东南之滨，三面临海，西接陆地，像一朵洁白的睡莲仰卧在水面上。由门廊、集美解放纪念碑、陈嘉庚墓和四周石雕围墙组成。鳌园原为一座小岛，形状似龟，岛上有一妈祖庙，故亦称鳌头宫。鳌园依图而建，图文并茂。集政治、经济、社会、文化、艺术、教育为一体是陈嘉庚先生“寓教于游、寓教于乐”理念的体现。抗日战争期间，该庙和集美学村一起毁于日军炮火。

Turtle Garden, formerly an island in the shape of a turtle, is located on the southeast coast of Jimei School Village in Xiamen city. It was designed and supervised to build by Tan Kah Kee and consists of three parts: the Portico, Jimei Liberation Monument and Tan Kah Kee's Mausoleum. You spontaneously feel awed by the spirit of Tan Kah Kee at Turtle Garden.

集美不仅文化底蕴深厚，还有众多地道美食小吃。比如闻名在外的“石鼓路”就是必去的一条街。美食琳琅、小吃遍布，沙茶面、姜母鸭、里脊肉串、板栗酥、仙豆糕等好料将带给您难忘的美食体验。

Jimei is not only rich in culture, but also has many traditional food and snacks. For example, the “Shigu Road” is definitely a must-go street with delicious food, snacks all around. Satay noodles, ginger duck, tenderloin satay, chestnut cake and bean cake will bring you a fantastic delicacy experience.



5公里以内团建推荐地 Team Building Venues Recommendation



CROWNE PLAZA®

洲际酒店集团旗下

XIAMEN JIMEI SEAVIEW

厦门集美海景皇冠假日酒店

目的地 Destination	距离 Distance
月美池公园 Yumei Park	< 100m
大明寺 Daming Temple	2.9km
马銮湾环湾带状公园 Maluan Bay Park	3.2km
园博苑 Horticulture Expo Garden	3.7km
杏林湾 Xinglin Bay	4km
202海鲜大排档 202 Seafood Restaurant	910m
临心园生态餐饮馆 Linxinyuan Ecological Restaurant	870m
阿钦大排档 A Qin Seafood Restaurant	550m





厦门集美海景皇冠假日酒店位于集美区杏滨路，临海面湖与自然相拥，四通八达，出则繁华，入则宁静，是洲际酒店集团在集美区的首家五星级高端会务酒店。作为国际高端酒店品牌，我们以专业、高效、灵活和彰显人性化的服务理念助您平衡工作与生活，激发您的灵感，开启摩登商旅新时代。

Crowne Plaza Xiamen Jimei Seaview is ideally situated along Xingbin Road in the upscale Jimei District, which is the first high-end MICE hotel under InterContinental Hotels Group in the district. The hotel enjoys a dual lake and sea backdrop that's a beautiful sight to behold. Inside you'll find serenity, while outside you'll experience the bold prosperity of Jimei.

As an international upscale hotel brand, we provide thoughtful design along with guest-focused services that help modern business travelers be productive, inspired and restored in pursuit of a successful work-life balance.

地理位置 Location



CROWNE PLAZA®

洲际酒店集团旗下

XIAMEN JIMEI SEAVIEW

厦门集美海景皇冠假日酒店

目的地 Destination	直线距离 Straight-line Distance	车程 (分钟) Drive (Minute)
厦门高崎国际机场 Xiamen Gaoqi International Airport	9km	24
厦门站 Xiamen Railway Station	10km	30
厦门北站 Xiamen North Railway Station	12km	25
厦门国际会议展览中心 Xiamen International Conference & Exhibition Center	16km	40
厦门园林博览苑 Horticulture Expo Garden	2.5km	10
杏林湾海上自行车道 Xiamen Marine Bicycle Lane	6km	14
集美学校 Jimei School Village	4.5km	10



地理位置 Location



CROWNE PLAZA®

洲际酒店集团旗下

XIAMEN JIMEI SEAVIEW

厦门集美海景皇冠假日酒店



酒店不仅在厦门市内交通便利，通往紧邻的漳州与泉州也十分方便，车程仅需1小时左右。漳州的东山岛、云水谣和南靖土楼闻名全国；泉州除了佛教圣地开元寺，宋元中国的世界海洋商贸中心更是成功被列入了世界文化遗产，团建游览性颇高。

Crowne Plaza Xiamen Jimei Seaview is also nearby Zhangzhou and Quanzhou. Zhangzhou is famous for Dongshan Island, Nanjing cloud water ballad and Tulou. And besides Kaiyuan Temple, Quanzhou's Emporium of the World in Song-Yuan China has been listed in the World Cultural Heritage recently. Both two cities are highly recommended for team building.



酒店拥有3000平方米规模各异、布局灵活的会议场地，共1间宴会厅和10间多功能厅及会议室，可从不同角度欣赏杏林湾海景和月美池公园的美景。其中1600平方米、层高9米的无柱式宴会厅，是您举办浪漫婚典及庆祝活动的尚佳之选。

We boast 3,000 square meters of meeting space that includes 1 Grand Ballroom and 10 multifunctional meeting rooms. Among these is our 1,600-square-meter, 9.0-meter ceiling grand ballroom that can easily accommodate 800 people (in banquet seating). The flexible space, complete with state-of-the-art audiovisual equipment, is designed to meet the needs of various scale conference activities, business gatherings and romantic wedding banquets.

宴会厅 Grand Ballroom

1600平方米，层高9米的无柱式宴会厅可分隔为3个小厅，满足您不同规模的活动需求。宴会厅配备完善的视听系统，典雅时尚的装饰风格让您轻松实现活动的各种创意。

Our 1,600-square-meter, 9.0-meter ceiling grand ballroom can be divided into three small rooms is designed to meet the needs of various scale activities and complete with state-of-the-art audiovisual equipment. Elegant and fashionable decoration style helps you to easily realize various creative activities.



多功能厅及会议室 Function and Meeting Rooms



CROWNE PLAZA®

洲际酒店集团旗下

XIAMEN JIMEI SEAVIEW

厦门集美海景皇冠假日酒店



10个中小型多功能厅及会议室，满足您单独会议或分组讨论的需要，其中位于22层的湾景22多功能厅，俯瞰杏林湾海景，适合举办各类高端酒会及派对。所有会议室均配备了先进的视听系统、高速无线网络和齐全的会议用品。

10 small and medium sized function and meeting rooms for individual meetings or group discussions. Among this, ROOF 22 function room with splendid seaveiw of Xinglin Bay, is a perfect venue to hold all kinds of upscale cocktail or wine party. All meeting rooms complete with state-of-the-art audiovisual equipment, high-speed wireless internet and a full range of conference supplies.



我们旨在帮助您成功地举办每个活动，从两小时的反馈服务到每日汇报，我们的皇冠会务总监会为您定制完善的活动方案来满足您的需求，并事无巨细地帮您打理每一个环节，助力您的活动尽善尽美。

We are devoted to hold each meetings and events successfully. From two-hour feedback service to a daily report, our Crowne Plaza Meetings Director and events team will create innovative, tailor-made plans to meet the needs as well as well-trained to handle all your meetings and events that ensure a wonderful time for you.



宴会区域容纳表 Capacity Chart



CROWNE PLAZA®

洲际酒店集团旗下

XIAMEN JIMEI SEAVIEW

厦门集美海景皇冠假日酒店

楼层 Floor	区域名称 Area	高 Height (m)	长 Length (m)	宽 Width (m)	面积 Sq. Meters	宴会式 Banquet	酒会式 Reception	剧院式 Theatre	课桌式 Classroom	董事会 Boardroom	U型 U-Shape	口字型 Hollow Square
3F	宴会厅 Grand Ballroom	9	50	32	1,600	780	1,100	1,155	810	/	/	/
	宴会厅 Ballroom 1	9	28	18	510	200	360	300	216	/	/	/
	宴会厅2 Ballroom 2	9	32	18	580	240	380	330	234	/	/	/
	宴会厅3 Ballroom 3	9	28	18	510	200	360	300	216	/	/	/
	宴会厅+2 (2+3) Ballroom 1+2 (2+3)	9	34	32	1,090	420	740	660	513	/	/	/
	宴会厅前厅 Foyer	9	50	8	385	180	260	/	/	/	/	/
	多功能厅1 Function Room 1	4	14	10	138	80	100	90	60	27	27	30
	多功能厅2 Function Room 2	4	14	10	138	80	100	90	60	27	27	30
	多功能厅+2 Function Room 1+2	4	20	14	276	160	220	130	96	48	48	54
4F	会议室1 Meeting Room 1	4	10	9	90	40	50	50	36	24	24	30
	会议室2 Meeting Room 2	4	10	9	90	40	50	50	36	24	24	30
	会议室3 Meeting Room 3	4	10	9	90	40	50	50	36	24	24	30
	会议室4 Meeting Room 4	4	10	9	90	40	50	50	36	24	24	30
	会议室+2 Meeting Room 1+2	4	20	9	180	80	100	148	72	48	48	54
	会议室3+4 Meeting Room 3+4	4	20	9	180	80	100	148	72	48	48	54
	会议室5 Meeting Room 5	4	10	9	90	/	/	/	/	15	/	/
	会议室6 Meeting Room 6	4	20	10	200	100	120	130	99	60	52	60
22F	湾景22多功能厅1 ROOF 22 Function Room 1	6	33	8	264	120	130	140	108	66	66	72
	湾景22多功能厅2 ROOF 22 Function Room 2	6	18	8	144	100	100	100	81	42	42	48
	湾景22多功能厅+2 ROOF 22 Function Room 1+2	6	51	8	408	220	240	270	204	114	114	120

3F 宴会厅平面图 3F Grand Ballroom Floor Plan

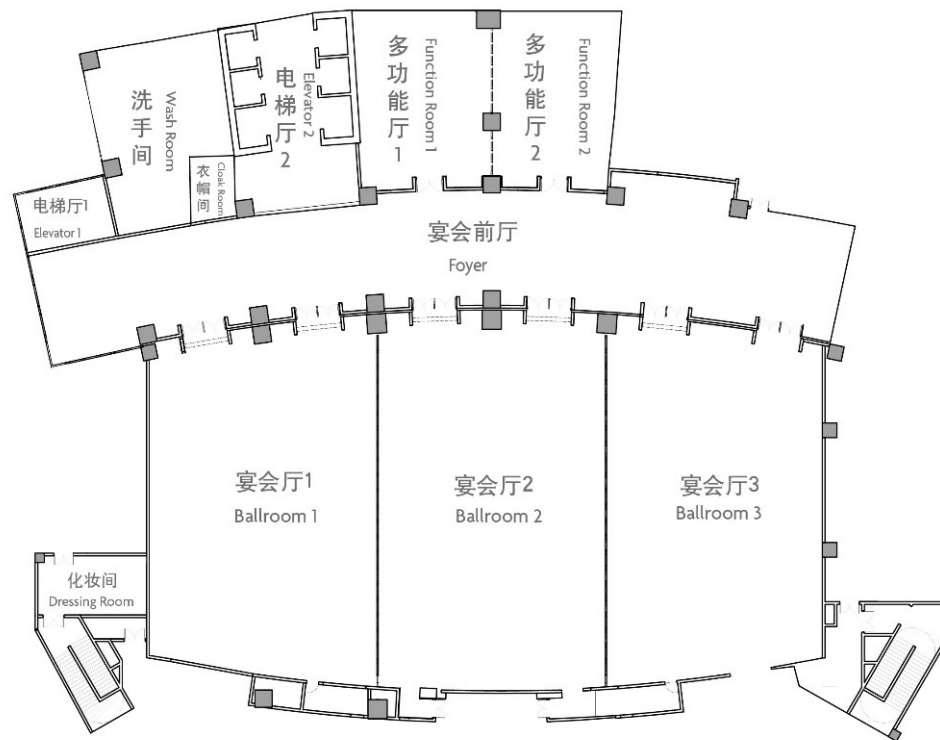


CROWNE PLAZA®

洲际酒店集团旗下

XIAMEN JIMEI SEAVIEW

厦门集美海景皇冠假日酒店



4F 会议室平面图 4F Meeting Room Floor Plan

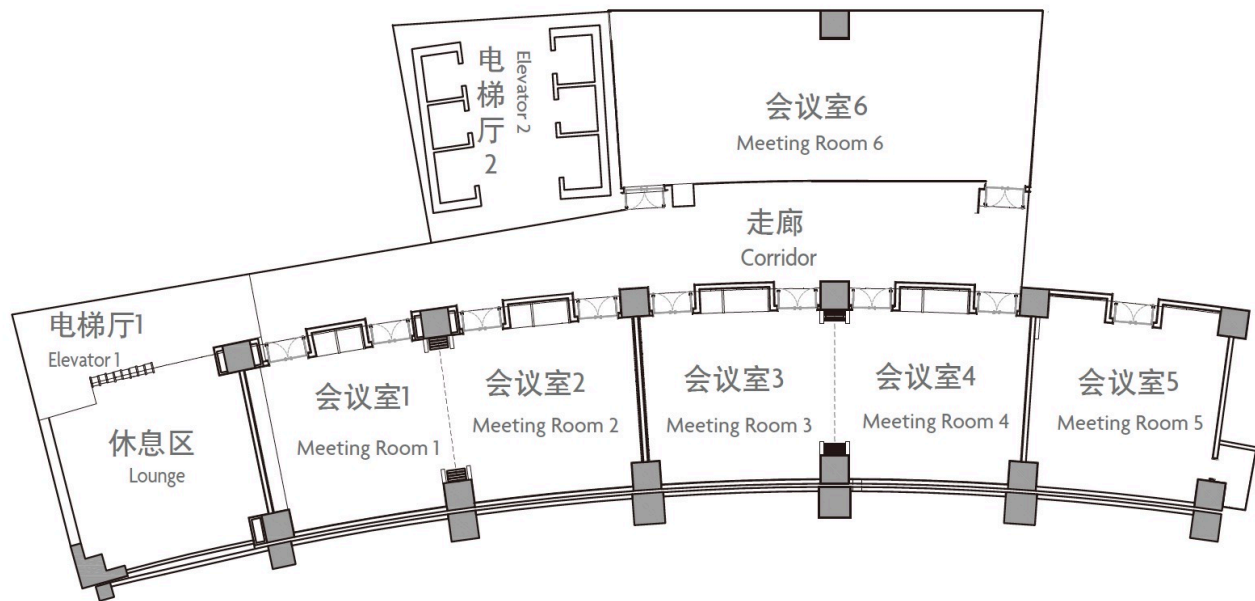


CROWNE PLAZA®

洲际酒店集团旗下

XIAMEN JIMEI SEAVIEW

厦门集美海景皇冠假日酒店



22F 多功能厅平面图 22F Function Room Floor Plan

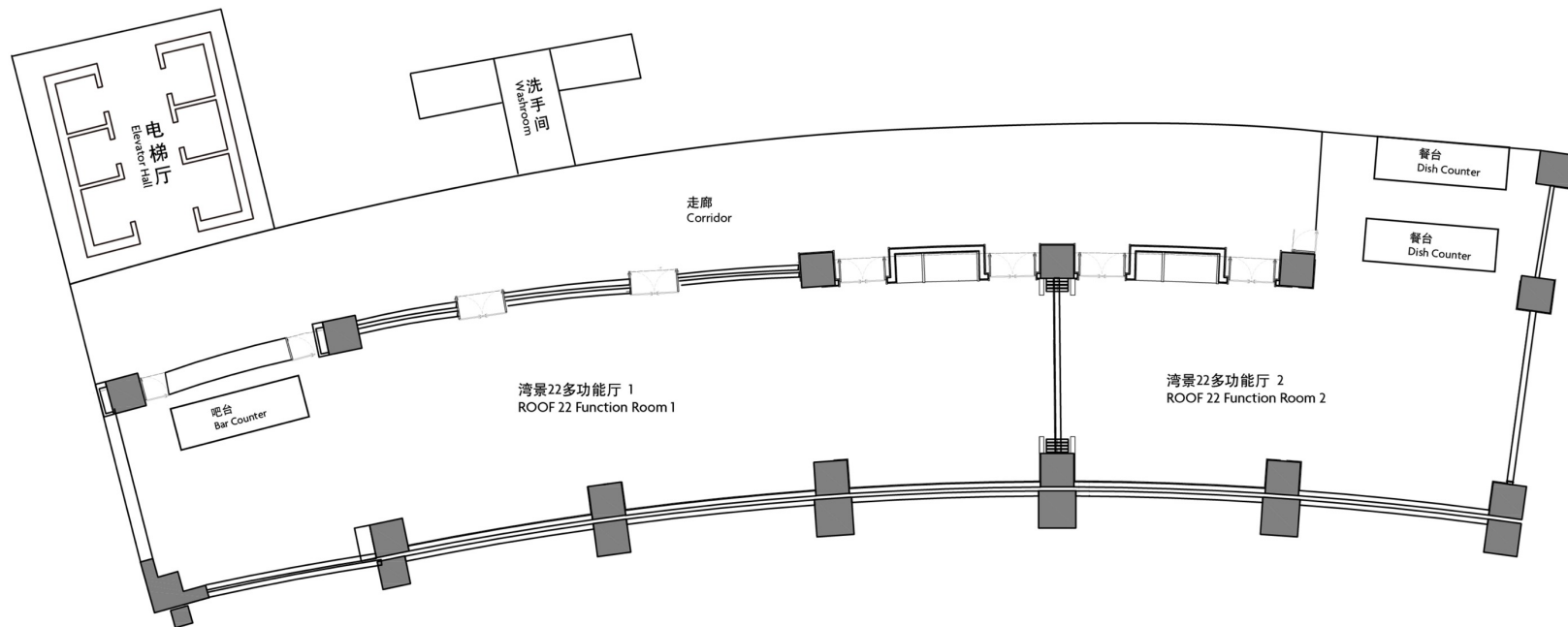


CROWNE PLAZA®

洲际酒店集团旗下

XIAMEN JIMEI SEAVIEW

厦门集美海景皇冠假日酒店





悦美全日餐厅 JOY All Day Dining

朝凤轩中餐厅 Chao Feng Xuan Chinese Restaurant

大堂酒廊 Lobby Lounge

皇冠假日贵宾酒廊 Crowne Plaza® Club Lounge



- 位于一层 Located on 1F
- 汇聚亚洲及世界各国美食，中西式美味完美结合 Converge the delicacy from Asia and all around the world, which perfectly combined Chinese and Western gourmet
- 现代开放式厨房 Modern open kitchen
- 提供零点菜单 Offer a la carte menu

营业时间 Business Hours

自助早餐 Buffet Breakfast 06:30-10:30

自助晚餐 Buffet Dinner 17:30-21:00 周六、周日 Saturday & Sunday

送餐服务 In-room Dining 06:30-23:00





- 位于一层 Located on 1F
- #非正式#办公空间，方便您随时会客与商务洽谈

Plaza Workspace elaborately designed in Lobby Lounge make your business negotiation easy to go

营业时间 Business Hours

10:00-23:00

朝凤轩中餐厅 Chao Feng Xuan Chinese Restaurant



CROWN PLAZA®

洲际酒店集团旗下

XIAMEN JIMEI SEAVIEW

厦门集美海景皇冠假日酒店

- 位于二层 Located on 2F
- 拥有6个私人包厢 Offer 6 delicate private dining rooms
- 以粤菜为主打，并结合厦门本地的饮食文化，推出经典与创新的风味美饌宴飨宾客 Well versed in the art of Chinese cuisine with main stream from Cantonese to local specialty dishes to present classic and innovative delicacies to guests



营业时间 Business Hours

午餐 Lunch 11:30-14:00

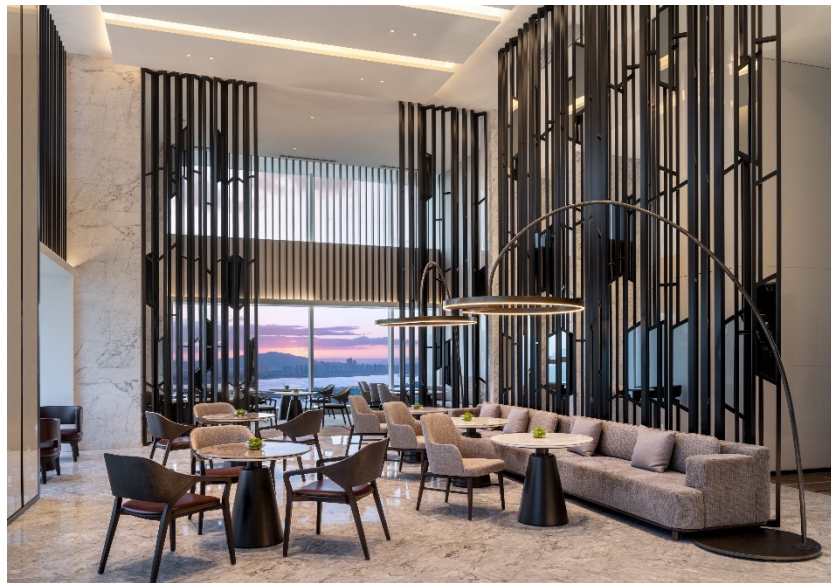
晚餐 Dinner 17:30-21:30



- 位于22层 Located on 22F
- 为行政楼层客人提供全日咖啡和茶、下午茶以及欢乐时光鸡尾酒 Offers complimentary all-day tea and coffee, afternoon tea and happy hour cocktail to the guests from executive floors

营业时间 Business Hours

12:00-21:00





酒店拥有303间新一代设计的“摩登商旅”客房及套房，均可饱览旖旎的海景或波光粼粼的湖景。我们深谙现代商旅有志之士的诉求，精心规划的工作区以及多功能沙发区，可令您在工作、会议和休闲三种模式中任意切换，灵活高效。

The hotel offers 303 rooms and suites, all boasting the Crowne Plaza WorkLife room design and featuring beautiful sea or lake views. WorkLife rooms cater to the needs of the modern business traveler. This includes a cleverly designed work-rest area with multi-function sofa nook, allowing you to move seamlessly between work, meeting and leisure modes.

高级房 Standard Room


CROWNE PLAZA[®]
洲际酒店集团旗下
XIAMEN JIMEI SEAVIEW
厦门集美海景皇冠假日酒店



高级海景房 Standard Seaview Room



CROWNE PLAZA®

洲际酒店集团旗下

XIAMEN JIMEI SEAVIEW

厦门集美海景皇冠假日酒店



精致套房 Junior Suite

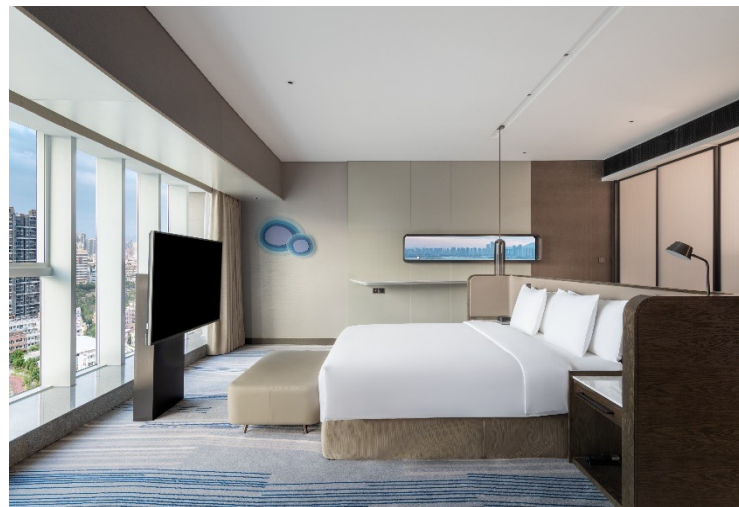


CROWNE PLAZA®

洲际酒店集团旗下

XIAMEN JIMEI SEAVIEW

厦门集美海景皇冠假日酒店





房型 Room Category	面积 Size (sqm.)	数量 Qty
高级大床房 1 King Bed Standard	45	29
高级双床房 2 Twin Beds Standard	45	55
高级海景大床房 1 King Bed Standard Seaview	45	40
高级海景双床房 2 Twin Beds Standard Seaview	45	51
高级行政大床房 1 King Bed Standard Club	45	31
高级行政双床房 2 Twin Beds Standard Club	45	35
家庭大床房 1 King Family Room	60	5
豪华行政大床房 1 King Bed Premium Club	60	10
精致套房 1 King Bed Junior Suite	65-70	22
精致行政套房 1 King Bed Junior Suite Club	65-70	8
豪华套房 1 King Bed 1 Bedroom Suite	108	14
皇家套房 1 King Bed 1 Bedroom Royal Suite	200	1
无障碍双床房 2 Twin Beds Mobil Access Roll Shwr	45	2
总计 Total		303

* 最大双床数 Maximum NO. of Twin Bed Rooms: 172

康体设施 Wellness Facilities



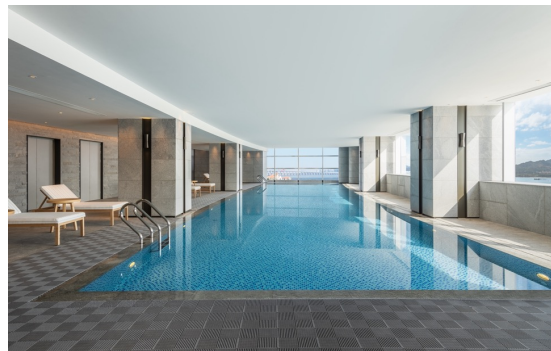
CROWNE PLAZA®

洲际酒店集团旗下

XIAMEN JIMEI SEAVIEW

厦门集美海景皇冠假日酒店

泳池 Swimming Pool



健身房 Gym



水疗中心 SPA





- 集美区是福建著名侨乡及高校集中区，历史底蕴及文化氛围浓厚；为厦门文化娱乐产业发展中心（影视拍摄，艺术展览，研学等）
 - 集美区第一家洲际集团旗下的五星级酒店
 - 靠近动车枢纽“厦门北站”，交通便利
 - 方便到达周边杏林工业区及海沧新阳工业区
 - 酒店所有客房前看海，后面湖，绝佳的景观
 - 45平方米的基础客房，全新皇冠假日2.0摩登商旅风格，适合商务及会务客人
 - 1600平方米的宴会场地，挑高9米；设计现代简约
 - 22层全海景湾景22多功能厅，总面积408平方米，可分隔成两个厅，适合接待高端酒会聚会活动
 - 高端完善的设施设备
-
- Jimei District is a well-known hometown of overseas Chinese and a concentrated area of colleges and universities in Fujian. It has a strong historical heritage and cultural atmosphere. It is the development center of Xiamen's cultural and entertainment industry (film shooting, art exhibition, research, etc.)
 - The first five-star hotel under the InterContinental Hotels Group in Jimei District
 - Close to the EMU hub "Xiamen North Station" with convenient transportation
 - Convenient to reach Xinglin Industrial Zone and Haicang Xinyang Industrial Zone
 - All guest rooms enjoys a dual lake and sea backdrop that's a beautiful sight to behold, excellent views
 - 45 square meters of basic guest rooms, brand new WorkLife style, suitable for business and conference guests
 - 1,600 square meter Grand Ballroom, 9 meters height; elegant and fashionable design
 - ROOF 22 function room (408 m²) with splendid sea view of Xinglin Bay, can be divided into 2 areas, which is suitable for upscale cocktail party.

联系我们 Contact Us

皇冠会务总监 Crowne Plaza Meetings Director

赵雅燕 Elyn Zhao

电话 T: (86) 592 267 6666

手机 M: (86) 159 8077 6696

邮箱 E-mail: elyn.zhao@crowneplazaxm.com



CROWNE PLAZA®

洲际酒店集团旗下

XIAMEN JIMEI SEAVIEW

厦门集美海景皇冠假日酒店



扫码即刻预订

Scan to Start Your Meeting Journey



CROWNE PLAZA®

洲际酒店集团旗下

XIAMEN JIMEI SEAVIEW

厦门集美海景皇冠假日酒店

谢谢

Thank You

