



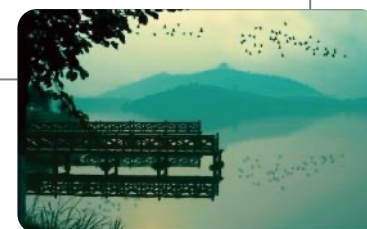
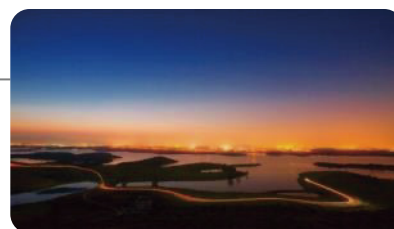
东莞松山湖凯悦酒店
Hyatt Regency Dongguan



东莞的湖畔后花园 The Garden of Dongguan

东莞松山湖凯悦酒店座落于国家级规划项目松山湖科技产业园松湖烟雨风景区
酒店建筑群矗立于松山湖畔，湖水环绕，绿树成荫。
这里，是东莞的湖畔后花园。

Hyatt Regency Dongguan is situated in the centre of the newly developed commercial district created around the Dongguan Song Shan Lake Science and Technology Park. Located along the waterfront of the beautiful Song Shan Lake, which provides some of the best waterscape views in the area.



交通便利 Transportation

东莞位处珠江三角洲经济圈的中心地带
拥有高速快捷便利的交通网络

Hyatt Regency Dongguan is truly an oasis of serenity in the
Pearl River Delta.



距离常平火车站约30分钟，可
乘坐广深和谐号列车及广九直
通车

Approx. 30mins to Guangzhou
City where travelers can take
Guangzhou-Shenzhen Train or
Guangzhou-Kowloon Train



距离虎门高铁站约45分钟车程，
可到武汉，北京等地
Approx. 45mins to Humen High
Speed Station from where
travelers can reach to Wuhan,
Beijing etc.



距离深圳皇岗口
岸约60分钟
Approx. 60mins
to Shenzhen
Huanggang Port



距离广州白云机
场约90分钟
Approx. 90mins
to Guangzhou
Airport



距离深圳宝安机
场约50分钟
Approx. 50mins to
Shenzhen Airport



距离香港国际机
场约120分钟
Approx. 120mins
to Hong Kong
Airport

松山湖候机楼班次 Song Shan Lake Terminal Shuttle Service

松山湖城市候机楼距离东莞松山湖凯悦酒店仅有**10分钟**车程，
为客人往返机场与酒店提供便利。

Song Shan Lake Terminal only 10 mins by car from hotel.

1、松山湖城市候机楼往返深圳宝安机场每天18班

Song Shan Lake Terminal to and from Shenzhen Airport

松山湖城市候机楼发车时间Time:

6:00 7:00 7:30 8:00 9:00 9:30 10:30 11:30 12:00
12:30 13:30 14:00 14:30 15:30 16:30 17:30 18:00 19:00

深圳宝安机场发车时间Time :

8:30 9:00 9:30 10:00 11:00 11:30 12:30 13:30 14:00
15:00 15:30 16:00 17:00 18:00 19:00 20:00 20:30 21:30

*松山湖城市候机楼→深圳宝安机场单向车程70分钟

2、松山湖城市候机楼往返广州白云机场每天12班

Song Shan Lake Terminal to and from Guangzhou Airport

松山湖城市候机楼发车时间Time:

6:10 7:10 8:10 9:10 10:10 11:10
12:10 13:10 14:10 15:10 16:10 18:10

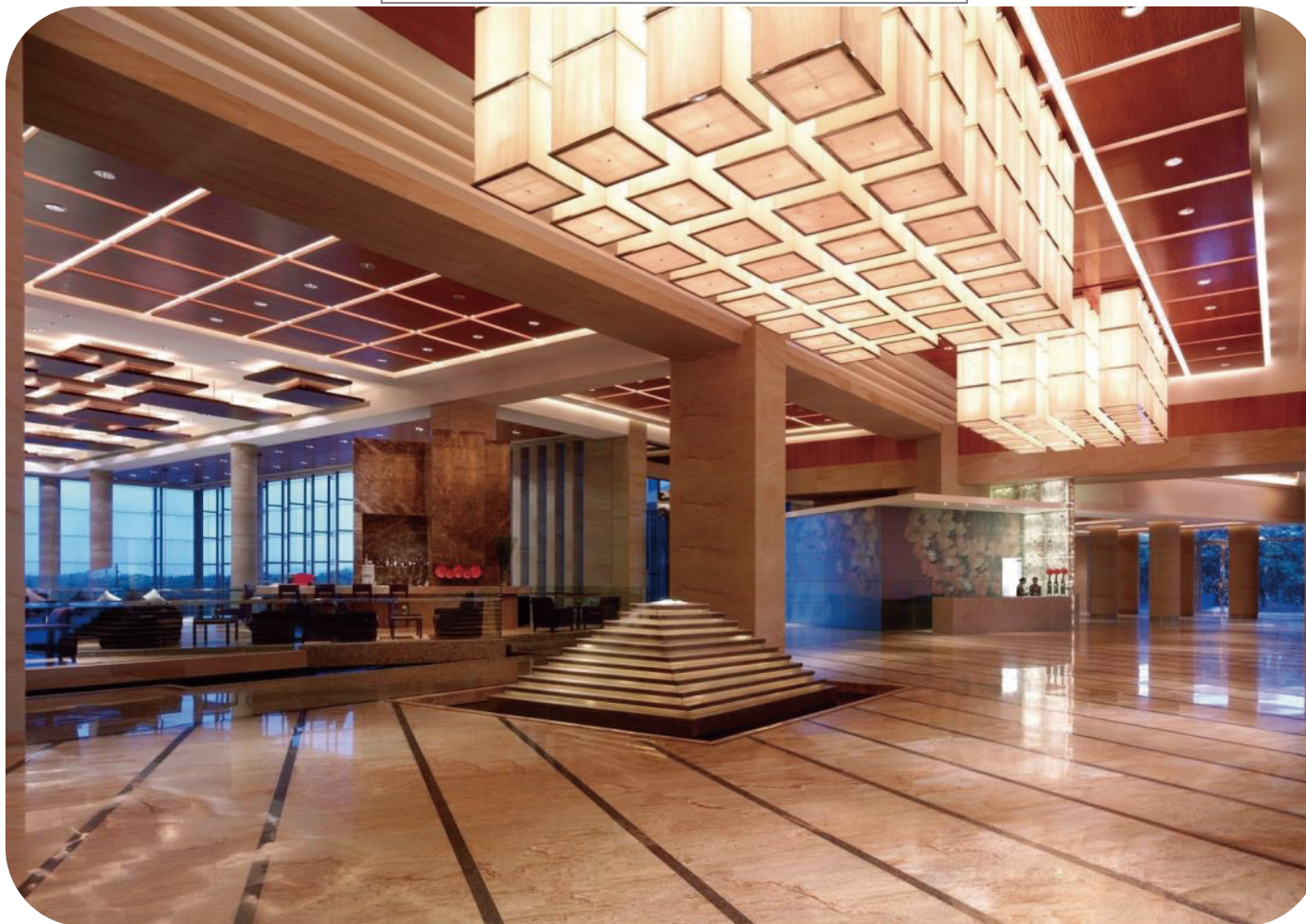
广州白云机场发车时间Time :

9:00 10:10 11:30 12:30 13:40 14:40
15:50 16:50 17:40 18:50 20:10 21:20

*松山湖城市候机楼→广州白云机场单向车程110分钟



非凡的空间享受
Special Space Feeling



无柱式大堂设计，自然通透的空间和设计线条的简约，感觉恍若置身宽广的户外
Hotel no pillar lobby with spacious visual effect provides a comfortable environment for guests. .

Lobby 酒店大堂

客房设施及服务 Guest Room

*所有客房设有独立阳台

Each room features a private balcony.

*大理石浴室设有独立浴缸及玻璃屏淋浴间

Marble bathroom with separate bathtub and rain shower.

*湖景客房设置露天豪华浸浴池

Open-air bath tub in selected guestrooms allowing guests to relax in the scenery of Song Shan Lake.

*嘉宾轩客房以上房型可享行政酒廊体验及礼遇

Regency Club Guest can enjoy the breakfast and Cocktail for free.

*液晶纯平电视及卫星频道

LCD flat-screen television with Satellite Channels.

*房内配备JBL蓝牙音箱

JBL Bluetooth audio in guest rooms.

*房内私人电子保管箱

Personal safety box in guestroom.

*配备母婴室及残障人士专用客房

Equipped Nursing room with Special guest room for disable guest.



客房房型 Room Count

房 型	Room Type	面 积(m ²)	总 计
凯悦客房园景大床	KING	48	87
凯悦客房园景双床	TWIN	48	42
凯悦湖景客房大床	1VWK	48	59
凯悦湖景客房双床	1VWT	48	44
嘉宾轩园景客房大床	CLBK	48	30
嘉宾轩园景客房双床	CLBT	48	6
嘉宾轩湖景客房大床	CLVK	48	14
嘉宾轩湖景客房双床	CLVT	48	2
嘉宾轩园景套房大床	RGSK	70	4
嘉宾轩湖景套房大床	RGVK	90	26
嘉宾轩湖景套房双床	RGVT	70	1
至尊套房	RGXK	135	3
外交官套房	DIPL	180	1
总统套房	PRES	780	1
总计			320



园景客房 Guest Room

酒店共有87间时尚雅致的客房，内均铺设古色古香的原木地板，拥有配备高速宽带网络的工作台、多频道LCD液晶屏面电视、私人保险箱等先进设施、大理石铺设的宽敞浴室及独立的雨林淋浴间。

Hotel features 87 stylishly appointed guestrooms, a soothing balcony makes all the guestrooms comfortable, Advanced technology is featured in all guestrooms, including an LCD flat-screen TV and spacious work desks equipped with broadband Internet access.

客房 Accommodations



湖景客房 Lake View Rooms

所有房间都拥有一个宽敞露台，可以观看绿意盎然的园林景观或悠远静美的湖景，其中大部分湖景客房的露台上还设有舒适的浸浴池，可以尽情地欣赏松山湖的迷人美景。

A balcony with an oversized sunken bathtub, allowing guests to enjoy a breath-taking view of the Song Shan Lake.

客房 Accommodations



嘉宾轩 Regency Club

七层嘉宾轩行政客房内设专用湖景酒廊，宾客可以一边俯瞰松山湖美景，一边享用免费的欧陆式自助早餐、黄昏鸡尾酒及精美小点。

The lake-view Regency Club Lounge enhances guests' experience, along with the daily complimentary Continental breakfast, all-day refreshments, and evening canapés and cocktails.



凯悦天地 World of Hyatt

加入“凯悦天地”忠诚旅客计划，在全球任何一家凯悦集团旗下酒店享受专属礼遇和无日期限制的积分兑换房晚，感受快意无限的交游之乐、领略妙趣无穷的精彩体验。无论前往何处旅游，您的会籍都会令您的住宿难以忘怀。更多详情，请登录worldofhyatt.com

Join the World of Hyatt Global Frequent Guest Program and enjoy exclusive benefits and room nights at Hyatt hotels worldwide. For more information, please refer to worldofhyatt.com

会议及宴会 Convention & Event



会议 Convention

提供超过2500平方米的会议场地，共有11个会议室，无柱式设计的大宴会厅可容纳千人会议，充足的自然光，开阔的空间灵活的设施是会议宴会商务洽谈的理想之所，所有会议室都在同一楼层，并有商务中心紧邻会议场地，为宾客提供更多高效便利的商务服务。

The hotel can offers more than 2,500 sq m of meeting space to cater to all conference requirements, including one ballroom with natural daylights and 11 multi-functional meeting rooms, perfectible for conferences, conventions or meetings. The business center provides a convenience service for the business guests.

宴会 Events

会议设施容量表

Function Room Capacity Chart

场地容量表								
会议室	场地面积 长度×宽度×高度	平方米	宴会式	酒会式	剧院式	课室式	U-型	回型
宴会厅	134.5' × 68.8' × 20.6' 41m × 21m × 6.3m	9,267.7 861	480	1000	960	600	—	—
宴会厅1及2	85.3' × 68.8' × 20.6' 26m × 21m × 6.3m	5877 546	300	550	540	360	—	—
宴会厅3	68.8' × 49.2' × 20.6' 21m × 15m × 6.3m	3,390.6 315	180	320	250	160	66	84
礼宾厅	118.1' × 29.1' × 18.7' 36m × 8.9m × 5.7m	3,444.4 320	160	320	370	200	—	—
礼宾厅1/2/3/4	29.1' × 29.5' × 18.7' 8.9m × 9m × 5.7m	961.1 80	40	80	84	45	27	36
礼宾厅1+2/3+4	58.2' × 29.5' × 18.7' 17.8m × 9m × 5.7m	1,922.2 160	70	160	158	80	60	72
贵宾厅	81.9' × 29.1' × 20.6' 25m × 8.9m × 6.3m	2,400.3 223	140	200	230	100	60	66
贵宾厅1	29.1' × 25.5' × 20.6' 7.8m × 8.9m × 6.3m	742.6 69	30	60	70	27	18	24
贵宾厅2	58.9' × 29.1' × 20.6' 18m × 8.7m × 6.3m	1679 156	90	160	160	72	36	42
凯悦厅1	42.6' × 26.9' × 14.4' 15.2m × 8.7m × 4m	1,453 135	60	120	120	63	36	42
凯悦厅2	29.1' × 28.7' × 14.4' 8.9m × 8.8m × 4m	839.6 78.3	40	80	84	45	27	36
董事会议厅	32' × 22.2' × 14.4' 9.8m × 6.8m × 4m	716.8 66.6	固定12个位置					
VIP休息厅	25.5' × 14' × 10.4' 7.8m × 4.3m × 3.2m	360.6 33.5	配有舒适沙发设置					

东莞松山湖凯悦酒店会议设施
Hyatt Regency Dongguan - Meeting Facility

A Zone Room

A区客房

VIP ROOM
VIP室

BALLROOM FOYER
宴会厅前厅

DRIVING ROOM
贵宾厅

BALLROOM
宴会厅

LOBBY
酒店大堂

BUSINESS CENTER
商务中心

BOARDROOM
董事会议厅

B Zone Room

B区客房

THE TEPPANROOM
铁板

REGENCY 2
凯悦厅2

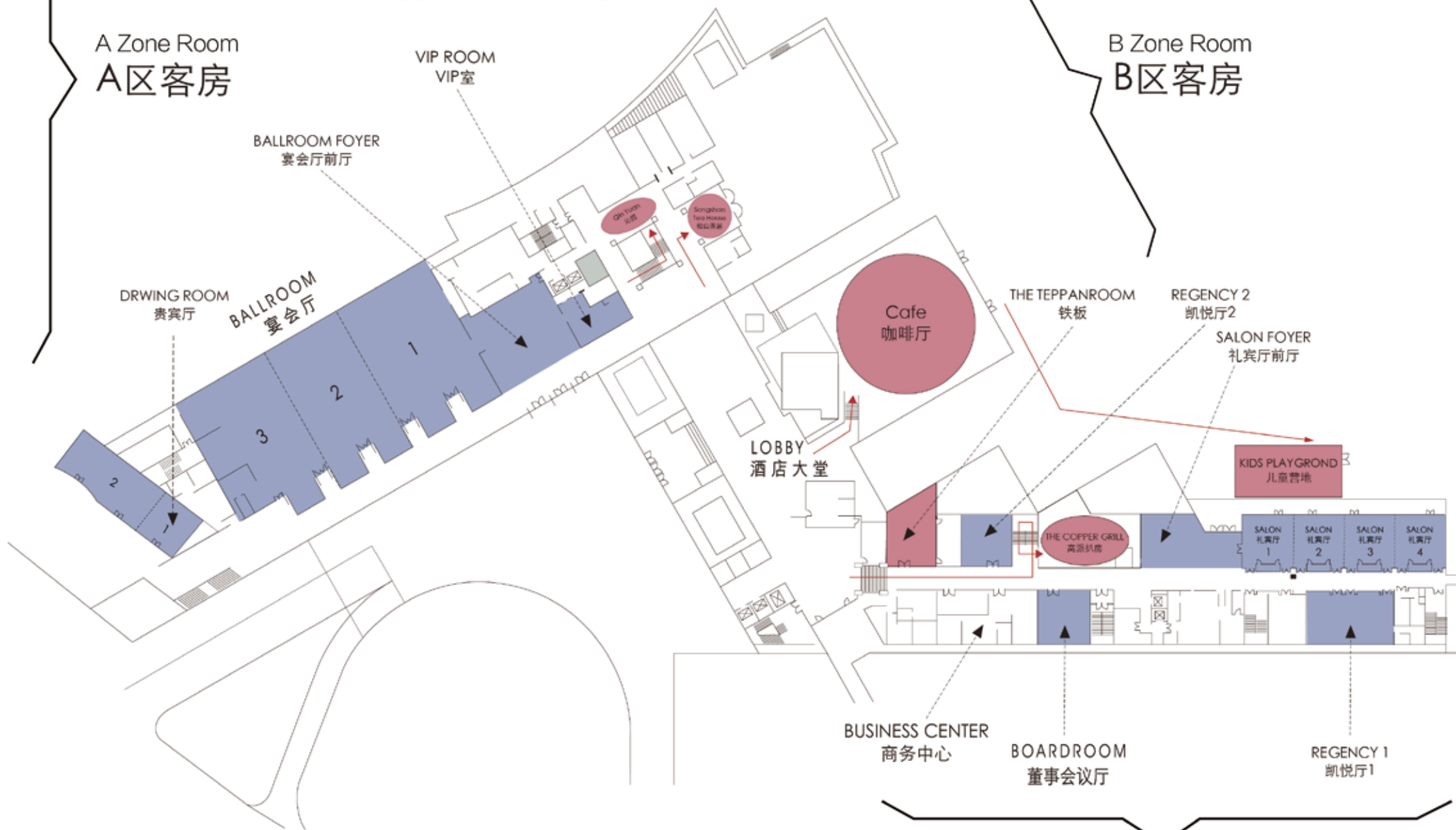
SALON FOYER
礼宾厅前厅

KIDS PLAYGROUND
儿童营地

REGENCY 1
凯悦厅1

C Zone Room

C区客房



宴会厅 Ballroom



- 宽敞外围走廊，适用于主题展示或会间茶歇
- 200平方米前厅，适用于签到区或鸡尾酒会
- The public corridor area for exhibition and refreshment.
- 200 square of pre-function area is idea for reception and cocktail.

- 861平方米，无柱式设计，层高6.3米
- 可灵活分隔为315平方米和546平方米
- 超大落地玻璃窗，自然采光可观湖景
- 861 sq m of function space, column- free, height is 6.3m.
- Can be divide into a 315 sq m and 546 sq m.
- Floor-to-ceiling glass window, natural lighting.



礼宾厅 Salon



- 320平方米礼宾厅，层高5.7米
- 可容纳剧院形式200人，宴会形式200人
- 可分成4个80平会议室使用
- 落地玻璃窗，充足自然采光



- 320 sq m of Salon, height is 5.7m.
- Can accommodate up to 200 guests in a theater setting or banquet setting.
- The Salon is divisible into four separate sections of 80 sq m.
- Floor-to-ceiling glass window, natural lighting.

凯悦厅 Regency Room



- 80至135平方米的凯悦厅，可满足不同小型会议需求
- 80 to 135 sq m of Regency room, can cater to any small event, varying from a cozy gathering to a formal meeting.

- 高速的网络，先进的视听设备以及专业的会议宴会策划和执行团队
- High-speed Internet, advanced audio-visual equipment, professional conference banquet planning and excellent execution team.



团队建设 Team Building



- 超过6000平方米的草坪荔枝林，适用于真人CS，非洲鼓等定向类户外项目
- The Lychee garden covers in excess of 6000 square meters, suitable for Paintballing, African drum and other directional outdoor projects.

池畔草坪 Lakeside lawn

- 占地1200平方米的多功能篮球场，适用于各类团队建设项目
- The multifunctional court occupies an area of 1200 square meters, suitable for various team building.

篮球场 Basketball court



餐厅及酒吧
Restaurants & Bar



大堂酒吧 Lobby Lounge



咖啡厅 Café



高派扒房 The Copper Grill



沁园 Qin Yuan



松山茶居 Song Shan Tea House



铁板 The Teppan room

大堂酒吧 Lobby Lounge



浮岛式大堂酒吧，，感受无限空间与时尚、自然的融合，是观赏松山湖景致的好去处，并于每天下午2点至6点提供精美的甜点下午茶。

Located in the hotel lobby, the Lobby Lounge is the perfect venue for business or social gatherings, and provide set menu afternoon tea from 2pm-6pm daily.



咖啡厅 Café

咖啡厅以多个开放式厨房为特色，可容纳约200位客人，提供各种国际特色的自助餐。内部木质格间的设计，让客人在保留私人空间的同时，又能欣赏松山湖自然美景，高达17米的落地玻璃窗，纳采天然光照。

Café, a stylish all-day dining restaurant featuring international cuisine and local delicacies, with its multiple open kitchens, offering varieties of buffets. It could accommodate around 200 guests.



高派扒房 The Copper Grill

高派扒房是一个西餐厅，荔林在侧，
特色玻璃酒窖里收藏着上百种
不同品牌的葡萄酒



更有特色荔枝原木烤炉，
美味的澳洲进口牛扒、海鲜等
多款独特欧式美食



The Copper Grill is a traditional western
restaurant, which is the nice place to choose
from a wide array of sumptuous steaks and
The fresh seafood.



沁园由28间高级私人厢房组成，其中的湖景厢房外带休闲院落，客人置身其中可以近距离接触松山湖天然美景。沁园采用复古中式设计，客人可享用到高雅别致的粤菜。

Qin Yuan, an exquisite venue serving Cantonese cuisine, features 28 private dining suites with chic design, including two exclusive suites with a lake view terrace.



沁园 Qin Yuan



松山茶居融入岭南茶文化和“大排档”概念，开放式的布局让宾客以放松的状态，品味地道的家庭式粤菜和东莞的特色美食。

Song Shan Tea House, a casual and contemporary Chinese restaurant in Hyatt Regency Dongguan with an open-kitchen concept serving Cantonese family cuisine.



松山茶居
Song Shan Tea House



铁板融合质朴的日本“乡村酒馆”概念，为客人提供互动的日式餐饮体验。客人可享受由厨师即席以纯熟的烹饪技巧，将新鲜应季食材炮制成美味铁板烧料理，是酒店崭新的餐饮之选。

The Teppanroom provides an interactive dining experience in a rustic country-inn style Japanese setting, where guests can watch tableside as chefs transform fresh seasonal ingredients into delicious dishes on the teppanyaki grill.



铁板 The Teppanroom

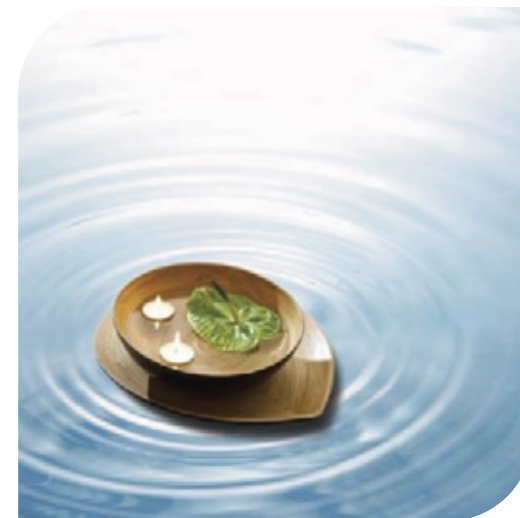


荔之吧 Lychee Bar

荔之吧是一个有情调的鸡尾酒吧，充满自然元素的桌台、荔枝红作外饰的高脚椅、开放式吧台和乐队现场演绎与荔枝林完美的融合在一起，犹如景中景。提供小吃、鸡尾酒和各式饮品，并有驻店乐队现场激情表演。



The Lychee Bar serves a selection of premium beverages along with a wide range of light Japanese specialities, special snacks and live performance by resident band.



松池水疗中心透过各式以自然为尚的水疗疗程，为您提供分健体宁静的享受。设有桑拿、蒸气室、按摩浴池、冷热水池、足部按摩室、7间设施齐备的水疗套房等设施。

Song Spa Centre offers spa pools, sauna room, as well as specially designed relaxation areas, and private treatment suites and rooms.



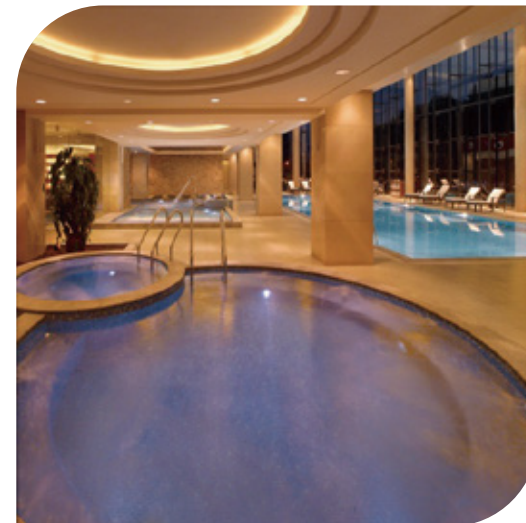
Song Spa
松池水疗中心



占地1800平方米的室外无边际游泳池与松山湖紧密相连，更有设备齐全的健身房和室内恒温游泳池、室外网球场（提供教练服务），多功能运动球场，室内乒乓球室，桌球，射箭，儿童营地等多种康体活动。

The Fitness Centre with an indoor heated swimming pool and a fully equipped gymnasium. For families, our outdoor infinity swimming pool features fascinating water slides that should not be missed. Other facilities entertainments include two outdoor tennis courts (with coaching available), a multi-purpose court, table tennis, pool table, archery and children playground.

健身娱乐设施 Entertainments





区域游玩指南 Area Guide

松湖烟雨（距离酒店100米）
 万科生活广场（距离酒店0.5公里）
 星星国际电影城（位于万科生活广场内）
 松山湖图书馆（距离酒店2公里）
 梦幻百花洲（距离酒店3公里）
 松湖广场音乐喷泉（距离酒店5公里）
 东莞香市动物园（距离酒店11公里）

Misty Rains of Song Shan Lake (100m)
 Wanke Life Plaza (0.5km)
 Xingx International Cinema (Inside Wanke Life Plaza)
 Song Shan Lake Library (2km)
 Dream Garden (3km)
 Song Shan Lake Musical Fountain (5km)
 Dongguan Xiangshi Zoo (11km)



HYATT
REGENCY

DONGGUAN

东莞松山湖凯悦酒店

中国广东省东莞市松山湖高新技术产业开发区沁园路
Song Shan Lake National High-tech Industrial Development Zone, Qinyuan Road,
Dongguan 523808, Guangdong, People's Republic of China.
TELEPHONE +86 769 2289 1234 FACSIMILE +86 769 2289 8666
dongguan.regency.hyatt.com