



CROWNE PLAZA®

HOTELS & RESORTS

皇冠假日酒店及度假村

IHG® 旗下酒店

武汉光谷
皇冠假日酒店
Crowne Plaza
Wuhan Optics Valley





CROWNE PLAZA®

HOTELS & RESORTS

皇冠假日酒店及度假村

IHG® 旗下酒店

武汉光谷皇冠假日酒店
CROWNE PLAZA WUHAN OPTICS VALLEY
成就高效商旅
MAKING BUSINESS TRAVEL WORK

关于武汉光谷皇冠假日酒店

About Crowne Plaza Wuhan Optics Valley



从三千年前的盘龙城到今时的九省通衢繁华都城，武汉，厚重的历史和蓬勃生机交相辉映，散发着无穷魅力。聚焦世界目光的“中国光谷”——武汉东湖新技术开发区，更为城市增添耀眼的创新光芒。

武汉光谷皇冠假日酒店精心择址于光谷金融中心，作为国际高端酒店品牌，我们以别具一格的设计，专业、高效、灵活和彰显人性化的服务理念助您平衡工作与生活，激发您的灵感，让您于这片创新之地遇见商旅新时代。

From Panlong City of three thousand years history to the prosperous capital of nine provinces, Wuhan exudes infinite charm with its nature full of rich history and vitality. Wuhan East Lake New Technology Development Zone, the “China Optics Valley” focusing on the world's vision, has created dazzling innovative light to the city.

Crowne Plaza Wuhan Optical Valley is located in the Financial Center of Optics Valley. As an international upscale hotel brand, we help you balance work and life with our unique design as well as professional, efficient, flexible and humanized service concept, to spark your inspiration, and let you meet the new era of business travel in this innovative place.

地理位置

Geographic Location

武汉光谷皇冠假日酒店坐落在高新大道与光谷三路交汇处，毗邻光谷生物城。酒店紧邻地铁11号线，与武汉天河国际机场直线距离约40公里，与武汉火车站直线距离约14公里。方便您前往周边的K11购物广场、光谷步行街，畅享休闲购物和品味特色美食的乐趣，或轻松游览东湖生态风景区以及黄鹤楼等名胜，领略江城神韵。

Crowne Plaza Wuhan Optical Valley is located at the intersection of Gaoxin Avenue and Optical Valley 3rd Road, adjacent to Biolake. The hotel is adjacent to Metro Line 11, 40km from Wuhan Tianhe International Airport and 14km from Wuhan railway station.

The hotel's superior geographical location and abundance of choices for traffic make it convenient for you to go to the surrounding business districts like K11 shopping plaza and commercial pedestrian precinct of Optics Valley, to enjoy leisure shopping and taste featured food or easily visit the East Lake Ecological Scenic Area and Yellow Crane Tower and other scenic spots to experience the charm of Jiangcheng.



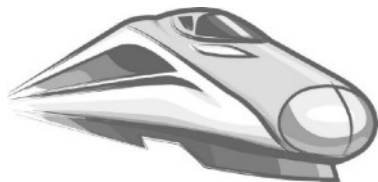
便利交通

Convenient Transportation



武汉天河国际机场
IATA代码: WUH
酒店直线距离约40公里

Wuhan Tianhe International Airport
IATA Code: WUH
40km to hotel



武汉站 酒店直线距离约14公里
武昌站 酒店直线距离约18公里
汉口站 酒店直线距离约35公里

Wuhan Station 14km to Hotel
Wuchang Station 18km to Hotel
Hankou Station 35km to Hotel



沪渝高速 福银高速 关豹高速
可方便到达武汉全区及全国各省份

Shanghai Chongqing Expressway
Fuzhou Yinchuan Expressway
Guan Bao Expressway
convenient to reach all provinces of
Wuhan and China



光谷生物园
地铁(A出口)
步行2分钟可方便到达武汉全区

Biolake
Subway station
(Exit A)
2 mins walk to hotel

酒店客房 Hotel Rooms



武汉光谷皇冠假日酒店龙脊梯田的建筑造型动感流畅，兼具传统与现代之美，屹立在光谷分外耀眼。酒店拥有311间新一代摩登商旅客房及套房，巧用材质与色彩搭配，打造出灵活舒心的私密空间，超大落地窗和高层视野可将光谷尽收眼底。休闲、工作和睡眠区设计灵巧妥帖，在此快速高效地投入工作或享受惬意的休闲时光，皆能随心所欲。

Crowne Plaza Wuhan Optical Valley stands like Venus in central Optics Valley as its Dragon Ridge Terrace has a dynamic and fluent architectural style blending both traditional and modern beauty. The hotel has 311 rooms and suites in total, tailor-made for new generation of modern business travel. It creates a flexible and comfortable private space by combining materials and colors as well as the panoramic view of the Optics Valley brought by high-rise and Large French windows. The entertaining, working and sleeping areas are well designed, where you may have a productive stay freely for your work or leisure time.

酒店客房

Hotel Rooms

房型 Room	房间数 Number	面积 (平方米) Area (m²)
高级大床房 Deluxe King Bed	56	32-39
高级双床房 Deluxe Twin Bed	20	41
无障碍双床房 Deluxe Twin Mobil Accessible	2	41
摩登商旅大床房 Superior Room King Bed	63	40-41
摩登商旅双床房 Superior Room Twin Bed	66	40-41
豪华大床房 Premier Room King Bed	41	41-53
豪华双床房 Premier Room Twin Bed	33	42-58
套房 Deluxe Suite	13	57-64
单卧套房 Superior Suite	13	67-73
单卧豪华套房 Premier Suite	3	80-100
行政套房 Executive Suite	1	171
总计 Total	311	



酒店客房 Hotel Rooms



酒店客房 Hotel Rooms


CROWNE PLAZA®
HOTELS & RESORTS
皇冠假日酒店及度假村
IHG® 旗下酒店



酒店餐厅

Hotel Restaurants

品臻全日餐厅 Zen Café

为客人提供早餐/自助餐服务，提供中、西式多种的自助品种供客人选择，另外还有更多热菜可即点即做。在提供多样的选择的同时，美味可口的味道也是很多客人对酒店的早餐赞不绝口的原因之一。

针对商务人士行程节奏快，注重效率的特质，酒店除了提供打包服务外，还推出了“早餐同步退房”的服务，客人可以在享用美味早餐的同时请酒店服务员同步办理退房手续，免去了排队等候退房的时间，使您的旅程更轻松更高效。

Zen Café provides breakfast/buffet service in which there are various Chinese and Western style self-service varieties as well as instant catering hot dishes for guests. The delicious taste is one of the reasons many guests praise the breakfast of the hotel apart from the variety of choices.

Regarding the fast-pace trip and efficiency oriented characteristics of business people, the hotel provides a take-away service and specially "breakfast check-out" service. Guests can enjoy delicious breakfast and ask hotel attendant to help with check-out formalities synchronously, which means waiting-free for check-out that makes your journey easier and more efficient



彩丰楼中餐厅 Cai Feng Lou

彩丰楼是洲际酒店集团倾心打造的高端餐饮 中餐厅品牌，其灵感源自中国千年之久的爱鸟情怀，以丰富色彩和低调、内敛的餐厅设计风格彰显了现代都市感，同时洋溢着对中国传统的温暖怀旧之情。

酒店除了以原料鲜活、刀工精细、注重本味、火工讲究、富于变化的淮扬菜佳肴为主打，同样也精心制作正宗的湖北武汉及周边本地特色菜式，可以充分满足宾客对于高水准商务宴请的需求。

Caifenglou is an upscale Chinese restaurant brand forged by IHG, inspired Chinese people's love for birds with thousands years history. It manifests the sense of modern city and warm nostalgia for Chinese tradition with its rich-colored, elegant and implicit design.

In addition to Huaiyang cuisine featured by fresh ingredients, dedicated knife work, emphasis on original taste, exquisite pyrotechnics and rich variety, the hotel also meticulously produces authentic local specialties and dishes in Wuhan and surrounding areas, which can fully meet the demands of guests for high-standard business banquets.



酒店餐厅

Hotel Restaurants



CROWNE PLAZA®

HOTELS & RESORTS

皇冠假日酒店及度假村

IHG® 旗下酒店

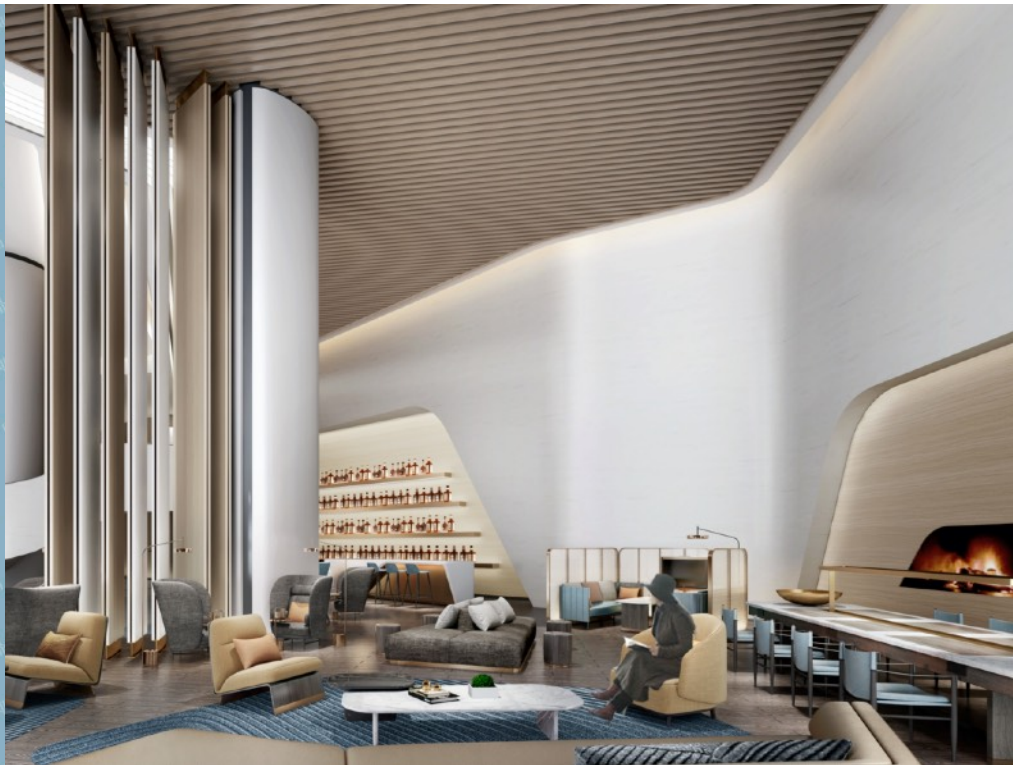
蔚吧 V Bar

蔚吧主打网红经典的下午茶套餐，是一个集宾客休闲和商务洽谈的幽静之所。丰富多样的国际美食小吃和当地特色小食，中式和英式下午茶点套餐，搭配咖啡和茶可以免费续杯。

调酒师现场花式调酒表演，外籍乐队歌手现场表演，在享受美食的时刻，可以尽情徜徉在音乐的旋律中。

V bar provides Internet-celebrity-style classic afternoon tea set as the flagship product. It is the peaceful and secluded place for guests' leisure and business negotiation. A variety of both international and local snacks, Chinese and British afternoon tea set, working with free refill coffee and tea will make you day another.

Bartender's live fancy mixing performance along with the singing of foreign bands, would bring you wonderful experience in tasting delicious food and music played by hands of God.



会议活动 Events

武汉光谷皇冠假日酒店拥有2000平方米多功能会议场地，共4间会议室，其中1100平方米无柱大宴会厅挑高9米能轻松容纳800人同席。所有场地均可灵活分隔，并配有现代化视听设备，满足各类会务活动的高品质需求。

无论是董事会议、产品发布会、公司年会、鸡尾酒派对或是盛大的婚礼庆典，我们的皇冠会务总监及团队都将为您度身定制富有新意的方案及个性化场地布置，并全程悉心服务，激发与会者的热情和灵感。主厨们精心呈现的特色宴会菜单、主题自助餐或是优雅的茶歇，也将助力盛事顺利圆满。

Crowne Plaza Wuhan Optical Valley has 2000m² of multi-functional conference space, a total number of 4 conference rooms, including 1100m² pillar less banquet hall of 9 meters height, which can easily accommodate 800 people. All venues can be flexibly separated and equipped with modern audio-visual equipment to meet the high-quality needs of various conference activities.

Whether it's a board meeting, product launch, company annual meeting, cocktail party or grand wedding ceremony, our Crowne Meeting Director and events team will customize innovative solutions and personalized venue layout for you, together with providing full service to stimulate the enthusiasm and inspiration of the participants. The special banquet menu, theme buffet and elegant tea break presented by chefs will also help to complete the event.



皇冠会务总监 Crowne Meeting Director

我们旨在帮助您成功完美地举办每个活动。从两小时的反馈服务到每日汇报，我们的皇冠会务总监事无巨细地帮您打理每一个环节，让您纵览全局，高瞻远瞩。

We aim to help you organize every event perfectly and successfully. From the two-hour feedback service to the daily report, our Crowne Meeting Director will help you to take care of every link in detail, so that you can have a broad view of the overall situation.



皇冠宴会厅 Crowne Conference Hall

1100平方米、层高9米的无柱式大宴会厅可分隔为三个小厅，满足您不同规模的活动需要。皇冠宴会厅拥有舞台灯光和自带视听系统，优雅而现代的装饰风格让您轻松实现活动的各种创意。

The pillarless banquet hall with an area of 1100m² and a height of 9 meters can be divided into three small halls to meet the needs of different scale activities. Crowne conference hall has stage lighting and its own audio-visual system, elegant and modern decoration style, so that you can easily achieve a variety of creative activities.



多功能会议室 Multi-function Meeting Rooms

分布在两层的7个中小型会议室，满足您单独会议及/或分组讨论的需要。所有会议室均配备了先进的视听系统、独立照明系统、液晶投影仪、无线宽带网络和齐全的会议用品。

There are 7 small and medium-sized meeting rooms on two floors to meet your needs of individual meeting and /or group discussion. All meeting rooms are equipped with advanced audio-visual system, independent lighting system, LCD projector, wireless broadband network and a full set of conference supplies.



会议室容量表

Conference Room Capacity Table



CROWNE PLAZA®

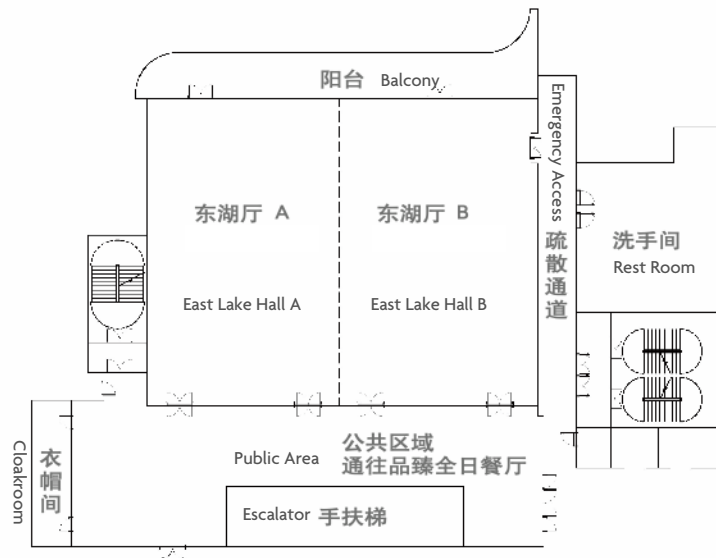
HOTELS & RESORTS

皇冠假日酒店及度假村

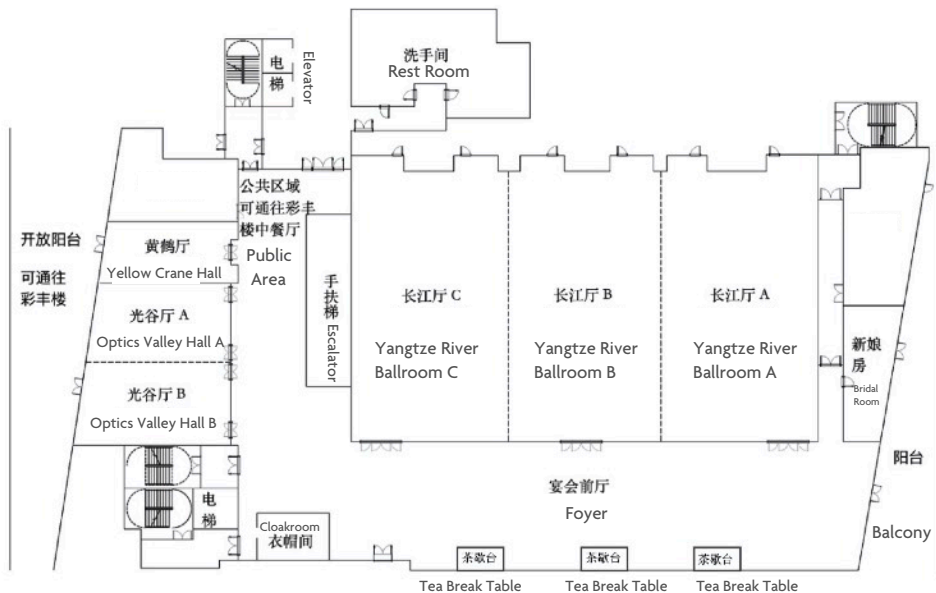
IHG® 旗下酒店

会议室 Conference Room s	楼层 Floor	长x宽x高(米) Length x width x height (m)	面积 (平方米) Area (m ²)	剧院式 Theatre	课桌式 Classroom	圆桌式 Rounds	鸡尾酒 Cocktail	U型 U Square	回型 HollowSquare	董事会议Board meeting
长江宴会厅 Yangtze River Ballroom	3	40x25x9	1100	1000	680	770	1000	/	/	/
长江宴会厅 A+B/B+C Yangtze River Ballroom A+B/B+C	3	29.2x25x9	730	680	450	450	680	110	160	/
长江宴会厅 A/B/C Yangtze River Ballroom A/B/C	3	25x14.6x9	365	320	200	220	320	90	120	/
东湖厅 East Lake Hall	2	27x21.5x3.8	580	500	300	360	500	100	130	100
东湖厅 A/B East Lake Hall A/B	2	21.5x13.5x3.8	290	250	150	180	250	80	160	/
光谷厅 Optics Valley Hall	3	15.5x15x3.3	230	200	110	140	200	60	100	60
光谷厅 A/B Optics Valley Hall A/B	3	15.5x7.5x3.3	115	100	45	70	100	30	50	30
黄鹤厅 Yellow Crane Hall	3	10x5.5x3.3	55	50	27	30	50	21	/	24

会议平面图 Conference Floor Plan



二层会议室平面图 2F Meeting Room Floor Plan



三层会议室平面图 3F Meeting Room Floor Plan

健身中心 Fitness Center

健身房 Gym

酒店的健身房占地185平方米，配备各式采购自国际大牌的健身设备，在保证安全的前提下，提高客人的健身效果。

The gym of the hotel covers an area of 185m², equipped with all kinds of fitness equipment purchased from international brands, to improve the fitness experience of guests on the premise of ensuring safety.



健身中心

Fitness Center

游泳池 Swimming Pool

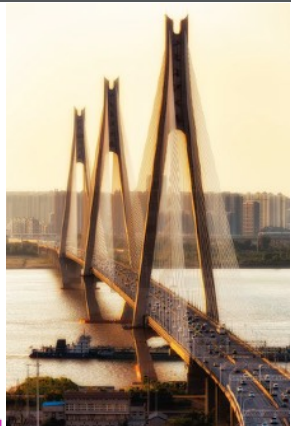
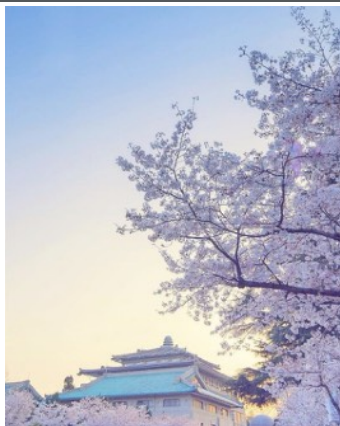
酒店的游泳池140平方米，尺寸为20米乘7米，深水区1.4米，浅水区0.9米；儿童游泳池4平方米，深度0.6米；水温保持26-28摄氏度恒温。

The swimming pool of the hotel is 140m², with the length of 20 meters and width of 7 meters, 1.4 meters in deep water area and 0.9 meters in shallow water area as depth. The children's swimming pool is 4m² with a depth of 0.6 meters; The water temperature is maintained at 26-28 °C.



关于武汉

About Wuhan

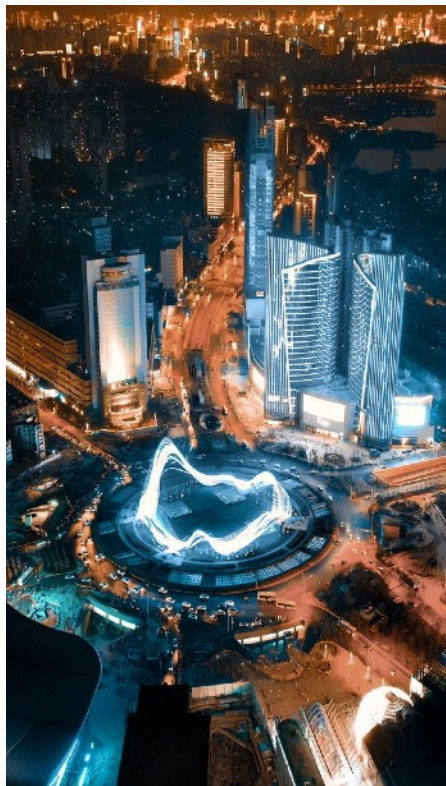


武汉是华中地区最大都市，长江及其最长支流汉水横贯市区，将武汉一分为三，形成了武昌、汉口、汉阳三镇隔江鼎立的格局，唐朝诗人李白在此写下“黄鹤楼中吹玉笛，江城五月落梅花”，因此武汉自古又称“江城”。

Wuhan is the largest city in Central China. The Yangtze River and its longest tributary, the Han River, run through the city. Wuhan is divided into three parts, forming a pattern of “Wuchang, Hankou and Hanyang” towns across the river. Li Bai, the most famous poet of the Tang Dynasty, wrote the verse here - “the Yellow Crane tower blows the Jade Flute, and the river city falls the plum blossom in May”. Therefore, Wuhan has been called “The River City” since ancient times.

关于光谷

About Optics Valley

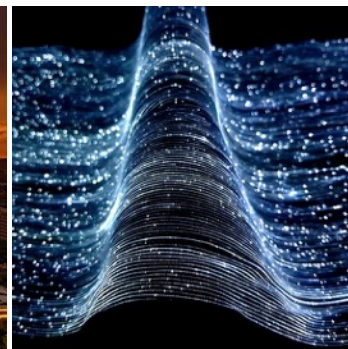


武汉东湖新技术开发区，简称“东湖高新区”，“东湖开发区”，别称“中国光谷”。

光谷已成为全球最大的光纤光缆研制基地、全国最大的光器件研发生产基地、国内最大的激光产业基地。到本世纪中叶，成为具有全球影响力的创新创业中心，全面建成“**世界光谷**”。

Wuhan East Lake New Technology Development Zone, referred to as "East Lake high tech Zone", "East Lake Development Zone", also known as "China Optics Valley".

Optics Valley has become the largest optical fiber & cable research and development base in the world, the largest optical device R & D and production base in China, and the largest laser industry base in China. By the middle of this century, it will become an innovation and entrepreneurship center with global influence and build the "**World Optics Valley**" in an all-round way.



周边娱乐

Peripheral Entertainment



CROWNE PLAZA®

HOTELS & RESORTS

皇冠假日酒店及度假村

IHG® 旗下酒店



湖北省奥体中心
Hubei Olympic Sports Center

湖北省内最大规模、最为现代的综合性体育场馆。建有专业的乒乓球、羽毛球、网球、篮球、排球、体操、武术、游泳、跳水、现代五项、田径、足球等国内一流的训练竞赛场馆和设施。

It is the largest and most modern comprehensive stadium in Hubei Province. There are professional training and competition venues and facilities for table tennis, badminton, tennis, basketball, volleyball, gymnastics, martial arts, swimming, diving, modern pentathlon, track and field, football, etc

酒店直线距离约3.2公里
3.2km to hotel



武汉K11购物艺术中心
Wuhan K11 shopping Art Center

第一家博物馆零售店，把艺术、人文、自然三大核心元素融合，使艺术和商业以有趣和启迪的方式彼此融合，创造充满活力和有如舞台般的购物体验。还设置了关于体验、生活方式的产品以及其他的新型业态。

The first museum retail store integrates the three core elements of art, humanity and nature to make art and Commerce integrate with each other in an interesting and enlightening way, creating a dynamic and stage like shopping experience. It also set up products about experience and lifestyle as well as other new formats.

酒店直线距离约8公里
8km to hotel



世界城光谷步行街
World City - Valley of Light Pedestrian Street

高档商业步行街区以及高档住宅“五位一体”的大型城市中心建筑群。是武汉乃至华中地区当前最大的商业地产项目。总长1350米的街道上设置出五大风情、十大广场，逛世界城就是在欣赏“万国建筑博览”。

Upscale commercial pedestrian blocks and high-grade residential “five in one” large urban center complex. It is the largest commercial real estate project in Wuhan and even central China. Five customs and ten squares are set up on the 1350 meter long street. Visiting the world city is to enjoy the “World Architecture Expo”.

酒店直线距离约10公里
10km to hotel

周边娱乐 Peripheral Entertainment



CROWN PLAZA®

HOTELS & RESORTS

皇冠假日酒店及度假村

IHG® 旗下酒店

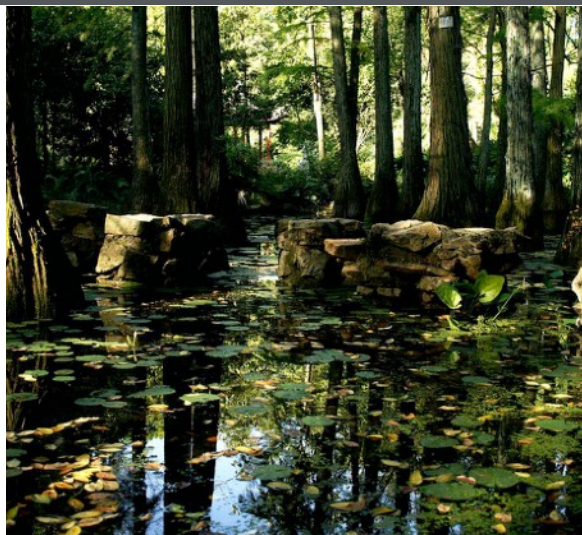


东湖生态风景区
East Lake Ecological Scenic Spot

东湖是我国最大的城中湖。东湖的花木品种繁多，一年四季不断开放，其中尤以春兰、夏荷、秋桂和冬梅最为著名。东湖周边有听涛、磨山、落雁、吹笛四大景区，景区各具特色，移步换景。

East Lake is the largest city lake in China. There are many kinds of flowers and trees in East Lake, which bloom all the year round, especially spring cymbidium, Summer Lotus, Autumn osmanthus and wintersweet. Around the East Lake, there are four scenic spots: Tingtao, Moshan, Luoyan and Piper, each with its own characteristics.

酒店直线距离约13公里
13km to hotel



武汉植物园
Wuhan Botanical Garden

集科学研究、物种保存和科普教育为一体的综合性科研机构，是中国三大核心科学植物园之一。现收集保育植物资源12000余种，共17个特色专类园。

A comprehensive scientific research institution integrating scientific research, species conservation and popular science education, it is one of the three core science botanical gardens in China. More than 12000 species of conservation plant resources are collected, with a total of 17 special gardens.

酒店直线距离约13公里
13km to hotel



武汉大学
Wuhan University

坐落在武昌珞珈山麓。校园坐拥珞珈山，环绕东湖水，地势蜿蜒起伏。武大的樱花闻名全国，每年3月至4月初，武大酷似花的海洋，成千上万游客慕名而至。

It is located at the foot of Luojia mountain in Wuchang. The campus is surrounded by Luojia mountain and the East Lake. The terrain is winding and undulating. The cherry blossoms of Wuhan University are famous all over the country. From March to early April every year, Wuhan University is like a sea of flowers, attracting thousands of tourists.

酒店直线距离约15公里
15km to hotel

周边景点

Tourist Attractions



CROWNE PLAZA®

HOTELS & RESORTS

皇冠假日酒店及度假村

IHG® 旗下酒店



黄鹤楼
Yellow Crane Tower

位于中武汉市武昌蛇山上，临江而立，登上楼顶可俯瞰三镇两江全景。古往今来，无数名人先后登临黄鹤楼，留下了一篇篇脍炙人口的传世之作，使黄鹤楼蜚声中外。

Located in the Snake Mountain of Wuchang, central Wuhan City, it stands by the river. You can have a panoramic view of three towns and two rivers from the top of the building. Throughout the ages, countless celebrities have visited the Yellow Crane Tower, leaving behind many well-known works, which make the Yellow Crane Tower famous at home and abroad.

酒店直线距离约20公里
20km to hotel



湖北省博物馆
Hubei Provincial Museum

坐落于武昌东湖之滨，它有世界上最庞大的青铜乐器曾侯乙编钟、中国冷兵器时代的翘楚之作越王勾践剑、地质年代早于北京人的郧县人头骨化石、元代青花四爱图梅瓶等。

Located on the East Lake of Wuchang, it has the largest bronze instrument in the world, Zeng Houyi chime, the leading Chinese cold weapons age, the king of Yue Gou Jian Jian, Yunxian skull fossil, and the plum bottle of four love pictures of blue and white flowers in Yuan Dynasty, which was earlier than that of Beijing.

酒店直线距离约20公里
20km to hotel



楚河汉街
Chu River Han Street

汉街的炫丽夜景与楚河景观带、四座跨河大桥交相辉映，是武汉夜游的首选地之一。将极具时尚元素的现代建筑和欧式建筑穿插 在民国风格建筑中，实现传统与现代的完美融合。

The gorgeous night scene of Han street is one of the first choice places for night tour in Wuhan. Modern architecture with fashionable elements and European style architecture are interspersed in the architecture of the Republic of China to realize the perfect integration of tradition and modern.

酒店直线距离约20公里
20km to hotel



CROWNE PLAZA®

HOTELS & RESORTS

皇冠假日酒店及度假村

IHG® 旗下酒店

Thank you

