

长白山吉视传媒铂尔曼度假酒店

PULLMAN CHANGBAISHAN RESORT



CHANGBAISHAN RESORT
长白山吉视传媒铂尔曼度假酒店



关于雅高 ABOUT ACCOR

雅高是全球领先的全方位服务酒店集团，通过位于全球110个国家的5,000多家酒店、度假酒店以及住宅，提供独特并充满意义的体验。50多年来雅高持续提供热情好客的服务以及酒店行业的专业知识，旗下拥有39个无以伦比的酒店品牌，全线覆盖从奢华到经济型细分市场。雅高还提供数字解决方案，实现分销最大化，优化酒店运营并增强宾客体验。

ALL - ACCOR LIVE LIMITLESS 雅高心悦界作为日常生活方式的贴心旅伴，为公司及其客户、员工、合作伙伴间的关系赋予了从理性到感性的转变，为生活、工作和娱乐解锁新的可能。除酒店住宿之外，ALL- ACCOR LIVE LIMITLESS 雅高心悦界通过旗下餐饮、夜生活娱乐、康体以及共享办公品牌提供生活、工作以及娱乐的新方式。

雅高深入致力于创造可持续价值，并在回馈地球和社区方面发挥积极作用。PLANET 21 ACTING HERE（21世纪地球）项目倡导行动致力于“积极的待客之道”。

Accor is a world-leading augmented hospitality group offering unique experiences in more than 5000 hotels and residences across 110 destinations. The Group has been acquiring hospitality expertise for more than 50 years, resulting in an unrivaled portfolio of 39 hotel brands, from luxury to economy. The Group also offers digital solutions that maximize distribution, optimize hotel operations and enhance the customer experience.

With ALL - Accor Live Limitless, the new daily lifestyle companion, the relationship between the Group and his clients, members and partners evolves from transactional to emotional, and unlocks the potential to live, work, and play. Beyond accommodation, ALL enables new ways to live, work, and play, by blending food and beverage with nightlife, wellbeing, and co-working.

Accor is deeply committed to sustainable value creation and plays an active role in giving back to planet and community via its Planet 21 - Acting Here program and the Accor Solidarity endowment fund, which gives disadvantaged groups access to employment through professional training.



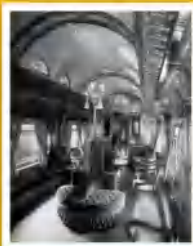
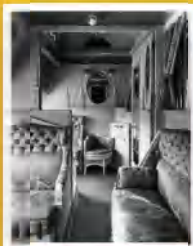
关于铂尔曼

ABOUT PULLMAN

1867

品牌创始人乔治·铂尔曼
创建了Pioneer列车
为乘客提供真正舒适感受

George Pullman
introduces luxury to
train travel, which meant
comfort and safety



1920

秉持时尚旅行的精神
助力达到个人最佳状态

He infuses
fashion and style



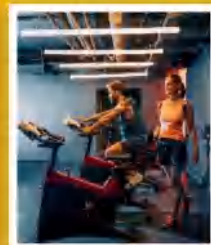
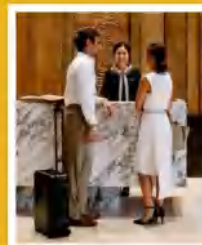
*150 YEARS
of innovation*

*Moving travel
experiences forward*

2007

法国雅高集团在全球
范围重新推出铂尔曼
品牌

Accor opens the 1st Pullman
hotel in Bangkok



2019

中国 吉林省 白山市
长白山吉视传媒铂尔曼度假酒店
运营

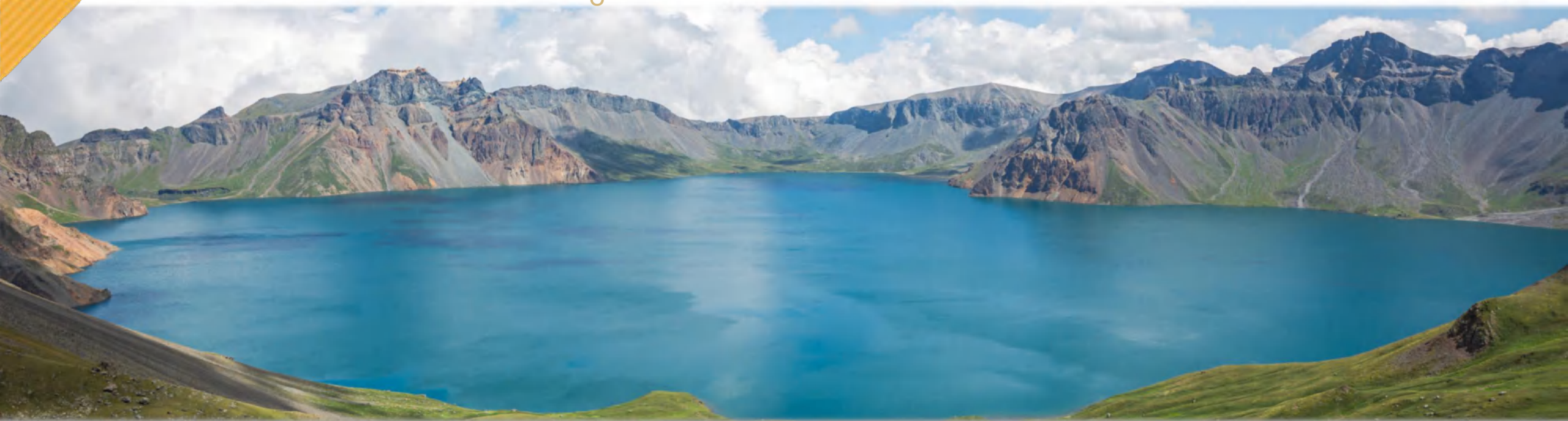
Baishan City, Jilin Province, China
Pullman Changbaishan Resort operation





目的地介绍 - 长白山

Destination Introduction - Changbai Mountain



有关长白山最早的记载见于中国4000多年前的文字中，《山海经》称“不咸山”，北魏称“徒太山”，唐称“太白山”，众所周知长白山是满族的发祥地和满族文化圣山。长白山之名流传着“长白山”源自满语“Golmin šanggiyan Alin”意译“白头山”。自此便拥有了“长相守，到白头”的美好寓意，最为著名的就是“松桦恋”。

The earliest records of Changbaishan can be found in writings more than 4,000 years ago, "Legends of Mountains and Seas" are called "Buxianshan", North Wei are called "Tutaishan", Tang Dynasty are called "Taibaishan", As we all know, Changbaishan is the birthplace of Manchu and the sacred mountain of Manchu culture. The name of Changbaishan derived from the Manchu "Golmin šanggiyan Alin" transliterating of "Baitoushan". Since then, it has a beautiful moral for "together forever". The most famous is "Songhualian".



交通 TRANSPORTATION



距离高速东岗出口3分钟

3' by car away from the exit of Donggang Expressway



距离长白山西景区集散中心3分钟

3' by car to West Slope Scenic Area Distribution Center of Changbaishan



距离长白山机场15分钟

15' by car to Changbaishan Airport



距离长春龙嘉机场4小时

4h by car to ChangChun Longjia International Airport



距离松江河火车站10分钟

10' by car to Songjianghe Railway Station



距离松江河客运站10分钟

10' by car to Songjianghe Passenger Station



专属接送机服务

Exclusive hotel and Changbaishan airport pick-up service

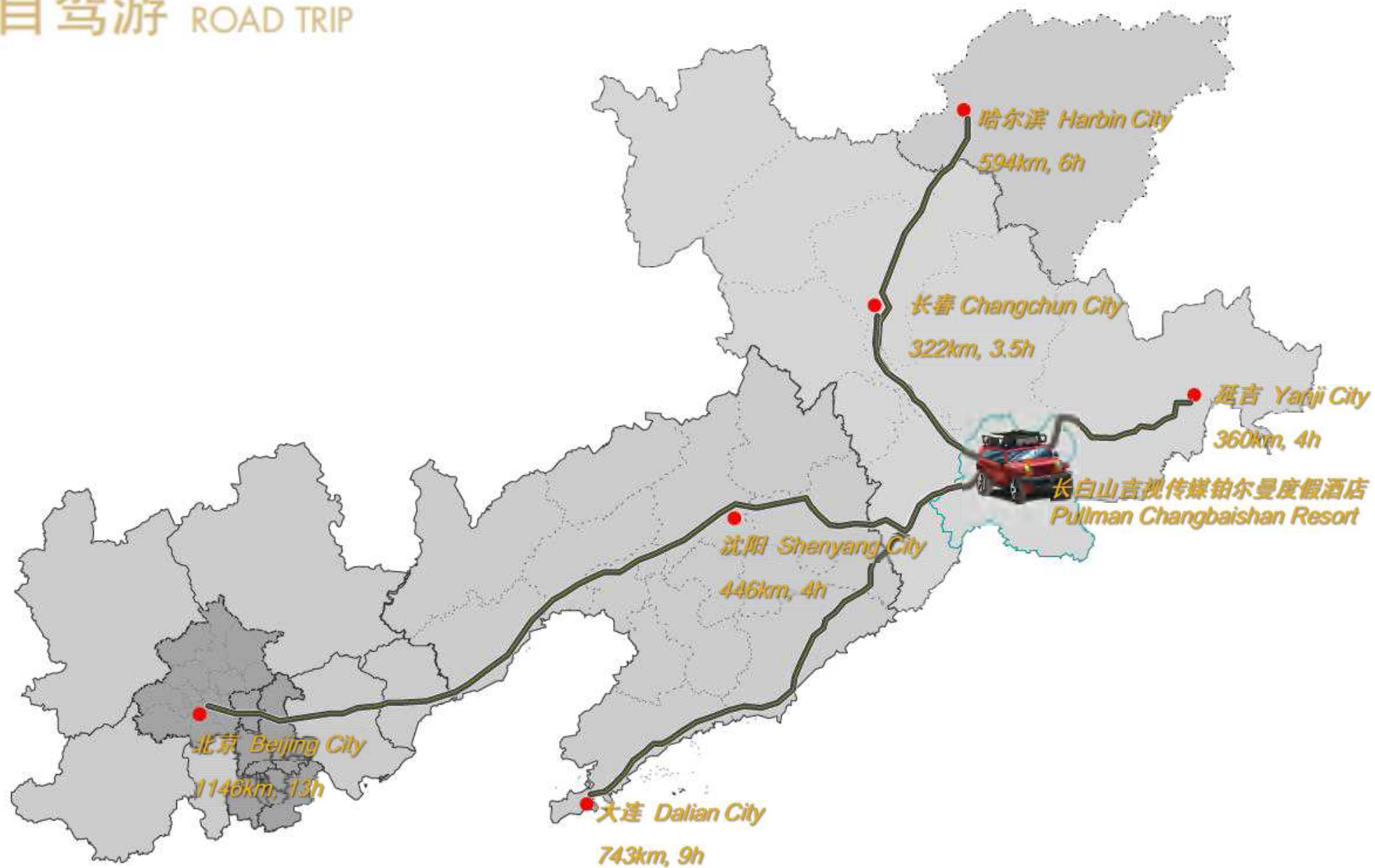


提供室内&室外停车场

Indoor & Outdoor parking area



自驾游 ROAD TRIP



长白山吉视传媒铂尔曼度假酒店

PULLMAN CHANGBAISHAN RESORT



吉林省, 长白山
Jilin Province Changbai Mountain



长白山天池脚下森林度假酒店

Forest Resort Hotel at the foot of the Tianchi in Changbai Mountain



长白山吉视传媒铂尔曼度假酒店 PULLMAN CHANGBAISHAN RESORT



长白山吉视传媒铂尔曼度假酒店坐落在长白山天池脚下，酒店距离长白山西景区集散中心、抚长高速东岗出口仅需车程3分钟，距离长白山机场15分钟车程，酒店坐拥300间舒适景观客房，搭配四季居停装饰设计理念，使用面积42-176m²。4款特色味道餐厅带来味蕾纯甄体验，拥有1000m²的宴会及专业会议场地、独栋健身中心、室内恒温泳池、鹿园等，为您提供释放潜能所需的一切，尽享长白山天池脚下森林度假酒店探索之旅，开启旅程的无限可能。

Pullman Changbaishan Resort is located at the foot of the Tianchi in Changbai Mountain, The hotel is only 3 minutes' drive away from West Slope Scenic Area of Changbaishan Distribution Center and Donggang Exit of Fuchang high-speed outlet, 15 minutes' drive away from Changbaishan Airport. Hotel has 300 comfortable landscape rooms, with the four seasons design concept of residential decoration, the use area of 42-176m². 4 restaurants offering the highest quality food and beverage, and executing impeccable standards of hospitality. 1000m² banquet and professional meeting space, single building fitness center, indoor heated swimming pool, deer park, etc. To provide you with everything you need to unlock your potential, and enjoy the infinite possibilities of exploring the forest resort at the foot of Tianchi in Changbai Mountain.



房型 ROOM CATEGORY



房型名称 ROOM TYPE	高级林景大床房 SUPERIOR ROOM	高级林景双床房 SUPERIOR ROOM	豪华山景大床房 DELUXE ROOM	豪华山景双床房 DELUXE ROOM	豪华行政大床房 EXECUTIVE ROOM	豪华行政双床房 EXECUTIVE ROOM	铂尔曼套房 PULLMAN SUITE	总统套房 PRESIDENTIAL SUITE
面积 AREA	42	42	45	45	45	45	85 - 95	218
数量 AMOUNT	53	60	62	65	38	4	17	1



特色房型 FEATURED ROOM CATEGORY



高级林景双床房
SUPERIOR ROOM

高级林景大床房
SUPERIOR ROOM





特色房型 FEATURED ROOM CATEGORY



85 - 95m²

四季主题元素装饰
Four Seasons Elements Decoration

铂尔曼套房
PULLMAN SUITE





设施及备品 FACILITY & AMENITY



户外开放式观景阳台
步入式衣帽间
C.O.Bigelow洗护套
独立卫生间 & 干湿分离
科勒卫浴 & 深泡浴缸
金可儿床垫 & 铂尔曼睡枕



Outdoor Balcony
Walk-in Closet
Toiletries Brand:C.O.Bigelow
Private Bathroom
Bathroom Brand: Kohler
Kingkoil & Pullman Pillow

潮食隨享

HAPPENING F&B





纬度全日制餐厅 HORIZON ALL DAY DINNING RESTAURANT



餐厅位于酒店二楼并设有户外观景花园
采用长白山独有的木质雕刻现代设计风格
打造北纬41° 国际零点餐食

营业时间: 6:30 - 22:30

早餐: 6:30—10:30

坐席数 : 130

Horizon All Day Dinning Restaurant is on the 2F with a romantic garden outside
Modernism design style uses the unique wood of Changbai Mountain
Customized a la carte international meals at 41° N

Operation hours: 6:30 - 22:30

Breakfast: 6:30—10:30

Number of seats: 130



岳桦中餐厅 YUEHUA CHINESE RESTAURANT



餐厅位于酒店三楼并设有宽敞户外露台
以长白山特有植物命名八间舒适私密包房
满族典雅装饰风格
烹饪地道东北菜及粤菜

营业时间: 11:30-14:00 & 17:30-21:00

坐席数 : 164



Yuehua Chinese Restaurant is on the 3F with an outdoor balcony outside

8 private room is named by Endemic plant of Changbai Mountain

Manchu's elegant decoration style

Authentic flavors of Northeastern Food and Cantonese Food

Operation hours: 11:30-14:00 & 17:30-21:00

Number of seats: 164



松江味道特色餐厅 SONGJIANG TASTE SPECIALTY RESTAURANT



餐厅位于酒店二楼
浓郁朝鲜族风情装饰
朝鲜族风味特色泥炉烤肉

营业时间: 11:30-14:00 & 17:30-21:00

坐席数 : 56



Songjiang Taste specialty Restaurant is on the 2F
Korean style decoration
Delicious Korean barbecue

Operation hours: 11:30-14:00 & 17:30-21:00

Number of seats: 56



冰凌吧 ZERO MOMENT



冰凌吧采光充足且环境优雅
外设中庭苑梅花鹿观景
本地特色茶饮、创意鸡尾酒及精选法式甜品

营业时间: 10:00 - 22:00

坐席数 : 84



Adequate natural lighting, comfortable and elegant resting environment

The lovely sika deer in the courtyard

Offer the local tea, creative cocktails and French-style patisseries

Operation hours: 10:00 - 22:00

Number of seats: 84

会议享趣

MEET & ENJOY





会议享趣 MEET & PLAY

MEET
PLAY



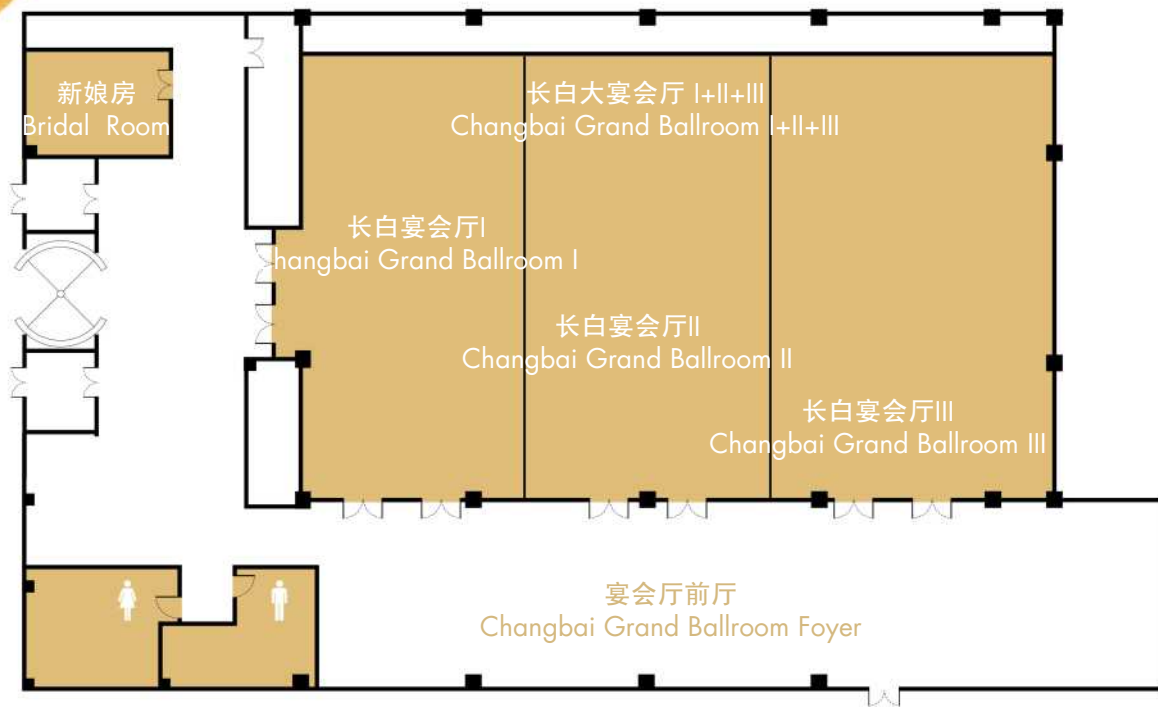
700m²无柱式大宴会厅, 300m²宽敞宴会前厅
10米挑高天花设计, 精美水晶灯饰环绕
4间不同大小的多功能厅
先进P2.5 (9m*7m) LED液晶高清显示屏
同声传译专业音响、字幕提示器及多媒体专业保障
宴会区域特设专属进出车辆通道
独立宴会入口和接待区
专业会务团队和厨师团队



700m² pillarless grand ballroom, 300m² spacious banquet hall
10 meters high ceiling design, exquisite crystal lighting around
4 multi-purpose hall of different sizes
Advanced P2.5 (9m * 7m) LED LCD HD display
Professional audio system for simultaneous interpretation, subtitle
prompter and multimedia professional support
Exclusive vehicular channel
Separate banquet entrance and reception area
Professional meeting team and chef team

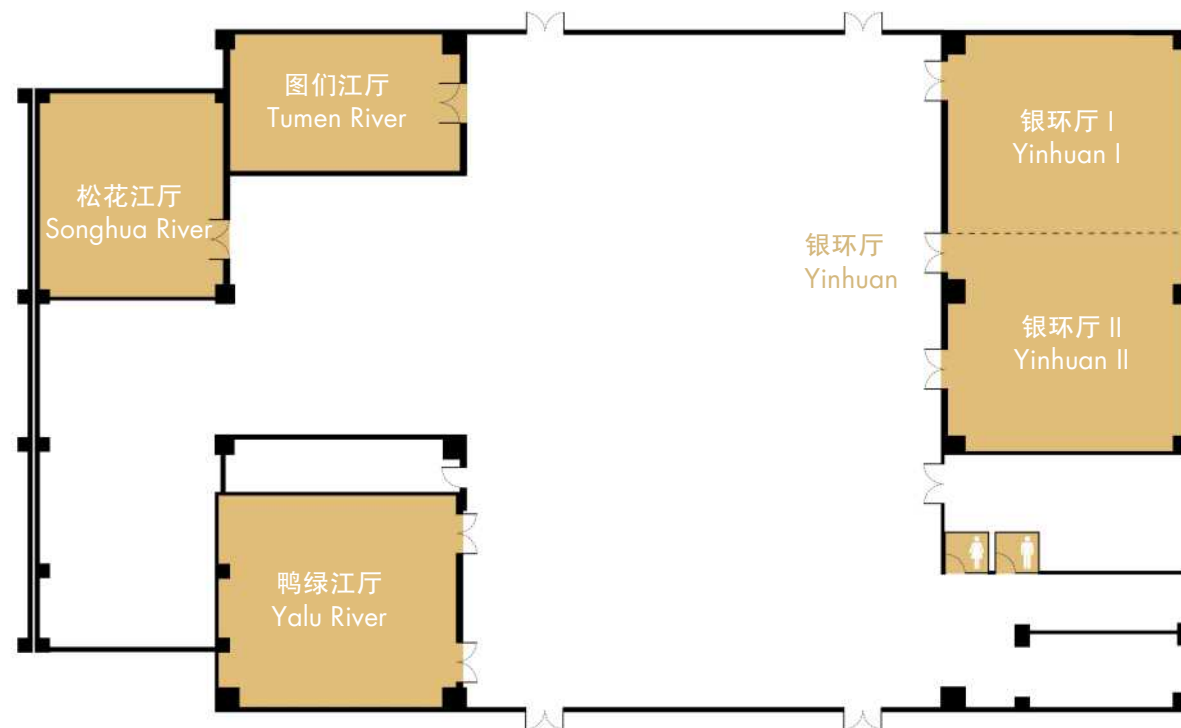


宴会厅及多功能厅平面图 FUNCTION ROOM FLOOR PLAN AND CAPACITIES



A区/楼层二 LEVEL 2

B区/楼层三 LEVEL 3



随心运动、健康养身

POWER FITNESS





独栋健身中心 - C栋 SINGLE BUILDING FITNESS CENTER - C#



游泳池 Swimming Pool

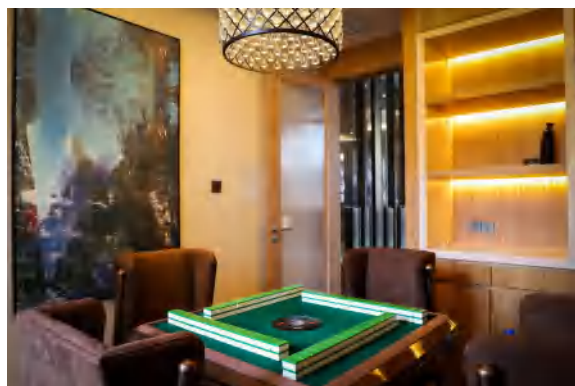
健身中心 Fit Lounge

瑜伽室 Yoga Room

儿童俱乐部 Kids Club



独栋健身中心 - C栋 SINGLE BUILDING FITNESS CENTER - C#



台球室 Billiards Room

乒乓球室 Ping Pong Room

麻将室 Majiang Room

桑拿房 Sauna Room



铂尔曼 x 莱美 PULLMAN X LES MILLS

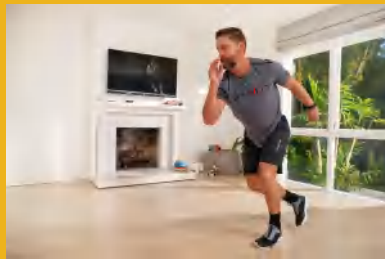
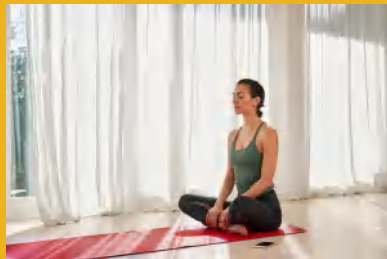
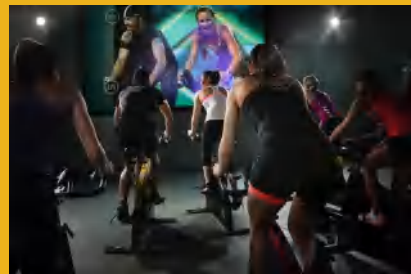


铂尔曼宣布与莱美LES MILLS开展全球合作，携手打造“悦动 越己”全新健康生活方式，邀请宾客随心运动，释放潜能。铂尔曼与莱美的全球合作是铂尔曼全新健康养生项目——铂尔曼健身（Pullman Fit）的关键元素，旨在摒弃一成不变的传统酒店健身房模式，以大胆新颖、促进社交的现代健身理念，为酒店打造别出心裁的健身房环境。酒店将创建崭新面貌的健身空间，结合丰富多元的锻炼设施和先进科技，支持志同道合的伙伴举办社区活动，帮助宾客保持良好状态。

铂尔曼与莱美合作计划的主要内容包括：莱美TV线上健身平台（Les Mills On Demand），莱美虚拟课程（Les Mills Virtual），铂尔曼健身小组（Pullman Fitness Squad）。莱美 LES MILLS 是引领全球潮流的团课健身体系。莱美课程体系现拥有超过14种适合成年人的集体健身课程，及1种适合2-16岁年龄段的青少年系列课程。莱美运动项目由国际顶尖教练员、舞蹈设计师、运动生理学专家合力研究设计，针对不同锻炼者的生理以及心理需求提供不同种类的训练项目设计。可以有效提高锻炼者的力量、耐力、心肺能力及改善身体的协调性、柔韧性、敏捷性，使锻炼者在训练过程中获得更加健康的身心。

Pullman announces global partnership with Les Mills to provide guests a fitness on demand programme. The Pullman X Les Mills partnership is a key element of Pullman's latest approach to health and wellness - Pullman Fit - replacing the stale one-size-fits-all hotel gym environment with a bold, artful, social approach to contemporary fitness. More than a gym, Pullman Fit taps into a new era of training diversity, integrated technology and the support of a like-minded community to help Pullman guests stay on top of their fitness game.

Key elements of Pullman X Les Mills include: Les Mills On Demand & Les Mills TV in China, Les Mills Virtual, Pullman Fitness Squad. Les Mills is the global leader in group fitness, with 20 programs currently available in participating gyms and fitness facilities worldwide. Les Mills programs include the world's first group exercise resistance training workout BODYPUMP™, BODYCOMBAT™ (martial arts), RPM™ (indoor cycling), BOYBALANCE™ (yoga), LES MILLS GRIT™ (30-minute high-intensity interval training) and the revolutionary immersive cycle experience, THE TRIP™. Each workout is refreshed and updated with new choreography and music every three months.



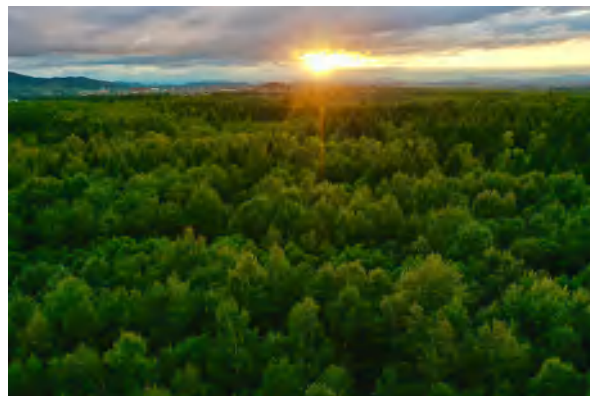
配套服务

SUPPORTING SERVICE





配套服务 SUPPORTING SERVICE



慢跑道 Jogging

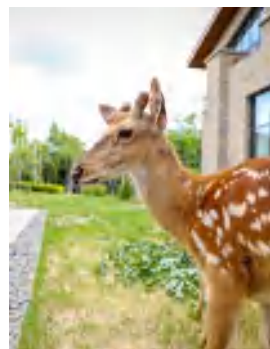
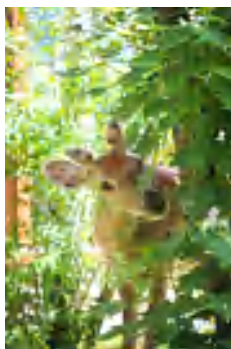
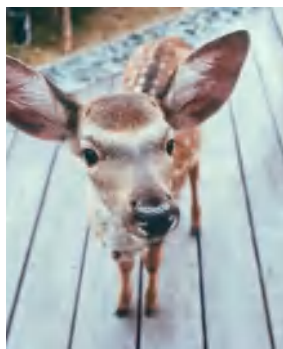
山地自行车 Mountain Biking

花田 Flowers

森林 Forest



中庭苑 THE HUB



梅花鹿Sika deer - 大壮 Dazhuang

梅花鹿Sika deer - 小可爱Xiaokeai

周边游

SURROUNDING





● 露水河狩猎场

● 长白山弥陀寺

● 三江汇游园

● 长白山太安堂人参产业园

● 森林公园



天池大道

欧亚购物中心

鹿港小镇

● 松花江第一漂流

万达水乐园
万达滑雪场

504国道

● 长白山机场

● 长白山西景区

长白山北景区 ●

鲁能滑雪场

天沐温泉

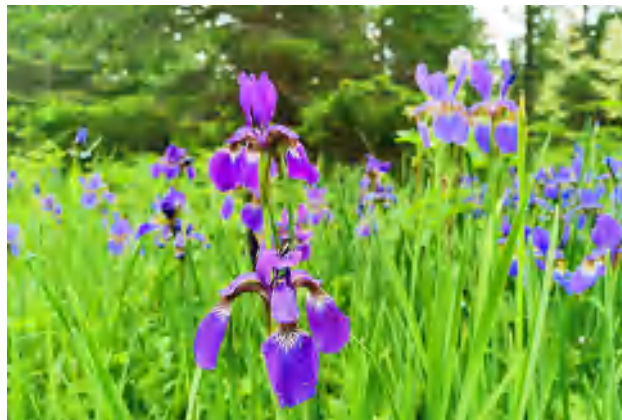
长白山南景区 ●



长白山西景区 West Slope Scenic Area of Changbai Mountain



天池
Tianchi



高山花园
Alpine Garden



锦江大峡谷
Jinjiang Garden Canyon



松桦恋
Songhualian



长白山西景区购票方式 Booking Tickets



通过销售窗口直接购票



通过 www.ichangbaishan.com 网站购票



手机 APP 购票



微信“长白山”公众号购票



支付宝“长白山”生活号购票



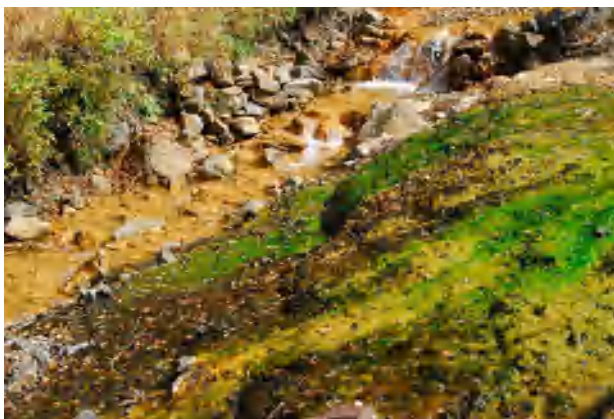
自助售票机购买



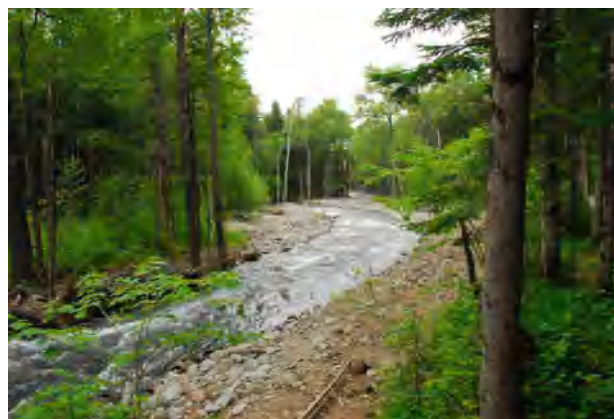
长白山北景区 North Slope Scenic Area of Changbai Mountain



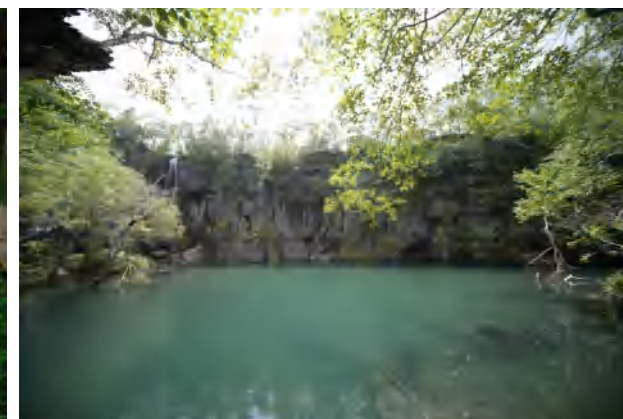
天池
Tianchi



聚龙温泉
Julong Hot Spring



地下森林
Underground Forest



绿渊潭
Lvyuantan



长白山北景区购票方式 Booking Tickets



通过销售窗口直接购票



通过 www.ichangbaishan.com 网站购票



手机 APP 购票



微信“长白山”公众号购票



支付宝“长白山”生活号购票



自助售票机购买



长白山南景区 South Slope Scenic Area of Changbai Mountain



天池
Tianchi



岳桦双瀑
Yuhua Falls



鸭绿江大峡谷
Yalu Garden Canyon



炭化木遗址
Thermo-modified Wood Site



长白山南景区购票方式 Booking Tickets



通过销售窗口直接购票



通过 www.ichangbaishan.com 网站购票



手机 APP 购票



微信“长白山”公众号购票



支付宝“长白山”生活号购票



自助售票机购买



周边游 TRAVEL AROUND



松花江第一漂流
Songhuajiang Floating



长白山太安堂人参产业园
Changbaishan Taiantang Ginseng
Industrial Park



欧亚购物中心
Ouya Shopping Center



汉拿山温泉
Hanna Hot Spring



讷殷古城
The Ancient City of Neyin



露水河森林公园
Forest Park of Lushuihe



特产

SPECIALTY PRODUCTS



人参
Ginseng



鹿茸
Antler Tablet



灵芝
Ganoderma Lucidum



木耳
Agaric



蓝莓
Blueberry



松子
Pine Nut



榛子
Hazelnuts



五味子
Schisandra Chinensis

An aerial photograph of a vast, dense green forest stretching towards distant mountains under a bright blue sky with scattered white clouds. The text is centered over the lower half of the image.

世界里运筹，悠然中帷幄

OUR WORLD IS YOUR PLAYGROUND